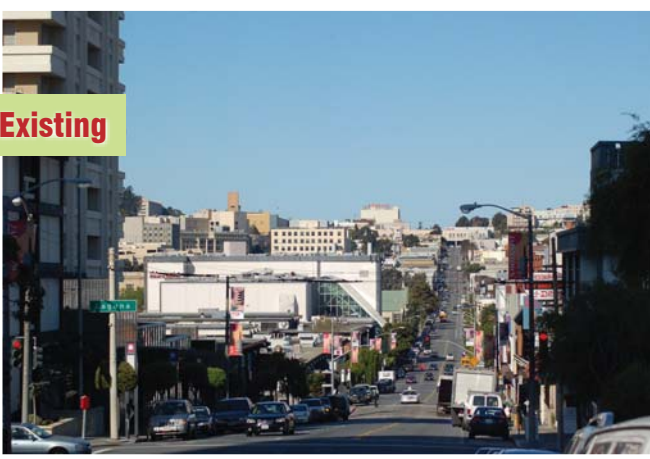


## Existing



Getting around in Japantown on foot can be challenging along Geary Boulevard and Webster Street, which are wide, fast-moving streets that make crossing difficult. The majority of streets in Japantown range from two to four lanes and serve neighborhood traffic. Double-parking along Post Street, infrequent transit service and poor sidewalk conditions are among some of the concerns people have raised.



## Examples From Elsewhere

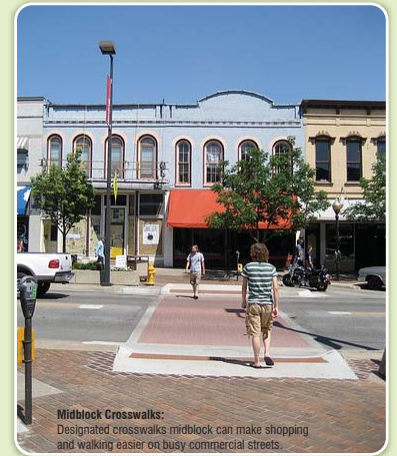
Methods to make streets better places for cars, transit, walkers and bicyclists have proven to improve the quality of neighborhoods elsewhere. A project to develop Bus Rapid Transit (BRT) along Geary Boulevard is underway. This will result in the redesign of Geary, including improvements to intersection and crosswalks, as well as modifications to travel speeds and bus service.



**Bus Rapid Transit:**  
This BRT design increases the pedestrian realm with landscaping.



**Bus Rapid Transit:**  
This example of BRT provides dedicated lanes for transit and a center island for pedestrian safety.



**Midblock Crosswalks:**  
Designated crosswalks midblock can make shopping and walking easier on busy commercial streets.



**Crosswalk Markers:**  
Some districts install bright crosswalk markers to alert drivers of pedestrian traffic and increase safety.



**Pedestrian Signage:**  
Pedestrian controlled traffic signals increase the feeling of safety.



**Crosswalk Treatment:**  
Decorative crosswalks makes drivers more aware of pedestrians and provide character to the street.

# TRANSPORTATION & CIRCULATION

The way people get to and around Japantown affects how they experience the neighborhood. The design and maintenance of streets and sidewalks, the frequency and ease of public transit, the speed of traffic, and parking options directly impact Japantown's residents, workers and visitors daily.

**JAPANTOWN**  
BETTER NEIGHBORHOOD PLAN

SAN FRANCISCO  
PLANNING  
DEPARTMENT

San Francisco Planning Department  
**Better  
Neighborhoods**