

City and County of San Francisco



Juvenile Probation Department

Monthly Report for September 2009

Presented to the Juvenile Probation Commission

October 14th, 2009

William P. Siffermann
Chief Probation Officer

Prepared by Jose Luis Perla
Information Technology Director
(415) 753-7686
jose.perla@sfgov.org

Table of Contents

Section I Summary Reports

Juvenile Hall, Log Cabin Ranch Summary Statistics	1
Probation Services Summary and California Youth Authority Statistics.....	2
Active Cases by Units.....	3

Section II Current Month General Detail

Probation Referrals, Juvenile Admissions And Average Daily Population	4
Juvenile Hall Admissions and Average Daily Population.....	5
Commitments to out-of-home placement	6
Commitments to California Youth Authority	7
Log Cabin Ranch Admissions and Average Daily Population.....	8
Probation Referrals	9
Juvenile Hall And Log Cabin Ranch Incident Report	10
Bay Area Resident Juvenile Hall Comparison	11
Juvenile Hall Admissions	12
Juvenile Hall Detainees by Detention Reason.....	13
Juvenile Hall Average Daily Population by Rated Capacity	14
Juvenile Hall Average Length of Stay	15

Section III Demographics

Juvenile Hall Detainees by Sex and Race/Ethnic Origin.....	16
Juvenile Hall Detainees by Age.....	17
Juvenile Hall Detainees by Age and Sex	18
Juvenile Hall Detainees by Geographic Residence of Youth.....	19
Juvenile Hall Detainees by Race/Ethnic Origin and Sex.....	20

Section IV
Historical Information

2004-2006 Probation Referrals21
2004-2006 Juvenile Hall Admissions22
2004-2006 Juvenile Hall Average Daily Population23



Section I

Summary Reports

Summary Report for the Month of September 2009

Juvenile Hall	<i>August 2008</i>	<i>August 2009</i>	<i>September 2008</i>	<i>September 2009</i>	<i>YTD 2008</i>	<i>YTD 2009</i>
Admissions	170	118	170	117	1455	1219
Average Daily Population	120	108	123	105	122	115
Average Length of Stay (Releases)	21.11	27.24	24.21	43.47	21.99	25.49
Average Length of Stay (In Custody)	63.2	89.96	52.92	75.74	50.22	78.68
Releases	151	111	144	131	1429	1211
Log Cabin Ranch						
Admissions:						
First Time Commitments	1	1	1	0	10	12
Recommitments	0	0	0	0	1	2
<i>Total</i>	1	1	1	0	11	14
Releases:						
Graduated	1	0	1	2	16	9
Escape	0	0	2	1	2	7
Other releases	0	0	2	1	11	15
<i>Total</i>	1	0	5	4	29	31
Average Daily Population	15	14	14	13	16	14
Incident Reports						
Juvenile Hall	61	62	79	46	540	568
Log Cabin Ranch	0	2	6	2	13	19
<i>Total</i>	61	64	85	48	553	587

Summary Report for the Month of September 2009

Probation Services	<i>August 2009</i>	<i>September 2009</i>	<i>Year To Date 2009</i>
Probation Referrals	245	209	2329
Total Petitions including violation of probation	95	88	941
Selected Court Dispositions:			
California Youth Authority	0	0	3
Log Cabin Ranch	1	1	15
Out of Home Placement	8	12	118
Ward Probation	34	40	273
Non-Ward Probation (725a WI)	5	9	40
Informal Probation (654 WI)	12	11	136
Violation of Probation Petitions Filed	9	13	101
California Youth Authority Monthly Count San Francisco County Juvenile Court Cases September 30th, 2009			
Category	Institutions	Parole	
Males			
White	0	1	
Hispanic	0	4	
African American	5	6	
Asian	0	0	
Native American	0	0	
Filipino	0	0	
Pacific Islander	1	0	
Other	0	0	
Total	6	11	
Females			
White	0	0	
Hispanic	0	1	
African American	1	0	
Asian	0	0	
Native American	0	0	
Filipino	0	0	
Pacific Islander	0	0	
Other	0	0	
Total	1	1	
Grand Total	7	12	

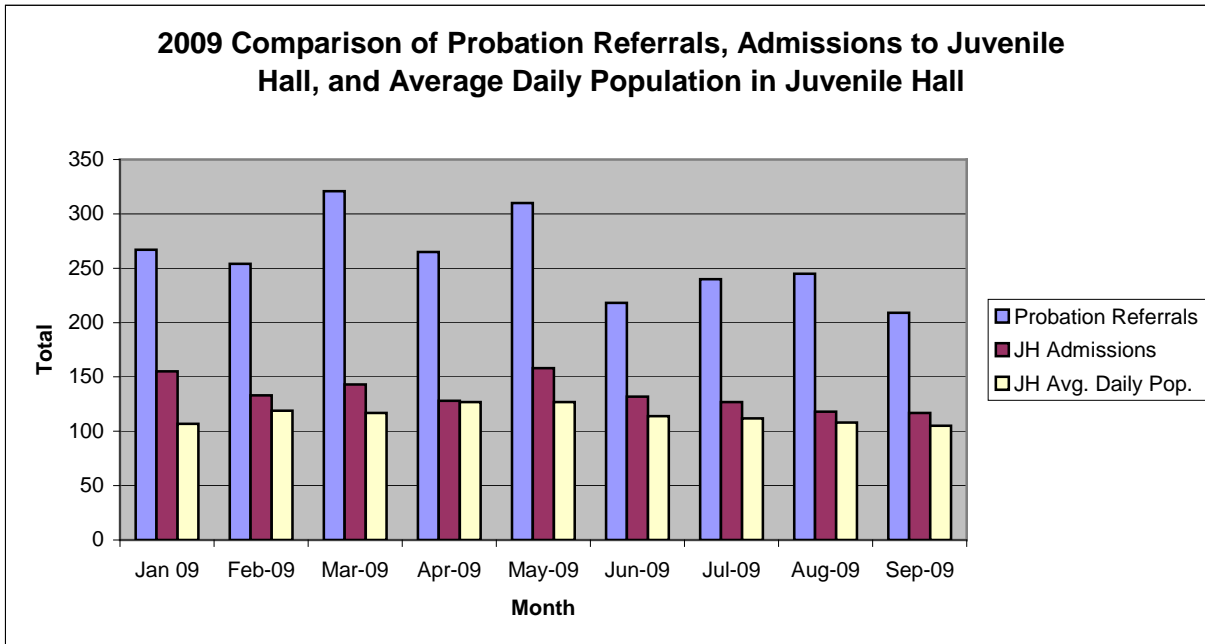
Summary Report for the Month of September 2009

Probation Services			
Active Cases by Units	August 2009	September 2009	September Average # Youth by PO
CARC	131	121	121
Intake Green (Custody Screening Investigation)	224	134	16
Intake Gold (Probation Services 1)	141	226	32
Probation Services 2	231	232	23
Probation Services 3	212	212	21
Probation Services 4	204	207	25
Special Services	69	65	16
<i>Total</i>	1,212	1,197	36
Total Active Intake Cases	544	526	
Total Probation/Supervision Cases	668	671	

Section II
Current Month
General Detail

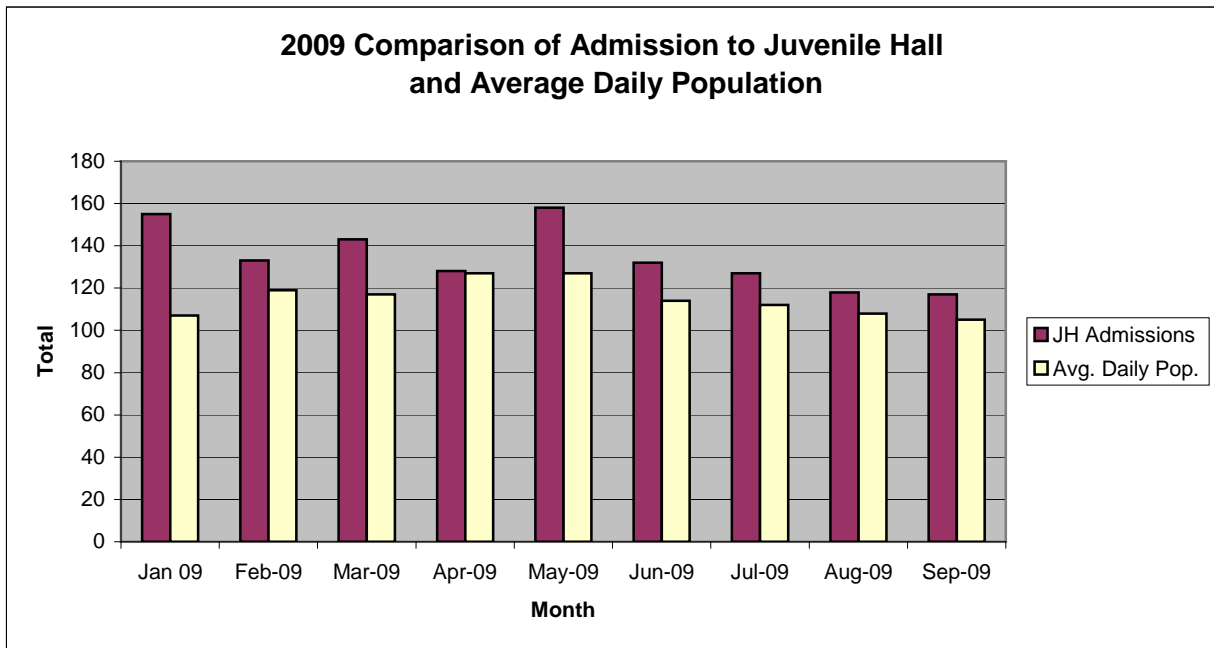
San Francisco Juvenile Probation Department

	Jan 09	Feb-09	Mar-09	Apr-09	May-09	Jun-09	Jul-09	Aug-09	Sep-09	Oct-09	Nov-09	Dec-09
Probation Referrals	267	254	321	265	310	218	240	245	209			
JH Admissions	155	133	143	128	158	132	127	118	117			
JH Avg. Daily Pop.	107	119	117	127	127	114	112	108	105			



San Francisco Juvenile Probation Department

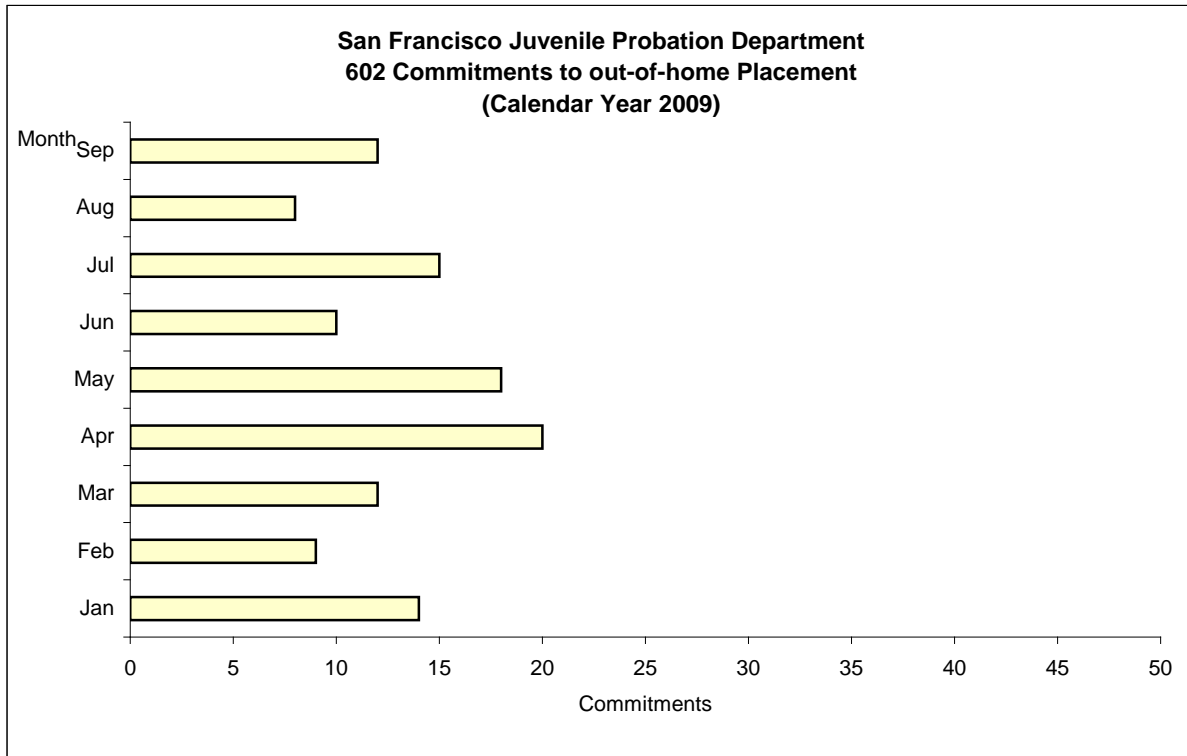
	Jan 09	Feb-09	Mar-09	Apr-09	May-09	Jun-09	Jul-09	Aug-09	Sep-09	Oct-09	Nov-09	Dec-09
JH Admissions	155	133	143	128	158	132	127	118	117			
Avg. Daily Pop.	107	119	117	127	127	114	112	108	105			



Out-of-Home Placement¹

Commitments of 602's Calendar Year 2009

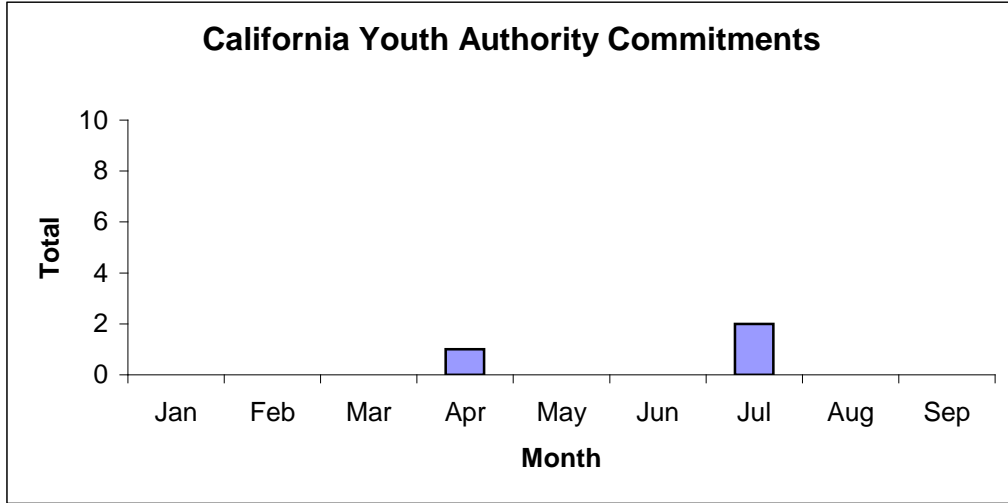
Commitments	Jan	Feb	Mar	Apr	May	Jun	Jul	Aug	Sep	Oct	Nov	Dec	Total
2009	14	9	12	20	18	10	15	8	12				118



¹ This report is based on 602 Commitments to out-of-home placements. If there is a 601 commitment, it will show as a footnote here. Figures are regularly updated to include reports from previous reporting periods.

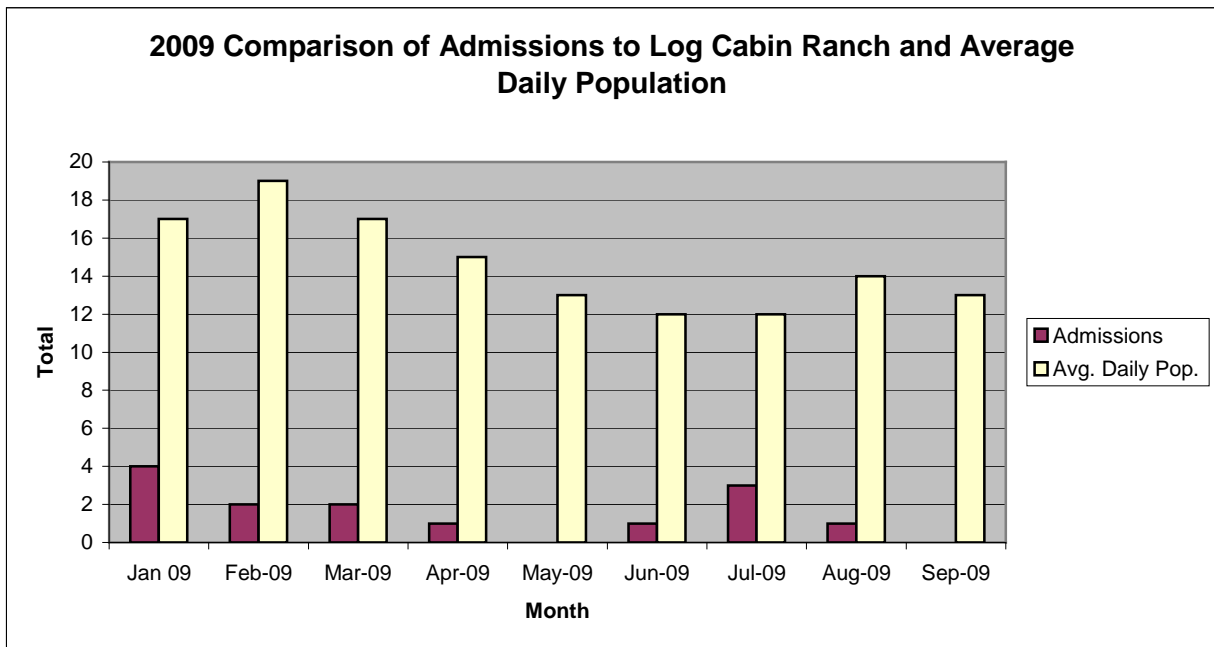
California Youth Authority
Commitments
(Calendar Year 2009)

Commitments	Jan	Feb	Mar	Apr	May	Jun	Jul	Aug	Sep	Oct	Nov	Dec	Total
2009	0	0	0	1	0	0	2	0	0				3



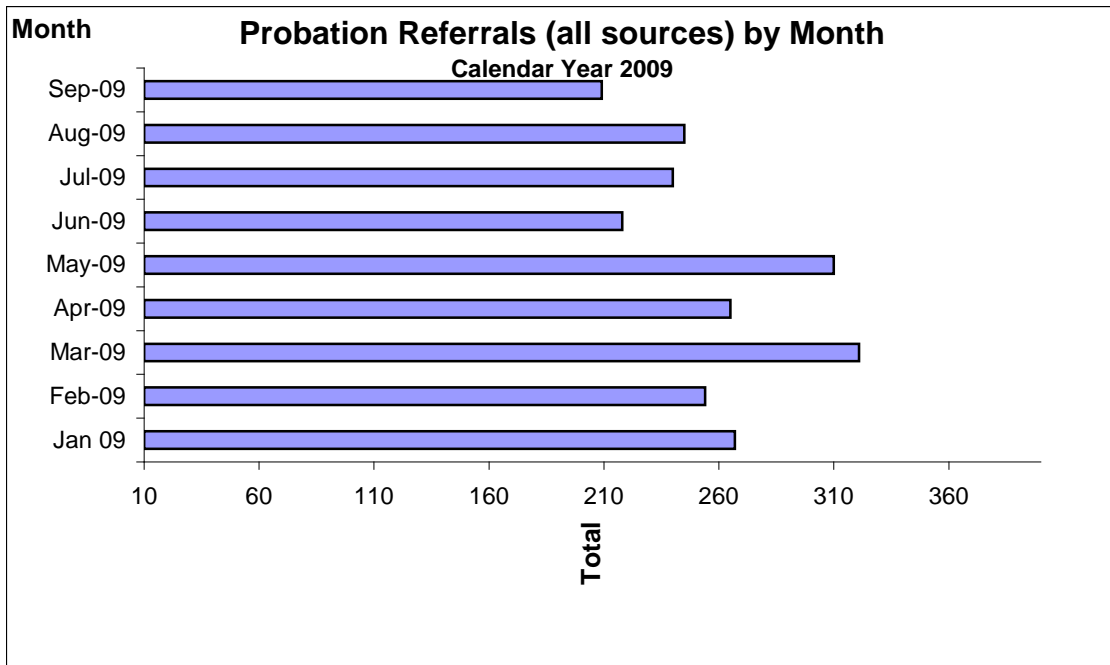
San Francisco Juvenile Probation Department

	Jan 09	Feb-09	Mar-09	Apr-09	May-09	Jun-09	Jul-09	Aug-09	Sep-09	Oct-09	Nov-09	Dec-09
Admissions	4	2	2	1	0	1	3	1	0			
Avg. Daily Pop.	17	19	17	15	13	12	12	14	13			



**Probation Referrals (all sources) by Month
(602 W&I)**

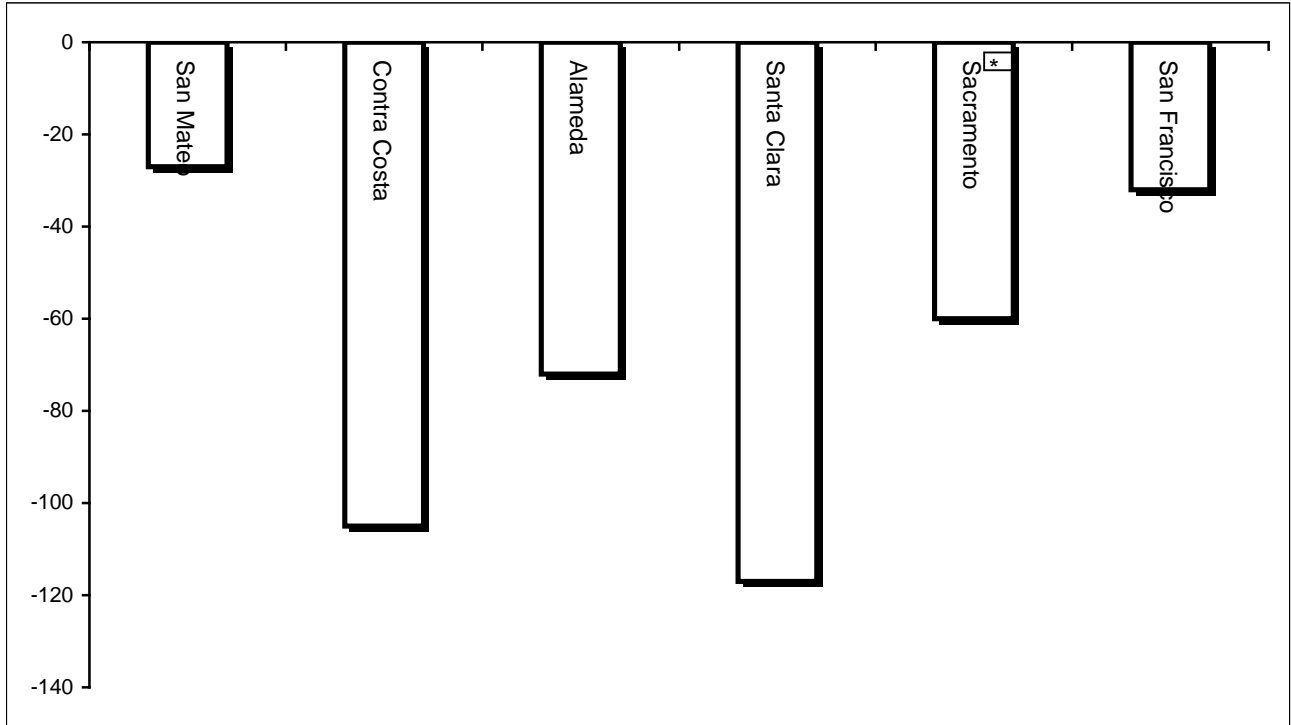
Jan 09	267
Feb-09	254
Mar-09	321
Apr-09	265
May-09	310
Jun-09	218
Jul-09	240
Aug-09	245
Sep-09	209
Oct-09	
Nov-09	
Dec-09	



San Francisco Juvenile Probation Department
 Monthly Incident Report
 MONTH/YEAR: September 2009

Log Cabin Ranch	Battery on Staff	Injury to Staff due to Restraint of Minor	Fight	Battery Youth on Youth	Attempted Escape	AWOL	Attempted Suicide	Serious Contraband (Weapon Illegal Drug)	Use of Restraints	Self Inflicted Injuries
	0	0	0	0	1	0	0	0	0	0
	Battery on Staff with Injury	Fire	Fight with Injury	Battery Youth on Youth with Injury	Escape	Death	Suicide	Major Property Destruction	Use of Force	
0	0	0	0	1	0	0	0	0		
Juvenile Hall	Battery on Staff	Injury to Staff due to Restraint of Minor	Fight	Battery Youth on Youth	Attempted Escape	AWOL	Attempted Suicide	Serious Contraband (Weapon Illegal Drug)	Use of Restraints	Self Inflicted Injuries
	1	0	4	2	0	0	1	11	1	1
	Battery on Staff with Injury	Fire	Fight with Injury	Battery Youth on Youth with Injury	Escape	Death	Suicide	Major Property Destruction	Use of Force	
1	0	7	1	0	0	0	0	2	14	

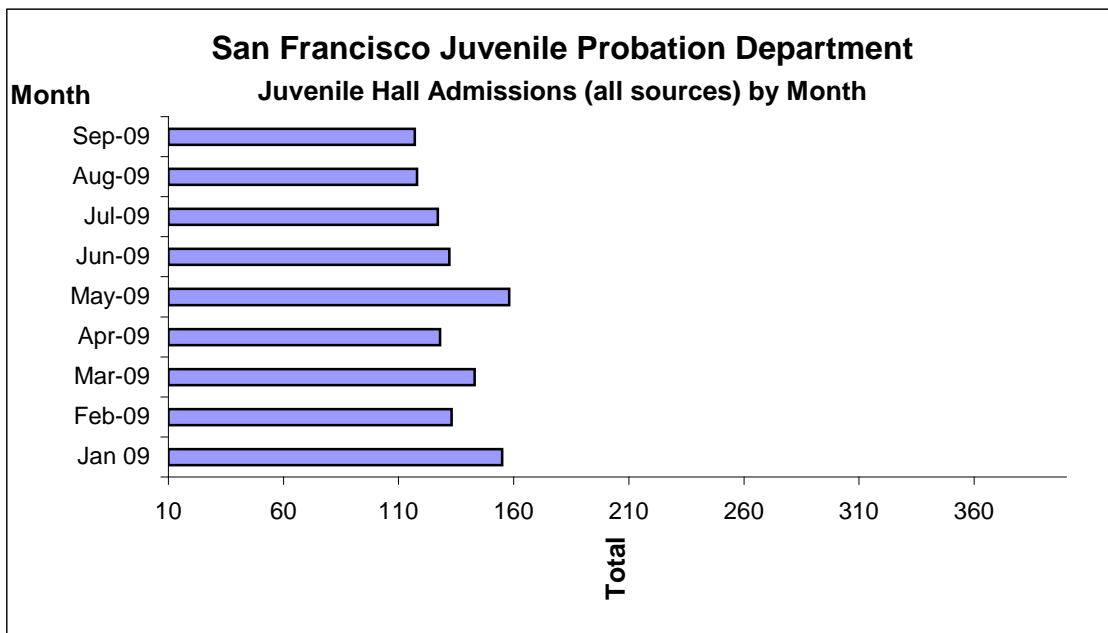
Bay Area Resident Juvenile Hall Comparison
Over/Under Capacity
on October 14th, 2009



	Rated Capacity	Actual	Over/Under Capacity
San Mateo	180	153	-27
Contra Costa	240	135	-105
Alameda	280	208	-72
Santa Clara	360	243	-117
Sacramento	308	248	-60
San Francisco	150	118	-32

Juvenile Hall Admissions by Month Calendar Year 2009

Jan 09	155
Feb-09	133
Mar-09	143
Apr-09	128
May-09	158
Jun-09	132
Jul-09	127
Aug-09	118
Sep-09	117
Oct-09	
Nov-09	
Dec-09	



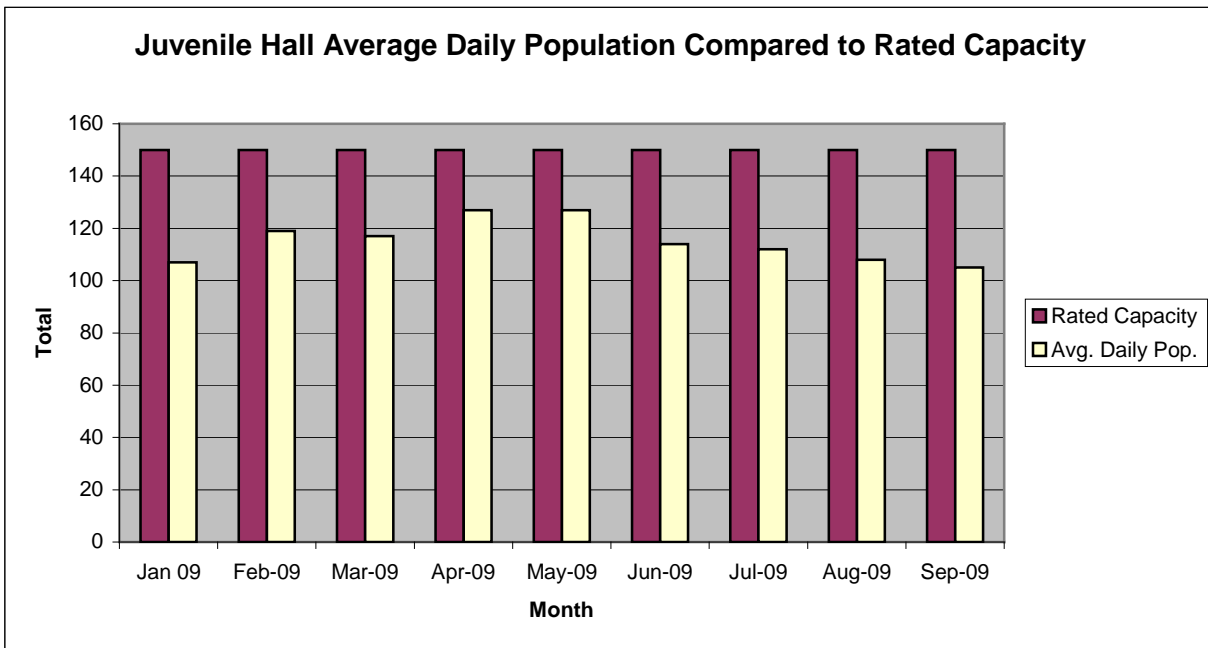
Characteristics of Juvenile Hall Detainees on September 30th, 2009

Detention Reason	Offense Code	MFI	Count	%
MURDER	187 (A) PC	F	2	1.89%
ATTEMPTED MURDER	664 /187 (A) PC	F	4	3.77%
ORAL COPULATION WITH PERSON UNDER 14/ETC OR BY FORCE/ETC	288 A (C) PC	F	1	0.94%
LEWD OR LASCIVIOUS ACTS W/CHILD UNDER 14 YEARS	288 (A) PC	F	1	0.94%
SEXUAL PENETRATION WITH FORCE/ETC	289 (A)(1) PC	F	1	0.94%
SHOOT AT INHABITED DWELLING/VEHICLE/ETC	246 PC	F	1	0.94%
ROBBERY	211 PC	F	25	23.58%
ASSAULT W/DEADLY WEAPON W/LIKELY GBI ON CUSTODIAL OFFICER	245.3 PC	F	1	0.94%
TRANSPORT/SELL NARCOTIC/CONTROLLED SUBSTANCE	11352 (A) HS	F	4	3.77%
BURGLARY	459 PC	F	5	4.72%
SELL/FURNISH/ETC MARIJUANA/HASHISH	11360 (A) HS	F	3	2.83%
FORCE OR ADW NOT FIREARM:GBI LIKELY	245 (A)(1) PC	F	7	6.60%
ATTEMPTED ROBBERY	664 /211 PC	F	1	0.94%
POSSESS MARIJUANA FOR SALE	11359 HS	F	1	0.94%
POSSESS CONTROLLED SUBSTANCE FOR SALE	11378 HS	F	1	0.94%
FELON/ADDICT/ETC POSSESS FIREARM	12021 (A)(1) PC	F	1	0.94%
TAMPER WITH IDENTIFICATION MARKS ON FIREARM	12090 PC	F	1	0.94%
THREATEN CRIME W/INTENT TO TERRORIZE	422 PC	F	1	0.94%
GRAND THEFT:MONEY/LABOR/PROPERTY OVER \$400	487 (A) PC	F	1	0.94%
TAKE VEHICLE W/O OWNER'S CONSENT/VEHICLE THEFT	10851 (A) VC	F	1	0.94%
RECEIVE/ETC KNOWN STOLEN PROPERTY	496 (A) PC	F	1	0.94%
POSSESS CONTROLLED SUBSTANCE	11377 (A) HS	F	1	0.94%
CONVICTED PERSON POSSESS/ETC FIREARM:UNDER 30 YEARS OF AGE	12021 (E) PC	F	2	1.89%
CARRY CONCEALED WEAPON ON PERSON W/PRIOR CONVICTION	12025 (A)(2) PC	F	1	0.94%
POSSESS/MANUFACTURE/SELL DANGEROUS WEAPONS/EXPLOSIVES/ETC	12020 (A) PC	F	1	0.94%
VANDALISM [\$5,000 OR OVER]	594 (A) PC	F	1	0.94%
OBSTRUCT/RESIST/ETC PUBLIC/PEACE OFFICER/EMERGENCY MED TECH	148 (A)(1) PC	M	3	2.83%
CARRY CONCEALED WEAPON ON PERSON	12025 (A)(2) PC	M	2	1.89%
MINOR ATTEMPT ESCAPE/ESCAPE COUNTY FACILITY	871 (A) WI	M	1	0.94%
VANDALISM LESS THAN \$400	594 (B)(2)(A) PC	M	1	0.94%
ASSAULT AND BATTERY	240 /242 PC	M	1	0.94%
TOUCH PERSON INTIMATELY AGAINST WILL FOR SEXUAL AROUSAL/ETC	243.4 (E)(1) PC	M	1	0.94%
SELLING AMMUNITION TO A MINOR	12316 (A) PC	M	1	0.94%
LOITER:INTENT:PROSTITUTION	653.22(A) PC	M	1	0.94%
FAIL TO OBEY ORDER OF JUVENILE COURT 602 WI	777 (A)(2) WI	M	5	4.72%
CHANGE OF PLACEMENT/PLACEMENT FAILURE	737 WI	M	6	5.66%
COURT ORDER 602	CTORD 602		5	4.72%
BENCH WARRANT	BENCH WARRANT		2	1.89%
WARRANT 602	WRNT602		7	6.60%
		Total	106	100.00%

*M=Misdemeanor; F=Felony

San Francisco Juvenile Probation Department

	Jan 09	Feb-09	Mar-09	Apr-09	May-09	Jun-09	Jul-09	Aug-09	Sep-09	Oct-09	Nov-09	Dec-09
Rated Capacity	150	150	150	150	150	150	150	150	150	150	150	150
Avg. Daily Pop.	107	119	117	127	127	114	112	108	105			



For the Month of September 2009

¹Released

Range of Days	<i>1-10 days</i>	<i>11-20 days</i>	<i>21-30 days</i>	<i>30 or more days</i>	Total
# of Youth Released	59	26	9	37	131
% of Population	45.04%	19.85%	6.87%	28.24%	100%
# of Days	214	368	225	4887	5694
% of Total Days	3.76%	6.46%	3.95%	85.83%	100%
Average Length of Stay	3.63	14.15	25.00	132.08	43.47

²In Custody

Range of Days	<i>1-10 days</i>	<i>11-20 days</i>	<i>21-30 days</i>	<i>30 or more days</i>	Total
# of Youth Detained	29	21	12	44	106
% of Population	27.36%	19.81%	11.32%	41.51%	100%
# of Days	146	302	304	7276	8028
% of Total Days	1.82%	3.76%	3.79%	90.63%	100%
Average Length of Stay	5.03	14.38	25.33	165.36	75.74

Notes: Less than one day of stay is calculated as one day.

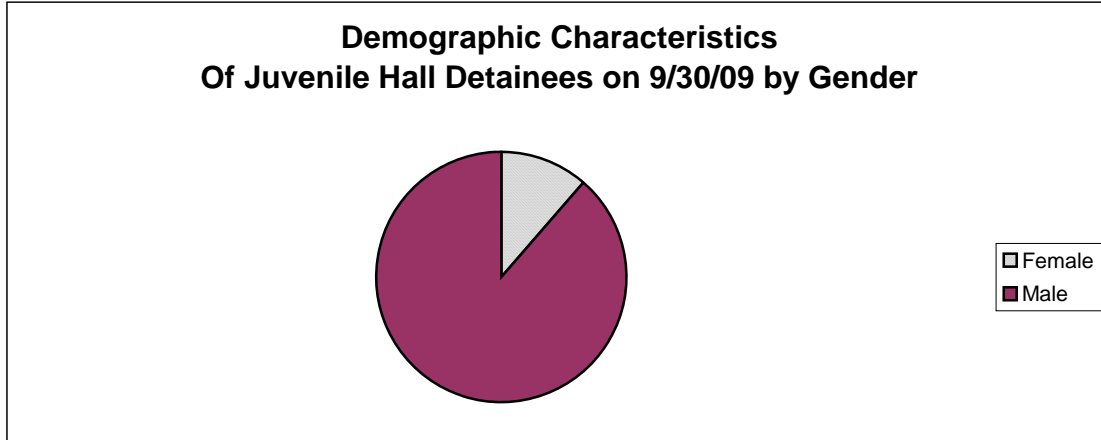
¹Length of stay is calculated according to release date for those who are released.

²For those still in custody, length of stay is calculated at the last day of the month.

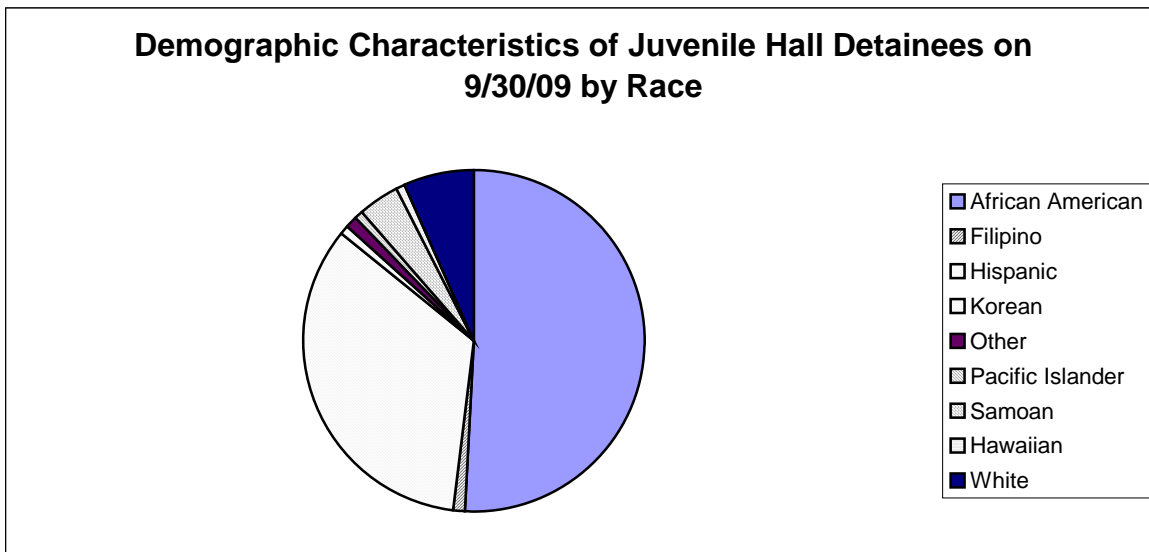
Section III

Demographics

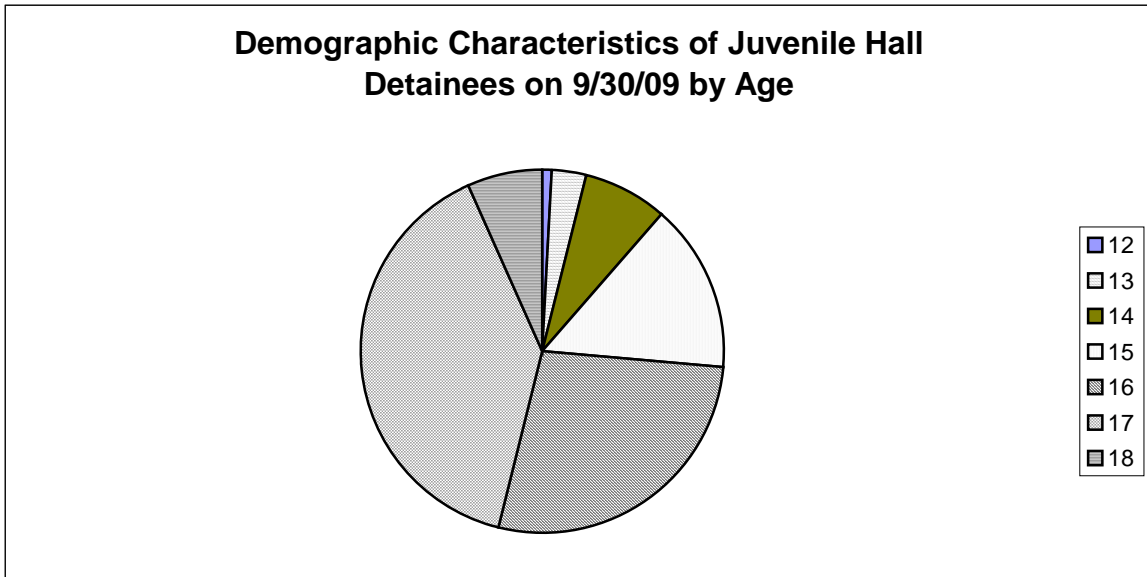
Gender	Frequency	Percent
Female	12	11.32%
Male	94	88.68%
Total	106	100.00%



Race/Ethnic Origin	Frequency	Percent
African American	54	50.94%
Filipino	1	0.94%
Hispanic	36	33.96%
Korean	1	0.94%
Other	1	0.94%
Pacific Islander	1	0.94%
Samoan	4	3.77%
Hawaiian	1	0.94%
White	7	6.60%
Total	106	100.00%

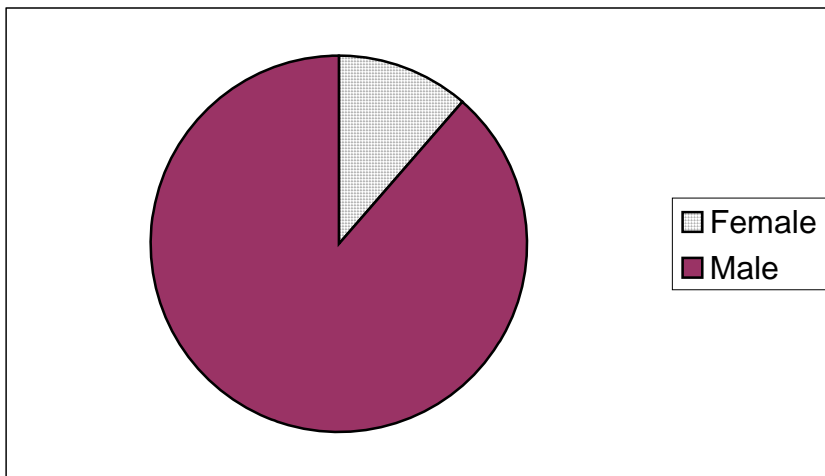


Age	Frequency	Percent
12	1	0.94%
13	3	2.83%
14	8	7.55%
15	16	15.09%
16	29	27.36%
17	42	39.62%
18	7	6.60%
Total	106	100.00%



Demographic Characteristics of Juvenile Hall Detainees
on 9/30/2009
Age by Gender

Age	Female	Male	Total	
11	0	0	0	0.00%
12	1	0	1	0.94%
13	0	3	3	2.83%
14	1	7	8	7.55%
15	3	13	16	15.09%
16	4	25	29	27.36%
17	2	40	42	39.62%
18 and over	1	6	7	6.60%
Total	12	94	106	100.00%
	11.32%	88.68%	100.00%	



Demographic Characteristics
Of Juvenile Hall Detainees on September 30th, 2009

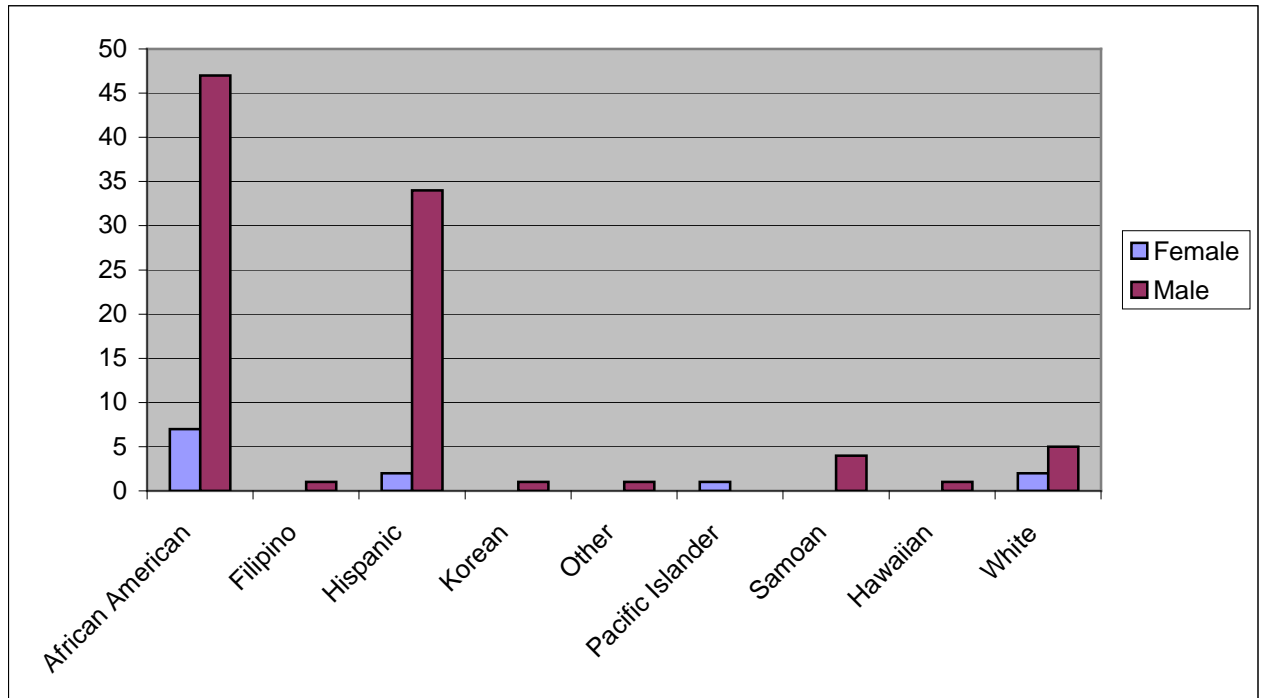
Geographic Residence of Youth	Count	%
Richmond	0	0.0%
Marina	0	0.0%
North of Market/Downtown	4	3.8%
Treasure Island/Yerba Buena Island	1	0.9%
Western Addition	7	6.6%
South of Market/Tenderloin	0	0.0%
Sunset	5	4.7%
Haight Ashbury/Castro/Upper Market	2	1.9%
Inner Mission	13	12.3%
Potrero	4	3.8%
Parkside	0	0.0%
Ingleside (West of Twin Peaks)	5	4.7%
Outer Mission	28	26.4%
Bayview	15	14.2%
Non-San Francisco and Unavailable	22	20.8%
Total	106	100.0%

Non-San Francisco and Unavailable	Count	%
Brentwood	1	4.5%
Daly City	4	18.2%
Honduras	2	9.1%
Oakland	2	9.1%
Pine Bluff	1	4.5%
Rohnert Park	1	4.5%
San Bruno	1	4.5%
Santa Rosa	2	9.1%
Sausalito	1	4.5%
Selma	1	4.5%
Vallejo	1	4.5%
Unavailable	5	22.7%
Total	22	100.0%

Demographic Characteristics
Of Juvenile Hall Detainees on September 30th, 2009

Race/Ethnic Origin by Gender

Race/Ethnicity	Female	Male	Total	%
African American	7	47	54	50.9%
Filipino	0	1	1	0.9%
Hispanic	2	34	36	34.0%
Korean	0	1	1	0.9%
Other	0	1	1	0.9%
Pacific Islander	1	0	1	0.9%
Samoan	0	4	4	3.8%
Hawaiian	0	1	1	0.9%
White	2	5	7	6.6%
Total	12	94	106	100.0%

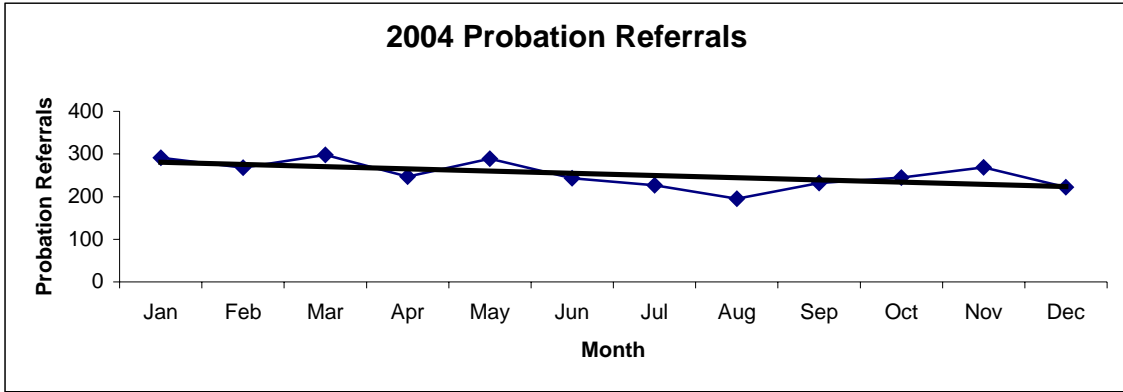


Section IV

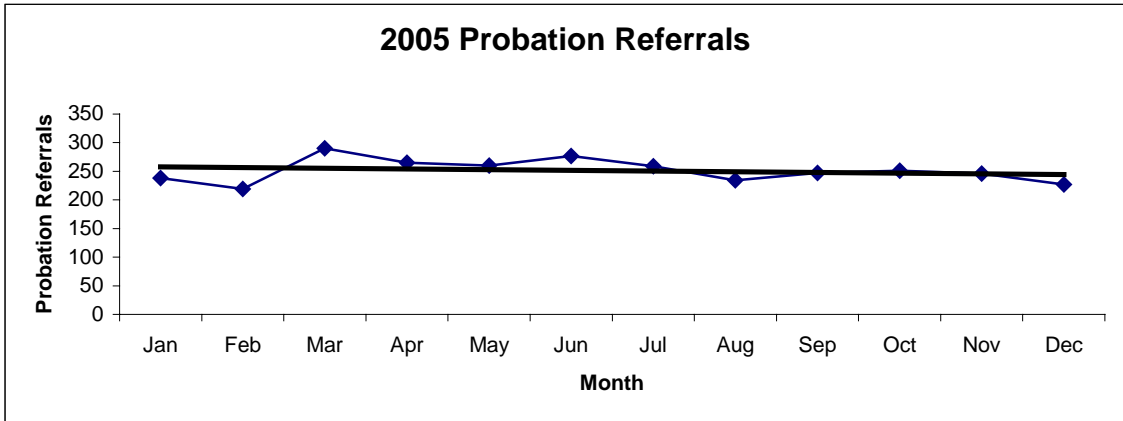
Historical Information

San Francisco Juvenile Probation Department
Probation Referrals (all sources) By Month
 (2004-2006)

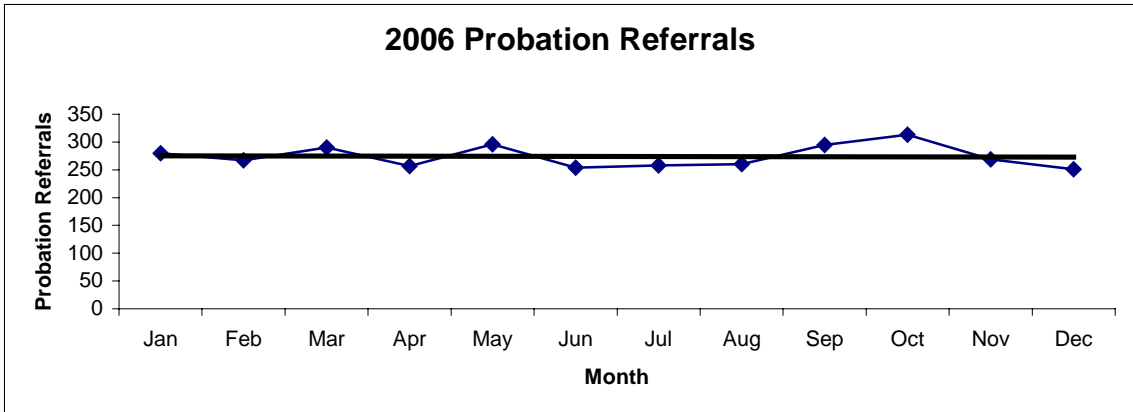
2004 Probation Referrals	Jan	Feb	Mar	Apr	May	Jun	Jul	Aug	Sep	Oct	Nov	Dec	Total
	291	268	298	247	289	243	227	195	232	245	269	222	3026



2005 Probation Referrals	Jan	Feb	Mar	Apr	May	Jun	Jul	Aug	Sep	Oct	Nov	Dec	Total
	238	219	290	265	260	277	259	234	247	251	246	227	3013

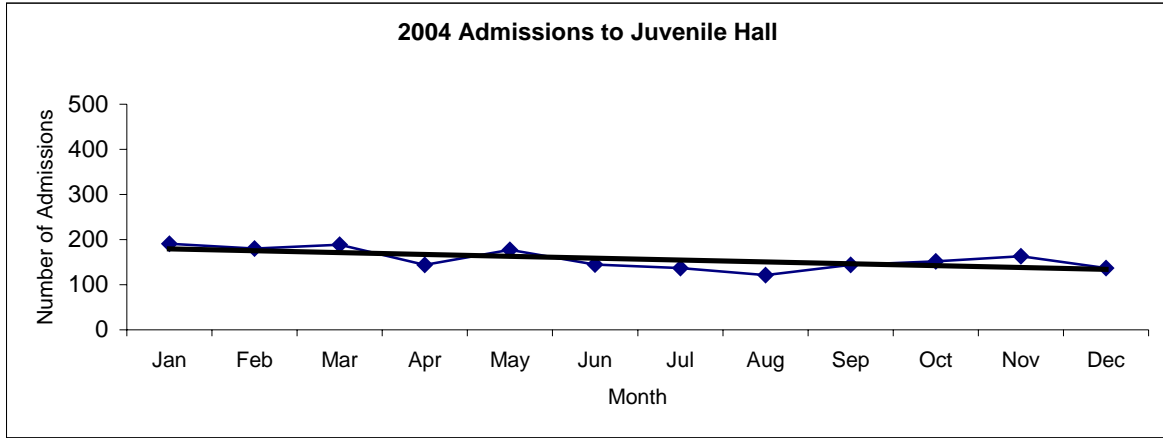


2006 Probation Referrals	Jan	Feb	Mar	Apr	May	Jun	Jul	Aug	Sep	Oct	Nov	Dec	Total
	280	267	290	257	296	254	258	260	295	313	269	251	3290

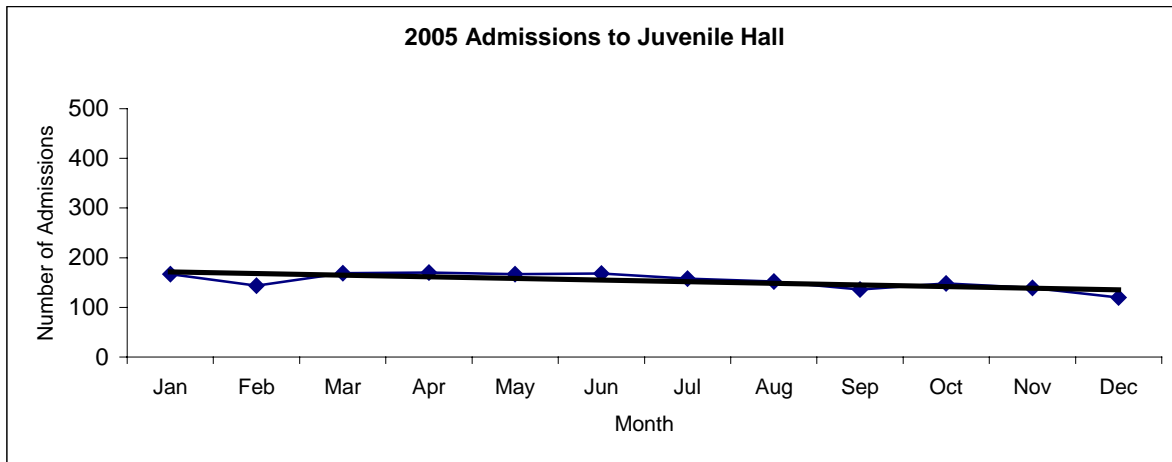


**San Francisco Juvenile Probation
Juvenile Hall Admissions By Month
(2004-2006)**

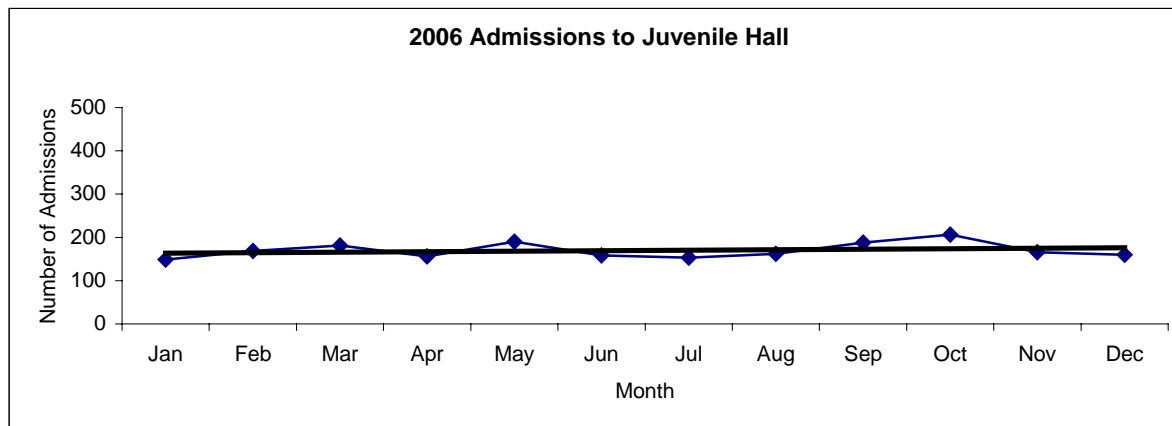
2004 Admissions	Jan	Feb	Mar	Apr	May	Jun	Jul	Aug	Sep	Oct	Nov	Dec	Total
	191	180	189	144	177	145	137	121	144	152	163	137	1880



2005 Admissions	Jan	Feb	Mar	Apr	May	Jun	Jul	Aug	Sep	Oct	Nov	Dec	Total
	167	144	169	170	167	168	158	152	136	148	139	120	1838

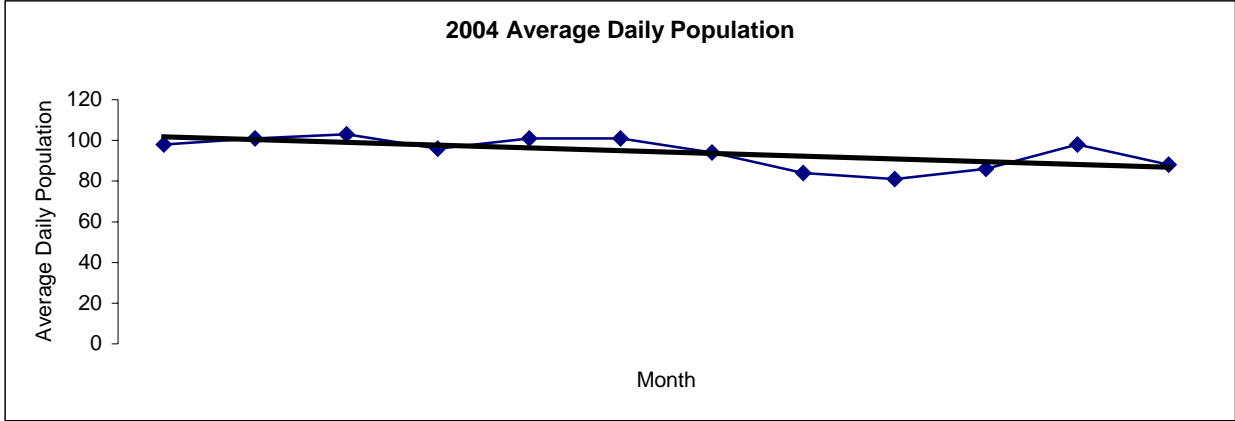


2006 Admissions	Jan	Feb	Mar	Apr	May	Jun	Jul	Aug	Sep	Oct	Nov	Dec	Total
	149	169	181	156	190	158	153	162	188	206	166	160	2038

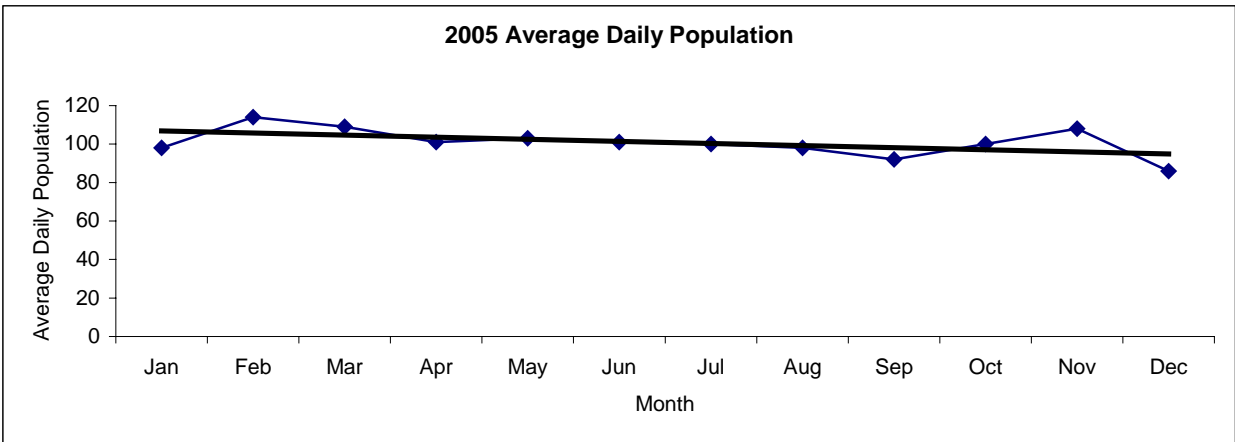


San Francisco Juvenile Probation
Juvenile Hall Average Daily Population By Month
 (2004-2006)

2004 Avg. Daily Pop.	Jan	Feb	Mar	Apr	May	Jun	Jul	Aug	Sep	Oct	Nov	Dec	Total
	98	101	103	96	101	101	94	84	81	86	98	88	94



2005 Avg. Daily Pop.	Jan	Feb	Mar	Apr	May	Jun	Jul	Aug	Sep	Oct	Nov	Dec	Total
	98	114	109	101	103	101	100	98	92	100	108	86	100



2006 Avg. Daily Pop.	Jan	Feb	Mar	Apr	May	Jun	Jul	Aug	Sep	Oct	Nov	Dec	Total
	81	90	100	99	111	112	107	104	104	128	122	119	106

