

City and County of San Francisco



Juvenile Probation Department

Monthly Report for October 2008

Presented to the Juvenile Probation Commission

November 12th, 2008

William P. Siffermann
Chief Probation Officer

Prepared by Jose Luis Perla
Information Technology Director
(415) 753-7686
jose.perla@sfgov.org

Table of Contents

Section I Summary Reports

Juvenile Hall, Log Cabin Ranch Summary Statistics	1
Probation Services Summary and California Youth Authority Statistics.....	2
Active Cases by Units.....	3

Section II Current Month General Detail

Probation Referrals, Juvenile Admissions And Average Daily Population	4
Juvenile Hall Admissions and Average Daily Population.....	5
Commitments to out-of-home placement	6
Commitments to California Youth Authority	7
Log Cabin Ranch Admissions and Average Daily Population.....	8
Probation Referrals	9
Juvenile Hall And Log Cabin Ranch Incident Report	10
Bay Area Resident Juvenile Hall Comparison	11
Juvenile Hall Admissions	12
Juvenile Hall Detainees by Detention Reason.....	13
Juvenile Hall Average Daily Population by Rated Capacity	14
Juvenile Hall Average Length of Stay	15

Section III Demographics

Juvenile Hall Detainees by Sex and Race/Ethnic Origin.....	16
Juvenile Hall Detainees by Age.....	17
Juvenile Hall Detainees by Age and Sex	18
Juvenile Hall Detainees by Geographic Residence of Youth.....	19
Juvenile Hall Detainees by Race/Ethnic Origin and Sex.....	20

Section IV
Historical Information

2004-2006 Probation Referrals21
2004-2006 Juvenile Hall Admissions22
2004-2006 Juvenile Hall Average Daily Population23



Section I

Summary Reports

Summary Report for the Month of October 2008

Juvenile Hall	<i>September 2007</i>	<i>September 2008</i>	<i>October 2007</i>	<i>October 2008</i>	<i>YTD 2007</i>	<i>YTD 2008</i>
Admissions	125	170	160	185	1558	1640
Average Daily Population	110	123	115	133	118	123
Average Length of Stay (Releases)	24.22	24.21	25.66	19.23	21.62	21.72
Average Length of Stay (In Custody)	58.25	52.92	55.28	57.07	49.03	50.91
Releases	123	144	161	186	1559	1615
Log Cabin Ranch						
Admissions:						
First Time Commitments	2	1	2	1	32	11
Recommitments	1	0	0	0	6	1
<i>Total</i>	3	1	2	1	38	12
Releases:						
Graduated	0	1	1	1	24	17
Escape	1	2	0	0	2	2
Other releases	1	2	3	2	21	13
<i>Total</i>	2	5	4	3	47	32
Average Daily Population	27	14	28	10	28	16
Incident Reports						
Juvenile Hall	31	79	35	83	234	623
Log Cabin Ranch	3	6	0	3	27	16
<i>Total</i>	34	85	35	86	261	639

Summary Report for the Month of October 2008

Probation Services	<i>September 2008</i>	<i>October 2008</i>	<i>Year To Date 2008</i>
Probation Referrals	263	302	2603
Total Petitions including violation of probation	154	155	1330
Selected Court Dispositions:			
California Youth Authority	0	1	2
Log Cabin Ranch	1	2	13
Out of Home Placement	16	17	180
Ward Probation	37	33	318
Non-Ward Probation (725a WI)	4	5	35
Informal Probation (654 WI)	20	23	175
Violation of Probation Petitions Filed	15	26	133
California Youth Authority Monthly Count San Francisco County Juvenile Court Cases September 30th, 2008			
Category	Institutions	Parole	
Males			
White	0	1	
Hispanic	0	8	
African American	3	13	
Asian	0	1	
Native American	0	0	
Filipino	0	0	
Pacific Islander	0	1	
Other	0	0	
Total	3	24	
Females			
White	0	0	
Hispanic	0	2	
African American	1	0	
Asian	0	0	
Native American	0	0	
Filipino	0	0	
Pacific Islander	0	0	
Other	0	0	
Total	1	2	
Grand Total	4	26	

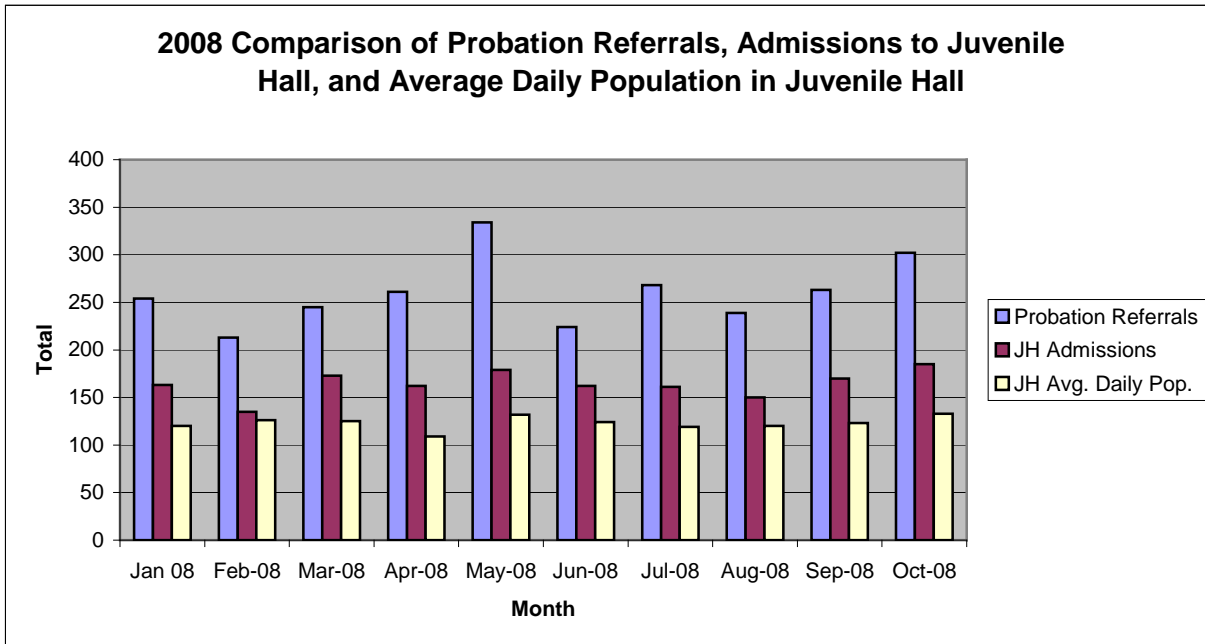
Summary Report for the Month of October 2008

Probation Services			
Active Cases by Units	September 2008	October 2008	October Average # Youth by PO
CARC	119	138	138
Intake Green (Custody Screening Investigation)	204	189	23
Intake Gold (Probation Services 1)	289	280	40
Probation Services 2	211	217	21
Probation Services 3	333	352	35
Probation Services 4	222	214	26
Special Services	20	17	4
<i>Total</i>	1398	1407	41
Total Active Intake Cases	682	676	
Total Probation/Supervision Cases	716	731	

Section II
Current Month
General Detail

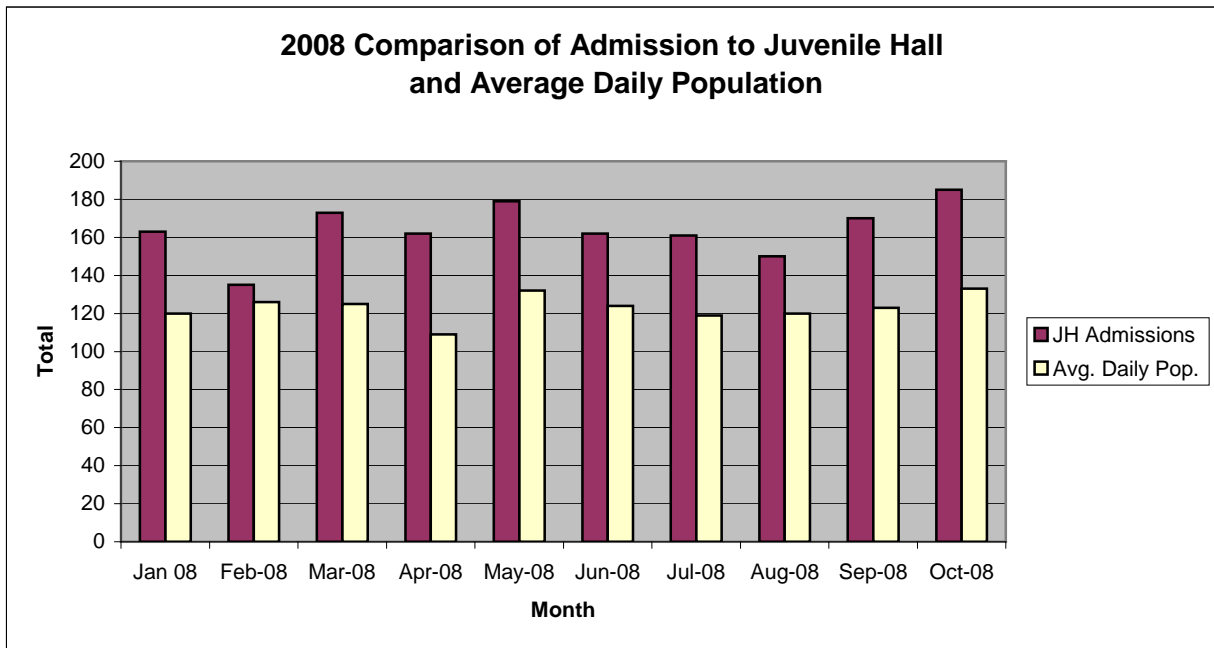
San Francisco Juvenile Probation Department

	Jan 08	Feb-08	Mar-08	Apr-08	May-08	Jun-08	Jul-08	Aug-08	Sep-08	Oct-08	Nov-08	Dec-08
Probation Referrals	254	213	245	261	334	224	268	239	263	302		
JH Admissions	163	135	173	162	179	162	161	150	170	185		
JH Avg. Daily Pop.	120	126	125	109	132	124	119	120	123	133		



San Francisco Juvenile Probation Department

	Jan 08	Feb-08	Mar-08	Apr-08	May-08	Jun-08	Jul-08	Aug-08	Sep-08	Oct-08	Nov-08	Dec-08
JH Admissions	163	135	173	162	179	162	161	150	170	185		
Avg. Daily Pop.	120	126	125	109	132	124	119	120	123	133		

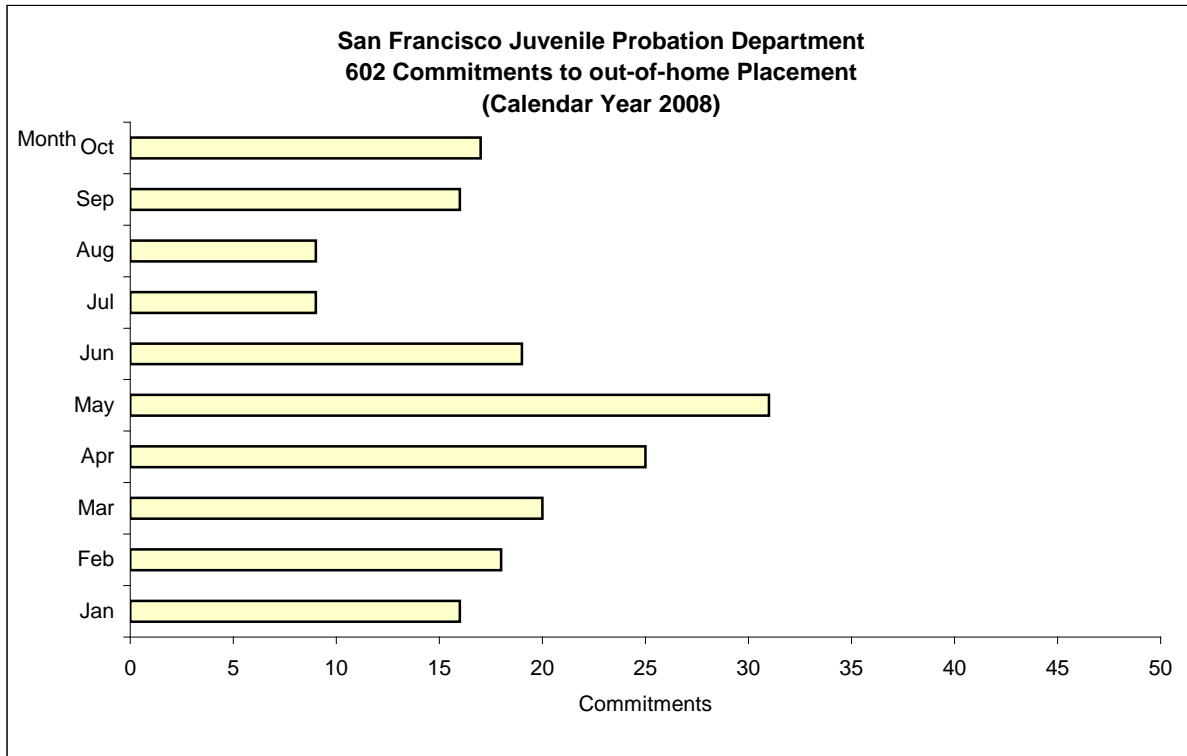


Out-of-Home Placement¹

Commitments of 602's

Calendar Year 2008

Commitments	Jan	Feb	Mar	Apr	May	Jun	Jul	Aug	Sep	Oct	Nov	Dec	Total
2008	16	18	20	25	31	19	9	9	16	17			180



¹ This report is based on 602 Commitments to out-of-home placements. If there is a 601 commitment, it will show as a footnote here. Figures are regularly updated to include reports from previous reporting periods.

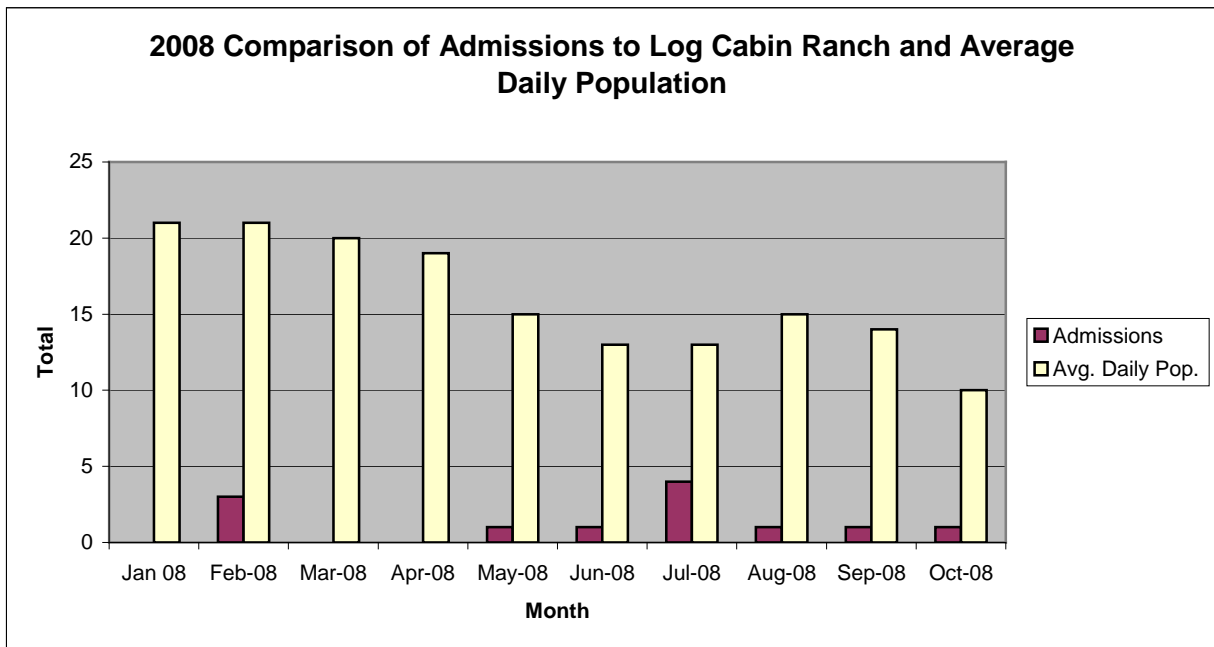
California Youth Authority
 Commitments
 (Calendar Year 2008)

Commitments	Jan	Feb	Mar	Apr	May	Jun	Jul	Aug	Sep	Oct	Nov	Dec	Total
2008	1	0	0	0	0	0	0	0	0	1			2



San Francisco Juvenile Probation Department

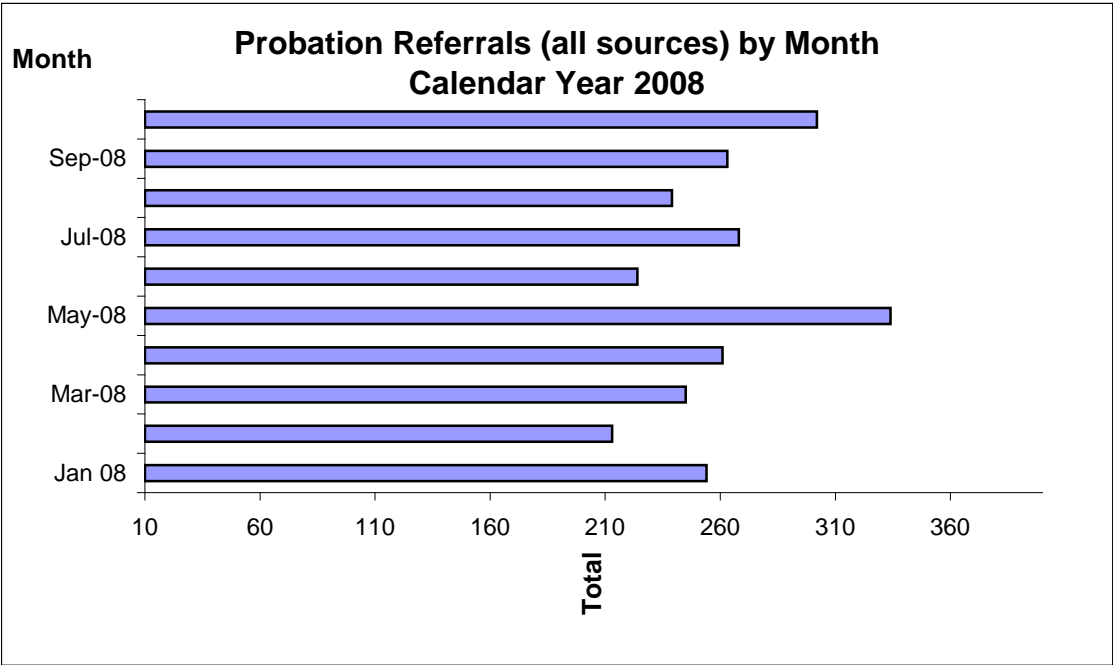
	Jan 08	Feb-08	Mar-08	Apr-08	May-08	Jun-08	Jul-08	Aug-08	Sep-08	Oct-08	Nov-08	Dec-08
Admissions	0	3	0	0	1	1	4	1	1	1		
Avg. Daily Pop.	21	21	20	19	15	13	13	15	14	10		



Probation Referrals by Month Calendar Year 2008

Probation Referrals (all sources) by Month (602 W&I)

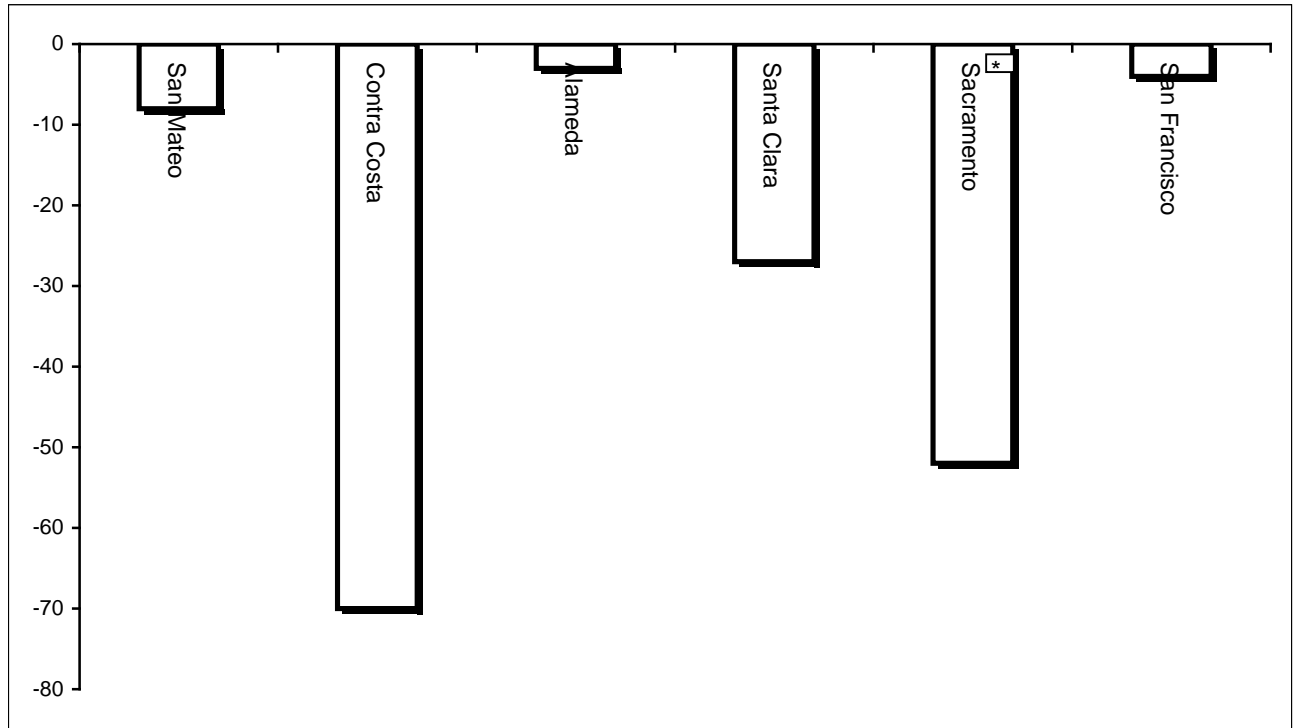
Jan 08	254
Feb-08	213
Mar-08	245
Apr-08	261
May-08	334
Jun-08	224
Jul-08	268
Aug-08	239
Sep-08	263
Oct-08	302
Nov-08	
Dec-08	



SAN FRANCISCO JUVENILE PROBATION DEPARTMENT
MONTHLY INCIDENT REPORT FORM
MONTH/YEAR: OCTOBER 2008

Log Cabin Ranch	Battery on Staff	Injury to Staff due to Restraint of Minor	Fight	Battery Youth on Youth	Attempted Escape	AWOL	Attempted Suicide	Serious Contraband (Weapon Illegal Drug)	Use of Restraints	Self Inflicted Injuries
	0	0	0	0	0	2	0	1	0	0
	Battery on Staff with Injury	Fire	Fight with Injury	Battery Youth on Youth with Injury	Escape	Death	Suicide	Major Property Destruction	Use of Force	
0	0	0	0	0	0	0	0	0	0	
Juvenile Hall	Battery on Staff	Injury to Staff due to Restraint of Minor	Fight	Battery Youth on Youth	Attempted Escape	AWOL	Attempted Suicide	Serious Contraband (Weapon Illegal Drug)	Use of Restraints	Self Inflicted Injuries
	12	2	5	7	0	0	0	11	8	1
	Battery on Staff with Injury	Fire	Fight with Injury	Battery Youth on Youth with Injury	Escape	Death	Suicide	Major Property Destruction	Use of Force	
0	0	5	9	0	0	0	0	2	21	

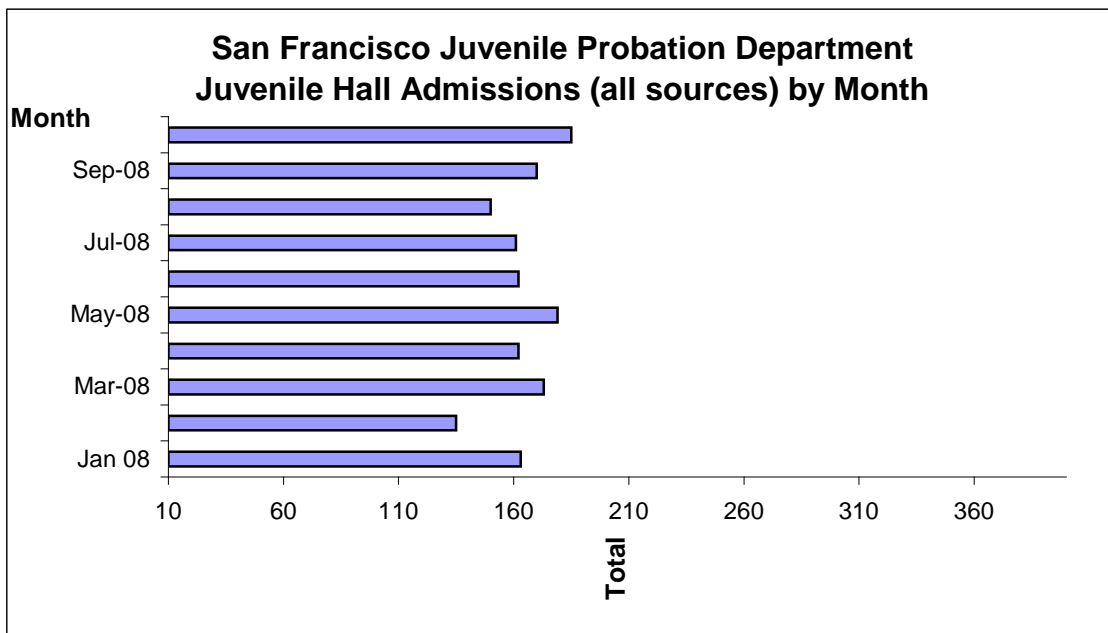
Bay Area Resident Juvenile Hall Comparison
Over/Under Capacity
on November 3rd, 2008



	Rated Capacity	Actual	Over/Under Capacity
San Mateo	180	172	-8
Contra Costa	240	170	-70
Alameda	280	277	-3
Santa Clara	360	333	-27
Sacramento	308	256	-52
San Francisco	150	146	-4

Juvenile Hall Admissions by Month Calendar Year 2008

Jan 08	163
Feb-08	135
Mar-08	173
Apr-08	162
May-08	179
Jun-08	162
Jul-08	161
Aug-08	150
Sep-08	170
Oct-08	185
Nov-08	
Dec-08	



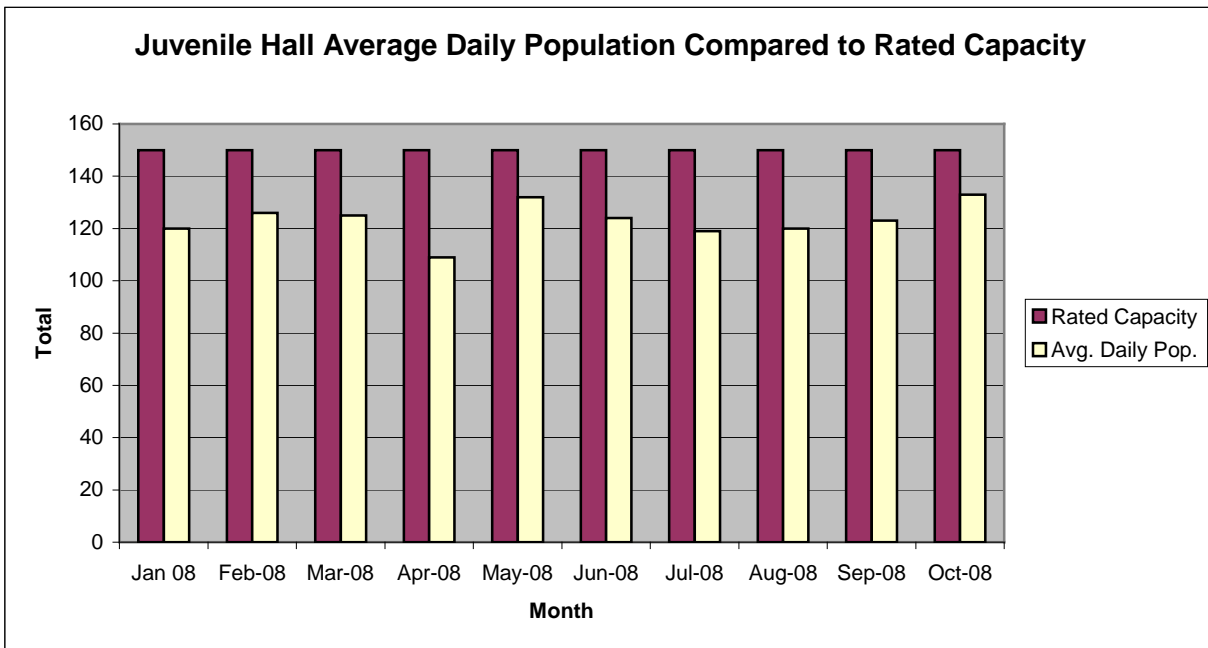
Characteristics of Juvenile Hall Detainees on October 31st, 2008

Detention Reason	Offense Code	MF	Count	%
MURDER	187 (A) PC	F	6	4.32%
ATTEMPTED MURDER:SECOND DEGREE ON PEACE OFFICER	664 /187 (A) PC	F	3	2.16%
AGGRAVATED MAYHEM	205 PC	F	1	0.72%
RAPE OF DRUGGED VICTIM	261 (A)(3) PC	F	1	0.72%
SEXUAL PENETRATION WITH FORCE/ETC	289 (A)(1) PC	F	1	0.72%
CARJACKING	215 PC	F	1	0.72%
KIDNAPPING	207 (A) PC	F	1	0.72%
ARSON:INHABITED STRUCTURE/PROPERTY	451 (B) PC	F	1	0.72%
DISCHARGE FIREARM FROM VEHICLE AT PERSON	12034 (C) PC	F	1	0.72%
ROBBERY	211 PC	F	28	20.14%
ASSAULT W/DEADLY WEAPON W/LIKELY GBI ON CUSTODIAL OFFICER	245.3 PC	F	1	0.72%
TRANSPORT/SELL NARCOTIC/CONTROLLED SUBSTANCE	11352 (A) HS	F	7	5.04%
BURGLARY	459 PC	F	3	2.16%
HAVE FIREARM AT PUBLIC/ETC SCHOOL	626.9(B) PC	F	2	1.44%
SELL/FURNISH/ETC MARIJUANA/HASHISH	11360 (A) HS	F	2	1.44%
TRANSPORT/ETC CONTROLLED SUBSTANCE	11379 (A) HS	F	1	0.72%
POSSESS SPECIFIED CONTROLLED SUBSTANCE AND LOADED FIREARM	11370.1 HS	F	1	0.72%
INFLICT CORPORAL INJURY ON SPOUSE/COHABITANT	273.5 PC	F	1	0.72%
ASSAULT WITH FIREARM ON PERSON	245 (A)(2) PC	F	2	1.44%
FORCE OR ADW NOT FIREARM:GBI LIKELY	245 (A)(1) PC	F	10	7.19%
FELON/ADDICT/ETC POSSESS FIREARM	12021 (A)(1) PC	F	6	4.32%
CARRY CONCEALED WEAPON IN VEHICLE W/PRIOR FELONY CONVICTION	12025 (A)(1) PC	F	2	1.44%
THREATEN CRIME W/INTENT TO TERRORIZE	422 PC	F	1	0.72%
GRAND THEFT:MONEY/LABOR/PROPERTY OVER \$400	487 (A) PC	F	2	1.44%
TAKE VEHICLE W/O OWNER'S CONSENT/VEHICLE THEFT	10851 (A) VC	F	2	1.44%
RECEIVE/ETC KNOWN STOLEN PROPERTY	496 (A) PC	F	2	1.44%
CARRY CONCEALED WEAPON ON PERSON W/PRIOR CONVICTION	12025 (A)(2) PC	F	2	1.44%
MINOR ATT ESCAPE/ESCAPE COUNTY FACILITY W/FORCE OR VIOLENCE	871 (B) WI	F	1	0.72%
VANDALISM (\$400 OR MORE)	594 (B)(1) PC	F	3	2.16%
OBSTRUCT/RESIST/ETC PUBLIC/PEACE OFFICER/EMERGENCY MED TECH	148 (A)(1) PC	M	1	0.72%
BATTERY ON PERSON ON PROPERTY OF SCHOOL/PARK/ETC	243.2(A) PC	M	1	0.72%
VANDALISM LESS THAN \$400	594 (B)(2)(A) PC	M	1	0.72%
PETTY THEFT	484 (A) PC	M	1	0.72%
MINOR ILLEGALLY POSSESS CONCEALED WEAPON	12101 (A)(1) PC	M	1	0.72%
DISORDERLY CONDUCT:PROSTITUTION	647 (B) PC	M	1	0.72%
FAIL TO OBEY ORDER OF JUVENILE COURT 602 WI	777 (A)(2) WI	M	2	1.44%
CHANGE OF PLACEMENT/PLACEMENT FAILURE	737 WI	M	6	4.32%
VIOLATION(S) OF HOME SUPERVISION CONDITION	628.1 WI	M	5	3.60%
WARRANT	WRNT602		19	13.67%
COURT ORDER	CTORD		6	4.32%
	Total		139	100.00%

*M=Misdemeanor; F=Felony

San Francisco Juvenile Probation Department

	Jan 08	Feb-08	Mar-08	Apr-08	May-08	Jun-08	Jul-08	Aug-08	Sep-08	Oct-08	Nov-08	Dec-08
Rated Capacity	150	150	150	150	150	150	150	150	150	150	150	150
Avg. Daily Pop.	120	126	125	109	132	124	119	120	123	133		



Juvenile Hall Average Length of Stay

For the Month of October 2008

¹Released

Range of Days	<i>1-10 days</i>	<i>11-20 days</i>	<i>21-30 days</i>	<i>30 or more days</i>	Total
# of Youth Released	106	27	21	32	186
% of Population	56.99%	14.52%	11.29%	17.20%	100%
# of Days	392	413	540	2232	3577
% of Total Days	10.96%	11.55%	15.10%	62.40%	100%
Average Length of Stay	3.70	15.30	25.71	69.75	19.23

²In Custody

Range of Days	<i>1-10 days</i>	<i>11-20 days</i>	<i>21-30 days</i>	<i>30 or more days</i>	Total
# of Youth Detained	37	25	15	62	139
% of Population	26.62%	17.99%	10.79%	44.60%	100%
# of Days	215	362	387	6969	7933
% of Total Days	2.71%	4.56%	4.88%	87.85%	100%
Average Length of Stay	5.81	14.48	25.80	112.40	57.07

Notes: Less than one day of stay is calculated as one day.

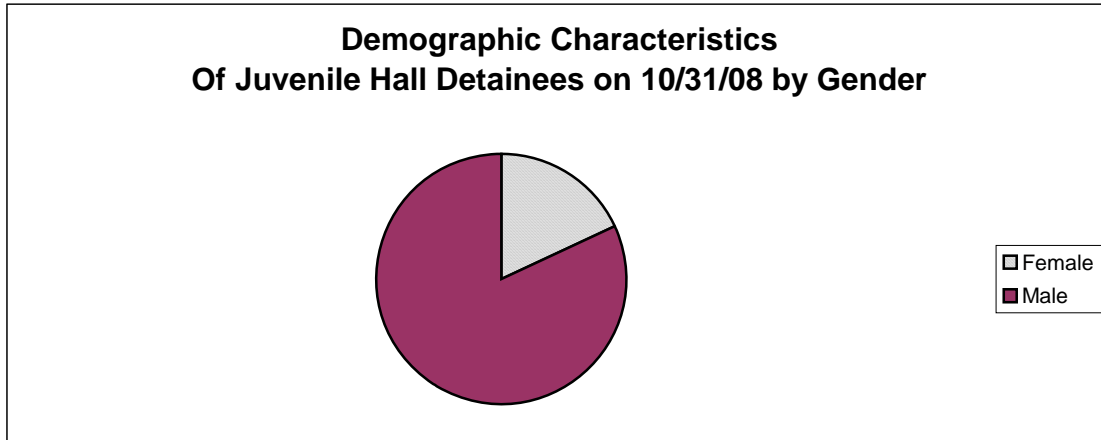
¹Length of stay is calculated according to release date for those who are released.

²For those still in custody, length of stay is calculated at the last day of the month.

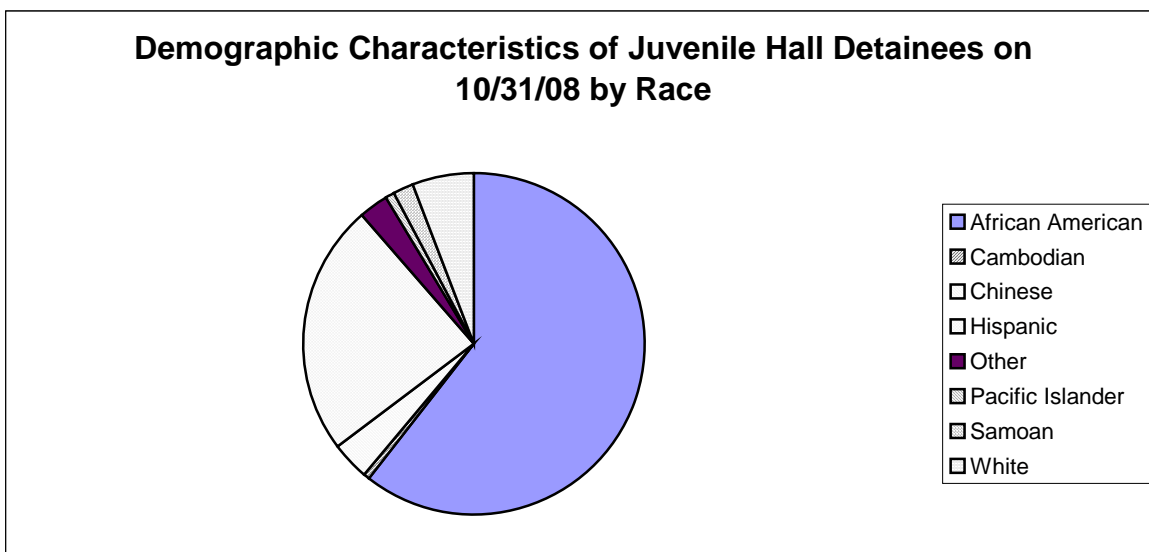
Section III

Demographics

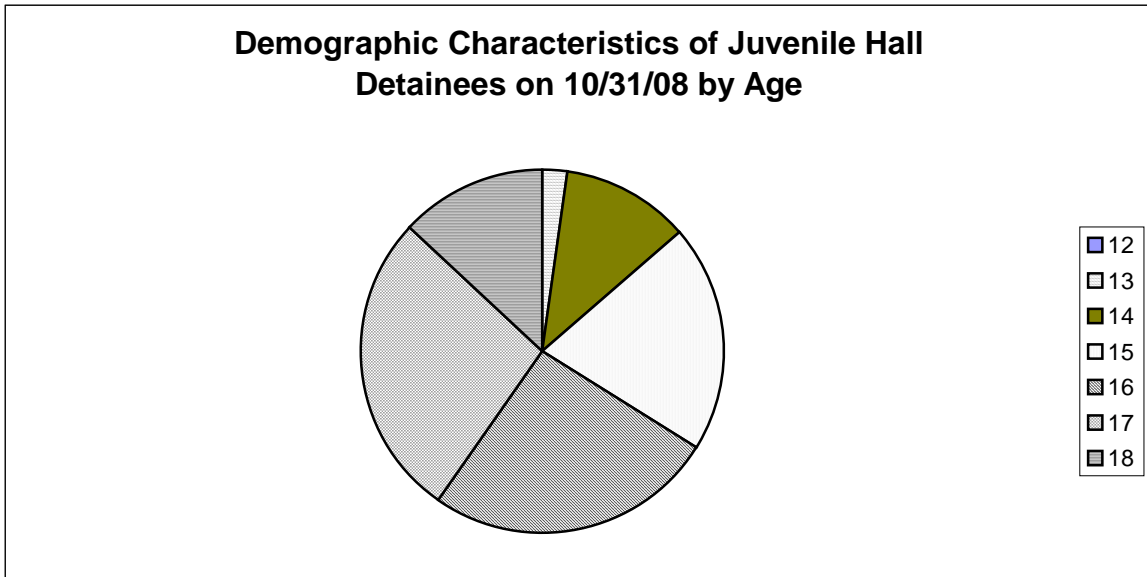
Gender	Frequency	Percent
Female	25	17.99%
Male	114	82.01%
Total	139	100.00%



Race/Ethnic Origin	Frequency	Percent
African American	84	60.43%
Cambodian	1	0.72%
Chinese	5	3.60%
Hispanic	33	23.74%
Other	4	2.88%
Pacific Islander	1	0.72%
Samoan	3	2.16%
White	8	5.76%
Total	139	100.00%

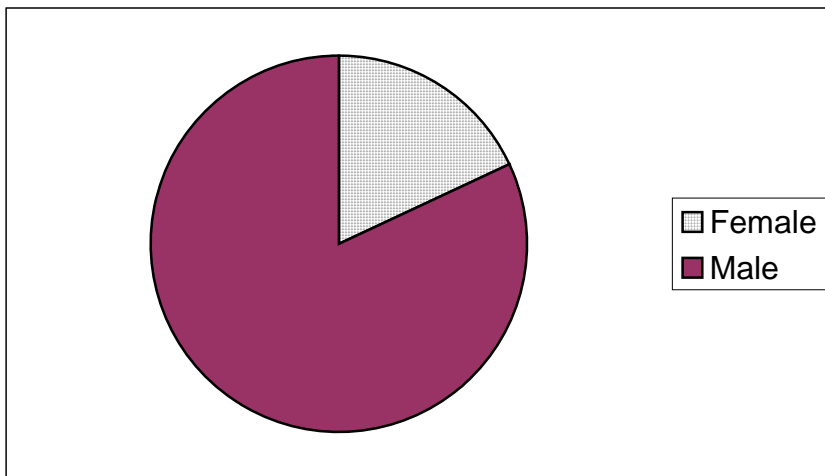


Age	Frequency	Percent
12	0	0.00%
13	3	2.16%
14	16	11.51%
15	28	20.14%
16	36	25.90%
17	38	27.34%
18	18	12.95%
Total	139	100.00%



Demographic Characteristics of Juvenile Hall Detainees
on 10/31/2008
Age by Gender

Age	Female	Male	Total	
11	0	0	0	0.00%
12	0	0	0	0.00%
13	2	1	3	2.16%
14	4	12	16	11.51%
15	6	22	28	20.14%
16	4	32	36	25.90%
17	7	31	38	27.34%
18 and over	2	16	18	12.95%
Total	25	114	139	100.00%
	17.99%	82.01%	100.00%	



Demographic Characteristics
Of Juvenile Hall Detainees on October 31st, 2008

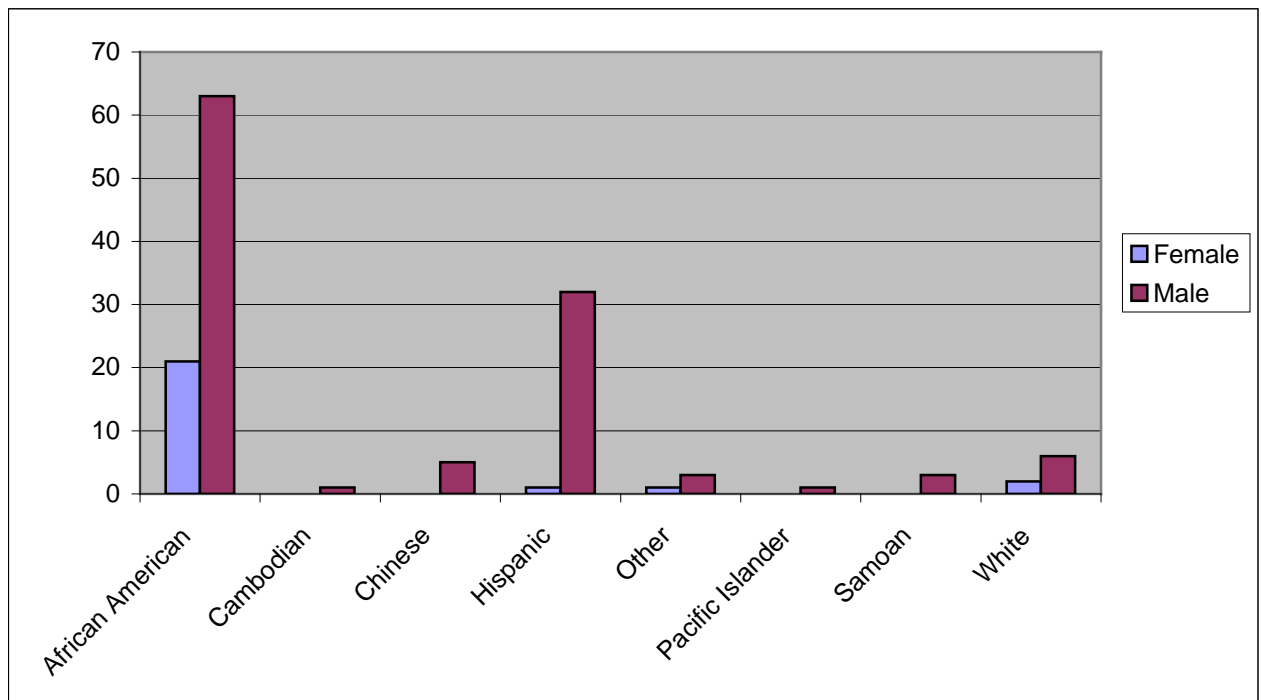
Geographic Residence of Youth	Count	%
Richmond	0	0.0%
Marina	2	1.4%
North of Market/Downtown	2	1.4%
Treasure Island/Yerba Buena Island	2	1.4%
Western Addition	13	9.4%
South of Market/Tenderloin	3	2.2%
Sunset	4	2.9%
Haight Ashbury/Castro/Upper Market	1	0.7%
Inner Mission	10	7.2%
Potrero	6	4.3%
Parkside	3	2.2%
Ingleside (West of Twin Peaks)	7	5.0%
Outer Mission	20	14.4%
Bayview	34	24.5%
Non-San Francisco and Unavailable	32	23.0%
Total	139	100.0%

Non-San Francisco and Unavailable	Count	%
American Canyon	1	3.1%
Antioch	1	3.1%
Berkeley	1	3.1%
Brentwood	1	3.1%
Daly City	6	18.8%
Foster City	1	3.1%
Honduras	4	12.5%
Marin City	1	3.1%
Oakland	1	3.1%
Pacifica	1	3.1%
Pine Bluff	1	3.1%
Redwood	1	3.1%
Richmond	2	6.3%
San Lorenzo	1	3.1%
Santa Ana	1	3.1%
Sausalito	1	3.1%
Sonoma	1	3.1%
South San Francisco	3	9.4%
Waterford	1	3.1%
Unavailable	2	6.3%
Total	32	100.0%

Demographic Characteristics
Of Juvenile Hall Detainees on October 31st, 2008

Race/Ethnic Origin by Gender

Race/Ethnicity	Female	Male	Total	%
African American	21	63	84	60.4%
Cambodian	0	1	1	0.7%
Chinese	0	5	5	3.6%
Hispanic	1	32	33	23.7%
Other	1	3	4	2.9%
Pacific Islander	0	1	1	0.7%
Samoan	0	3	3	2.2%
White	2	6	8	5.8%
Total	25	114	139	100.0%

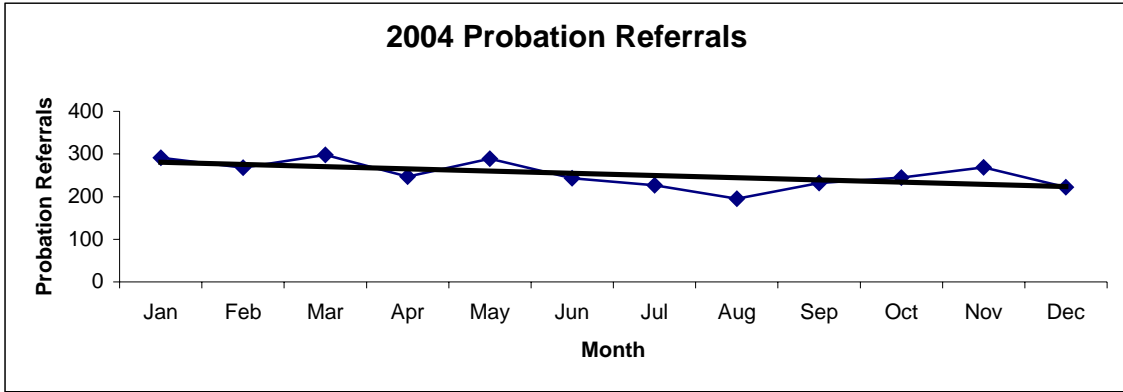


Section IV

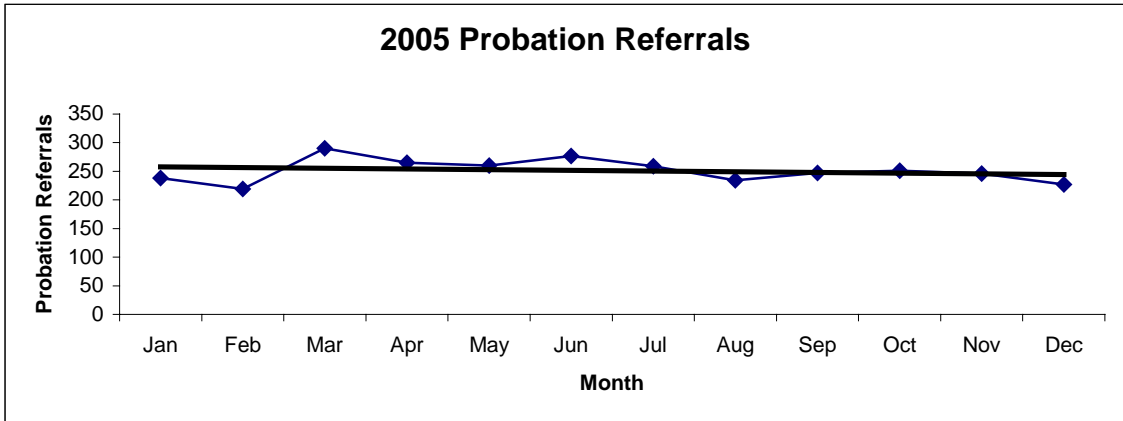
Historical Information

**San Francisco Juvenile Probation Department
 Probation Referrals (all sources) By Month
 (2004-2006)**

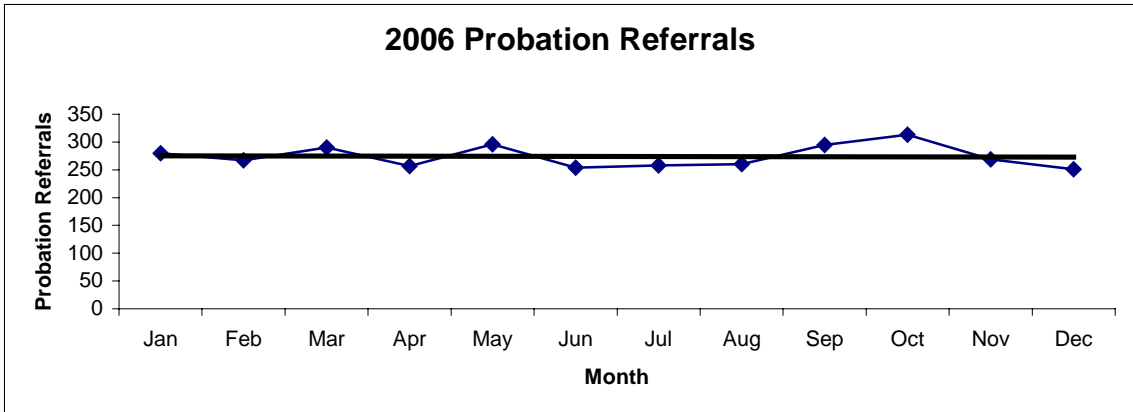
2004 Probation Referrals	Jan	Feb	Mar	Apr	May	Jun	Jul	Aug	Sep	Oct	Nov	Dec	Total
	291	268	298	247	289	243	227	195	232	245	269	222	3026



2005 Probation Referrals	Jan	Feb	Mar	Apr	May	Jun	Jul	Aug	Sep	Oct	Nov	Dec	Total
	238	219	290	265	260	277	259	234	247	251	246	227	3013

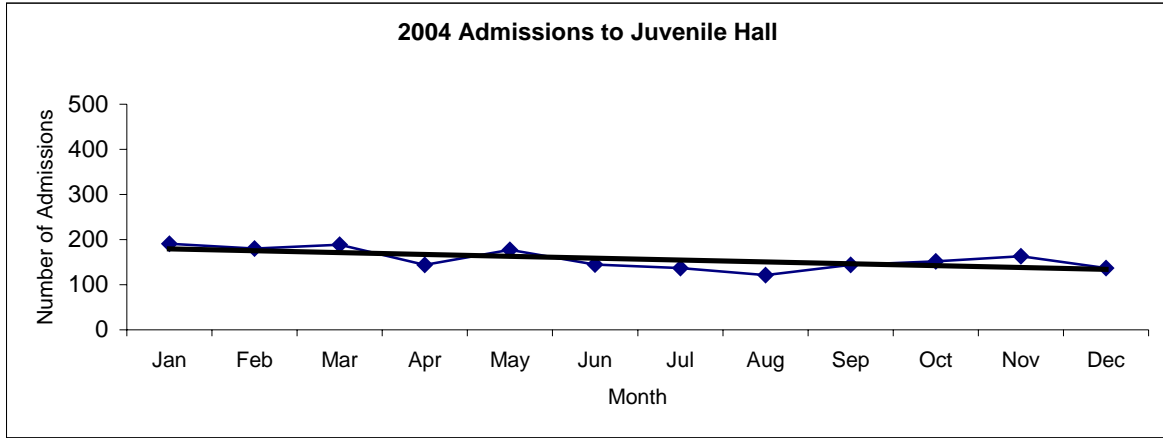


2006 Probation Referrals	Jan	Feb	Mar	Apr	May	Jun	Jul	Aug	Sep	Oct	Nov	Dec	Total
	280	267	290	257	296	254	258	260	295	313	269	251	3290

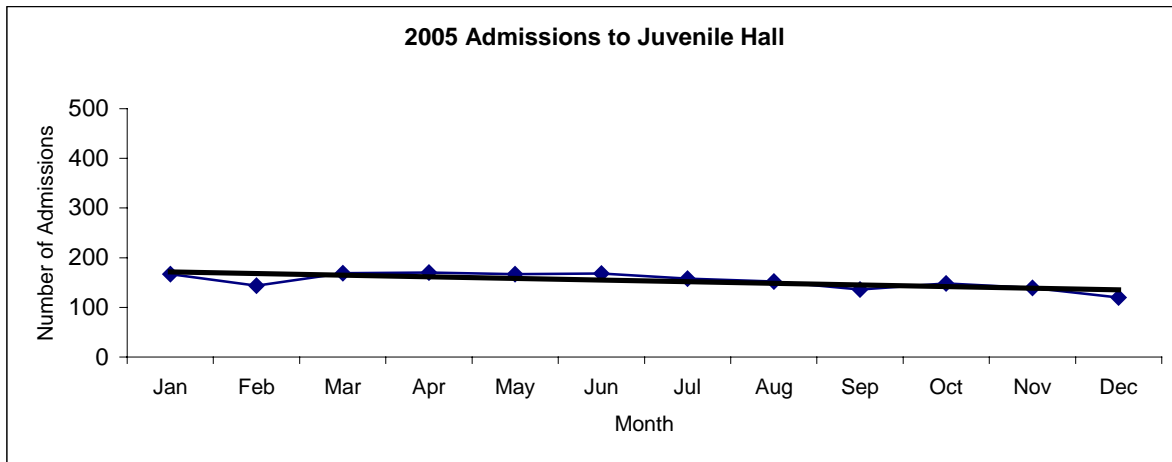


**San Francisco Juvenile Probation
Juvenile Hall Admissions By Month
(2004-2006)**

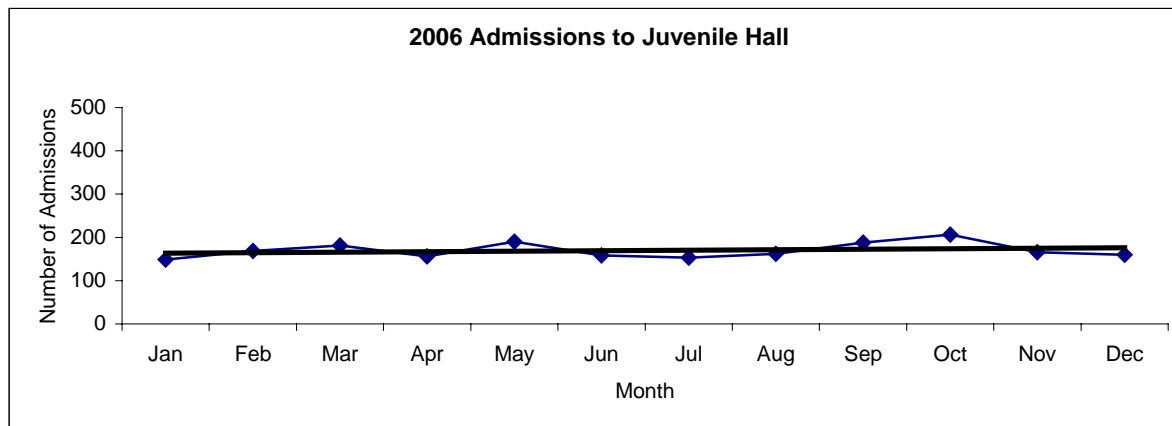
2004 Admissions	Jan	Feb	Mar	Apr	May	Jun	Jul	Aug	Sep	Oct	Nov	Dec	Total
	191	180	189	144	177	145	137	121	144	152	163	137	1880



2005 Admissions	Jan	Feb	Mar	Apr	May	Jun	Jul	Aug	Sep	Oct	Nov	Dec	Total
	167	144	169	170	167	168	158	152	136	148	139	120	1838

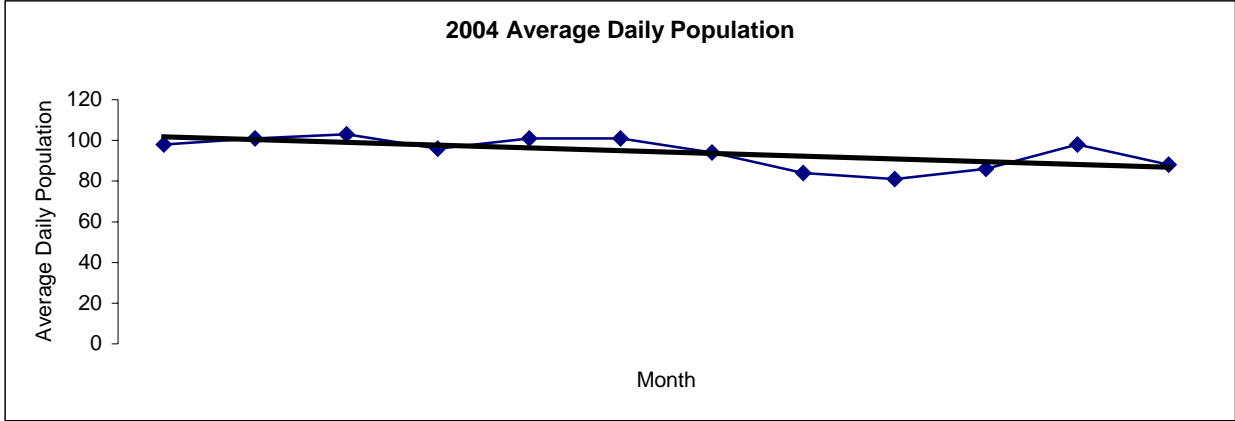


2006 Admissions	Jan	Feb	Mar	Apr	May	Jun	Jul	Aug	Sep	Oct	Nov	Dec	Total
	149	169	181	156	190	158	153	162	188	206	166	160	2038

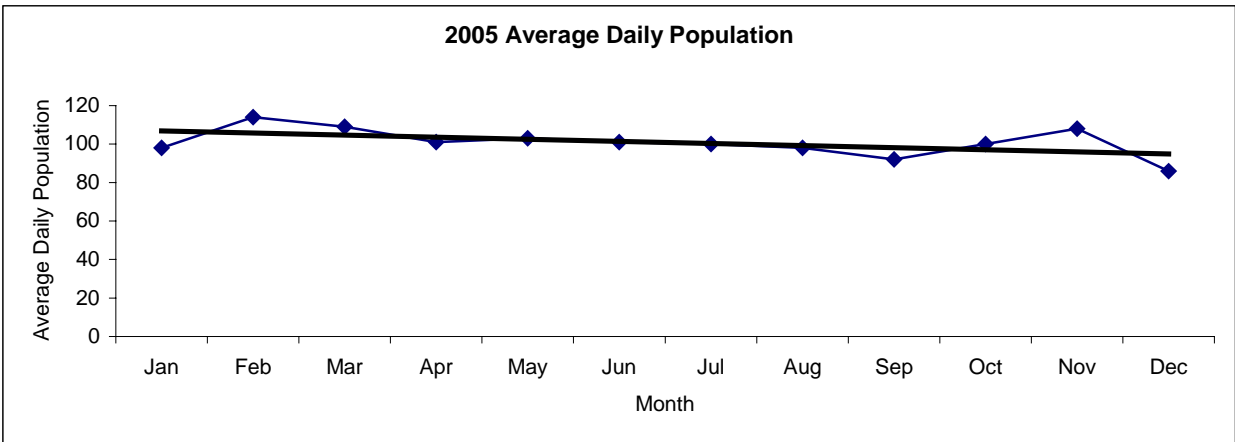


San Francisco Juvenile Probation
Juvenile Hall Average Daily Population By Month
 (2004-2006)

2004 Avg. Daily Pop.	Jan	Feb	Mar	Apr	May	Jun	Jul	Aug	Sep	Oct	Nov	Dec	Total
	98	101	103	96	101	101	94	84	81	86	98	88	94



2005 Avg. Daily Pop.	Jan	Feb	Mar	Apr	May	Jun	Jul	Aug	Sep	Oct	Nov	Dec	Total
	98	114	109	101	103	101	100	98	92	100	108	86	100



2006 Avg. Daily Pop.	Jan	Feb	Mar	Apr	May	Jun	Jul	Aug	Sep	Oct	Nov	Dec	Total
	81	90	100	99	111	112	107	104	104	128	122	119	106

