

City and County of San Francisco



Juvenile Probation Department

Monthly Report for September 2005

Presented to the Juvenile Probation Commission

October 26th, 2005

Prepared by Jose Luis Perla
Information Technology Director
(415) 753-7686
jose.perla@sfgov.org

Table of Contents

Section I Summary Reports

Juvenile Hall, Log Cabin Ranch Summary Statistics.....	1
Probation Services Summary and California Youth Authority Statistics	2
Active Cases by Unit and Special Services Statistics	3

Section II Current Month General Detail

Probation Referrals, Juvenile Admissions And Average Daily Population	4
Juvenile Hall Admissions and Average Daily Population.....	5
Commitments to out-of-home placement.....	6
Commitments to California Youth Authority.....	7
Log Cabin Ranch Admissions and Average Daily Population.....	8
Probation Referrals	9
Juvenile Hall And Log Cabin Ranch Incident Report	10
Bay Area Resident Juvenile Hall Comparison	11
Juvenile Hall Admissions.....	12
Juvenile Hall Detainees by Detention Reason.....	13
Juvenile Hall Average Daily Population by Rated Capacity.....	14
Juvenile Hall Average Length of Stay.....	15

Section III Demographics

Juvenile Hall Detainees by Sex and Race/Ethnic Origin.....	16
Juvenile Hall Detainees by Age	17
Juvenile Hall Detainees by Age and Sex.....	18
Juvenile Hall Detainees by Geographic Residence of Youth.....	19
Juvenile Hall Detainees by Race/Ethnic Origin and Sex.....	20

Section IV
Historical Information

2002-2004 Probation Referrals21
2002-2004 Juvenile Hall Admissions22
2002-2004 Juvenile Hall Average Daily Population.....23
2003-2004 Juvenile Hall Average Length of Stay by Month.....24



Section I

Summary Reports

Summary Report for the Month of September 2005

Juvenile Hall	<i>August 2004</i>	<i>August 2005</i>	<i>September 2004</i>	<i>September 2005</i>	<i>YTD 2004</i>	<i>YTD 2005</i>
Admissions	121	152	145	137	1432	1434
Average Daily Population	84	98	81	92	95	101
Average Length of Stay (Releases)	19.52	22.16	22.55	20.49	17.60	24.66
Average Length of Stay (In Custody)	67.37	40.25	60.14	38.38	59.38	48.86
Releases	133	160	150	135	1438	1421
Log Cabin Ranch						
Admissions:						
First Time Commitments	1	3	2	2	19	24
Recommitments	0	0	0	0	0	1
<i>Total</i>	1	3	2	2	19	25
Releases:						
Graduated	3	1	1	0	21	12
Escape	0	0	0	0	0	0
Other releases	0	2	2	0	4	11
<i>Total</i>	3	3	3	0	25	23
Average Daily Population	14	16	13	18	16	15
Incident Reports						
Juvenile Hall	6	18	5	9	95	112
Log Cabin Ranch	5	0	0	0	10	2
<i>Total</i>	11	18	5	9	105	114

Summary Report for the Month of September 2005

Probation Services	<i>August 2005</i>	<i>September 2005</i>	<i>Year To Date 2005</i>
Probation Referrals	227	224	2116
Petitions	110	125	1059
Selected Court Dispositions:			
California Youth Authority	2	0	6
Log Cabin Ranch	2	1	18
Out of Home Placement	23	15	157
Ward Probation	34	34	277
Violation of Probation Petitions Filed	12	11	171
California Youth Authority Monthly Count San Francisco County Juvenile Court Cases September 30th, 2005			
Category	Institutions	Parole	
Males			
White	3	1	
Hispanic	2	10	
African American	20	12	
Asian	0	3	
Native American	0	0	
Filipino	0	0	
Pacific Islander	2	1	
Other	0	0	
Total	27	27	
Females			
White	0	0	
Hispanic	1	2	
African American	2	0	
Asian	0	0	
Native American	0	0	
Filipino	0	0	
Pacific Islander	0	0	
Other	0	0	
Total	3	2	
Grand Total	30	29	

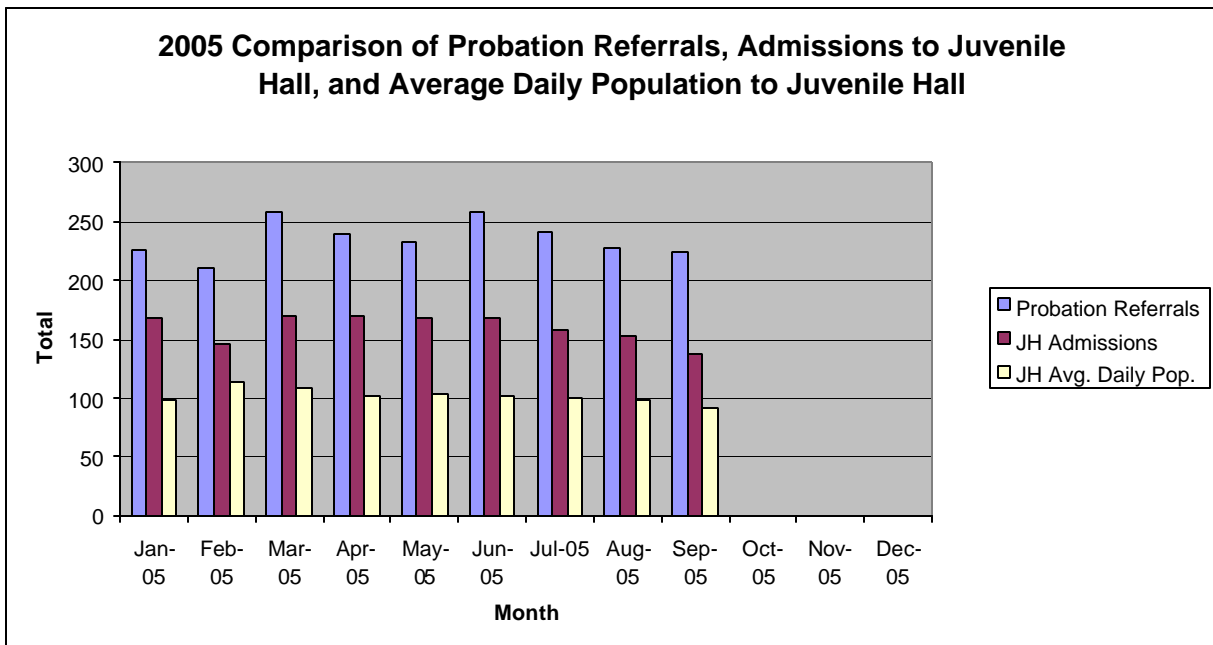
Summary Report for the Month of September 2005

Probation Services			
Active Cases by Units	August 2005	September 2005	September Average # Youth by PO
CARC	154	176	176
Custody Screening Investigation	164	189	23
Probation Services 1	366	371	30
Probation Services 2	207	196	16
Probation Services 3	162	154	22
Probation Services 4	287	282	28
YTEC	20	12	12
Special Services	43	46	11
<i>Total</i>	1403	1426	39
Special Services Unit	New	Closed	Active at end of Month
Record Sealings	7	6	183
Stepparent Adoptions	1	1	54
Terminations	1	0	13
Marriage Consents	1	2	2
Custody Evaluations	0	0	0
	Entered	Completed	Active at end of Month
Community Service	17	11	1300
		Referred	Completed at end of Month
Street Law (still in session)		21	0
Theft Awareness (next class 10/1/05)		0	0
Anger Management for boys (still in session)		15	0
Anger Management for girls (still in session)		6	0
Life Management Skills		3	2
Kids Turn Non-Violent Family Skills (still in session)		11	0
Information, Record Checks, Research & Photo Copying Juvenile Records For:	June 2005	July 2005	Year to Date 2005
Job Corps, Probation Departments, Military, Law Enforcement,			
Misc., (letters, Memos, Forms, etc.)	114	157	1096

Section II
Current Month
General Detail

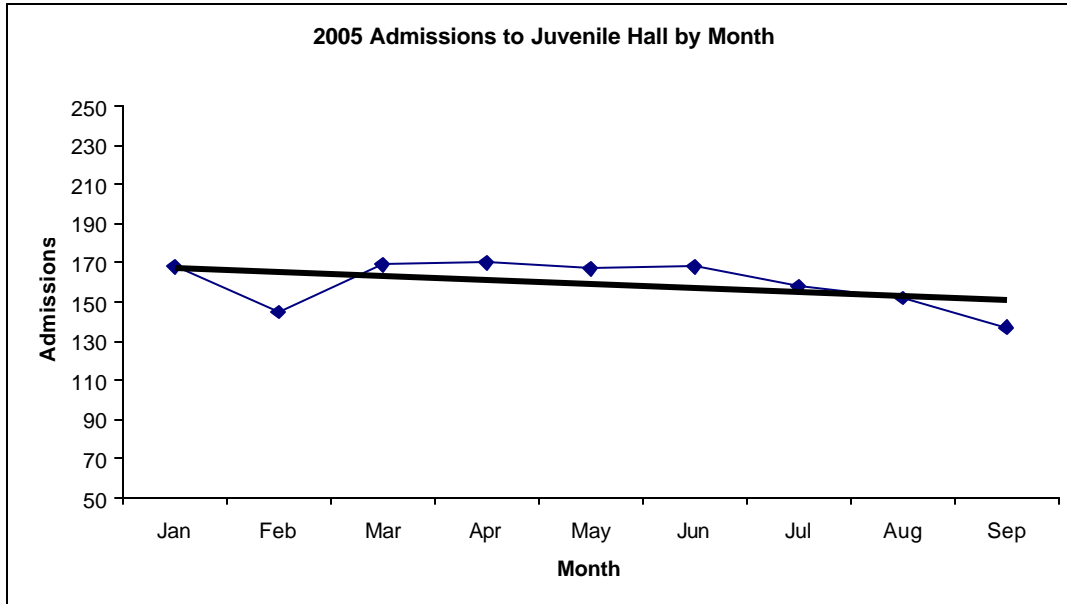
San Francisco Juvenile Probation

	Jan-05	Feb-05	Mar-05	Apr-05	May-05	Jun-05	Jul-05	Aug-05	Sep-05	Oct-05	Nov-05	Dec-05
Probation Referrals	226	210	258	240	232	258	241	227	224			
JH Admissions	168	145	169	170	167	168	158	152	137			
JH Avg. Daily Pop.	98	114	109	101	103	101	100	98	92			

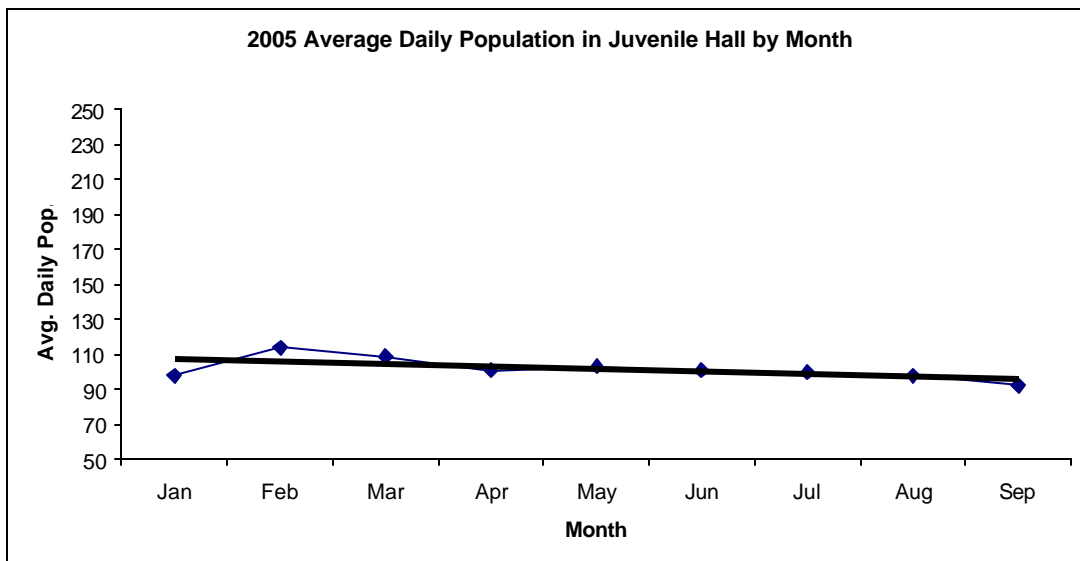


San Francisco Juvenile Probation Admissions and Average Daily Population In Juvenile Hall (Calendar Year 2005)

Admissions	Jan	Feb	Mar	Apr	May	Jun	Jul	Aug	Sep	Oct	Nov	Dec	Total
2005	168	145	169	170	167	168	158	152	137				1434



Avg. Daily Pop.	Jan	Feb	Mar	Apr	May	Jun	Jul	Aug	Sep	Oct	Nov	Dec	Total
2005	98	114	109	101	103	101	100	98	92				102

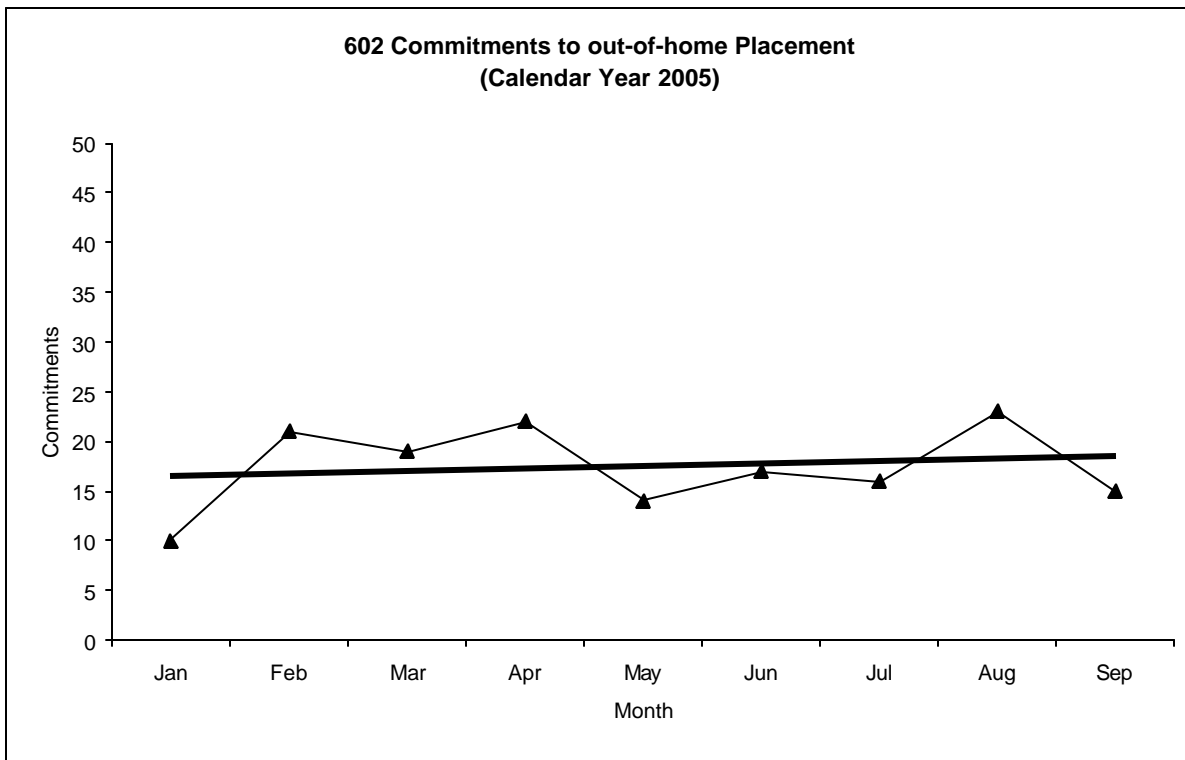


Out-of-Home Placement¹

Commitments of 602's

Calendar Year 2005

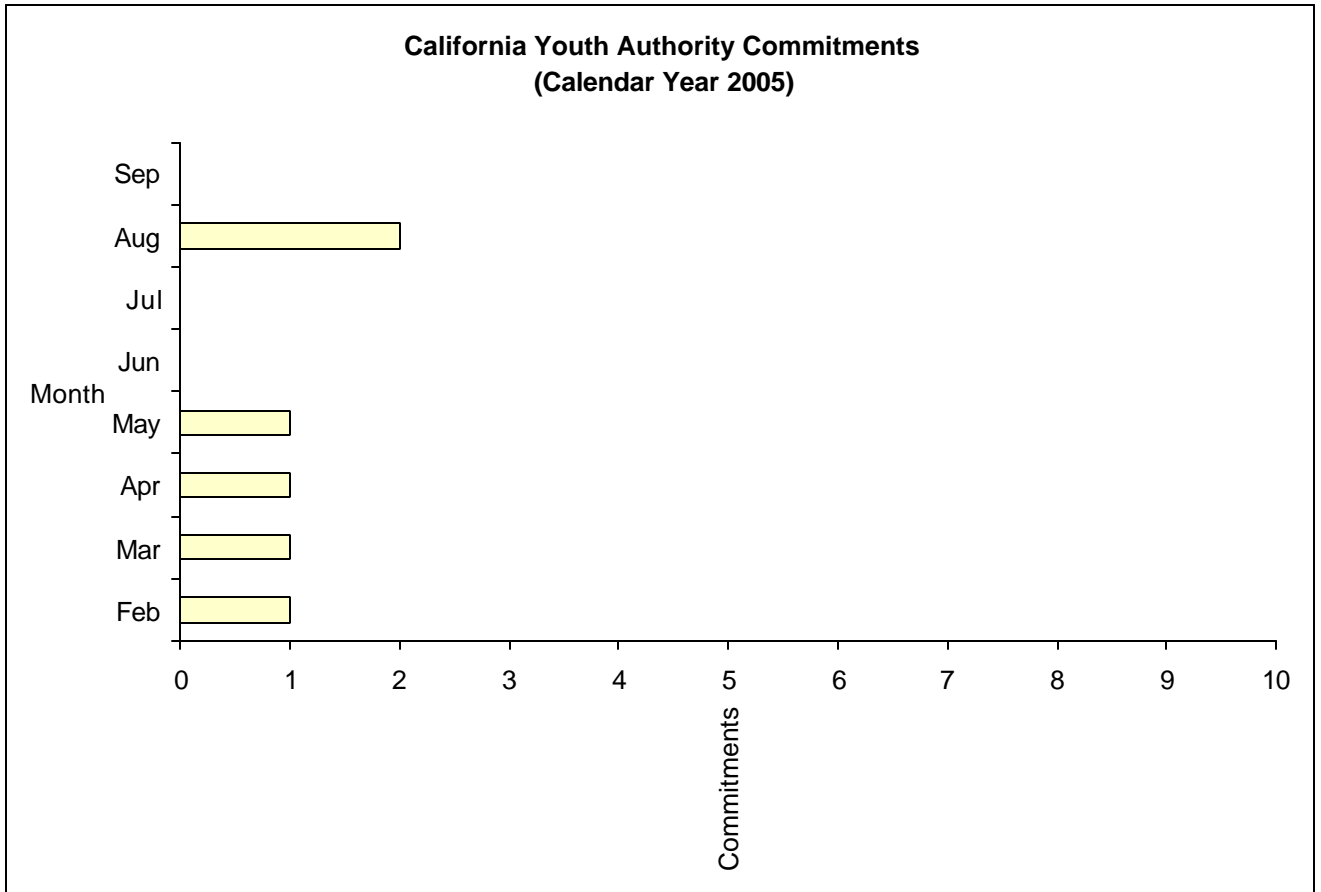
Commitments	Jan	Feb	Mar	Apr	May	Jun	Jul	Aug	Sep	Oct	Nov	Dec	Total
2005	10	21	19	22	14	17	16	23	15				157



¹ This report is based on 602 Commitments to out-of-home placements. If there is a 601 commitment, it will show as a footnote here. Figures are regularly updated to include reports from previous reporting periods.

California Youth Authority Commitments (Calendar Year 2005)

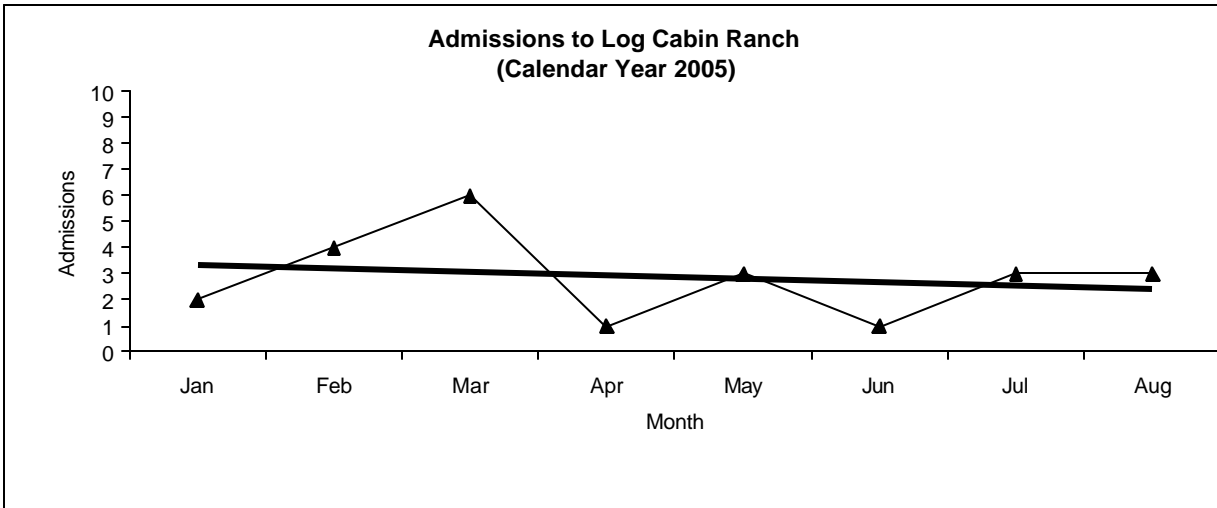
Commitments	Jan	Feb	Mar	Apr	May	Jun	Jul	Aug	Sep	Oct	Nov	Dec	Total
2005	0	1	1	1	1	0	0	2	0				6



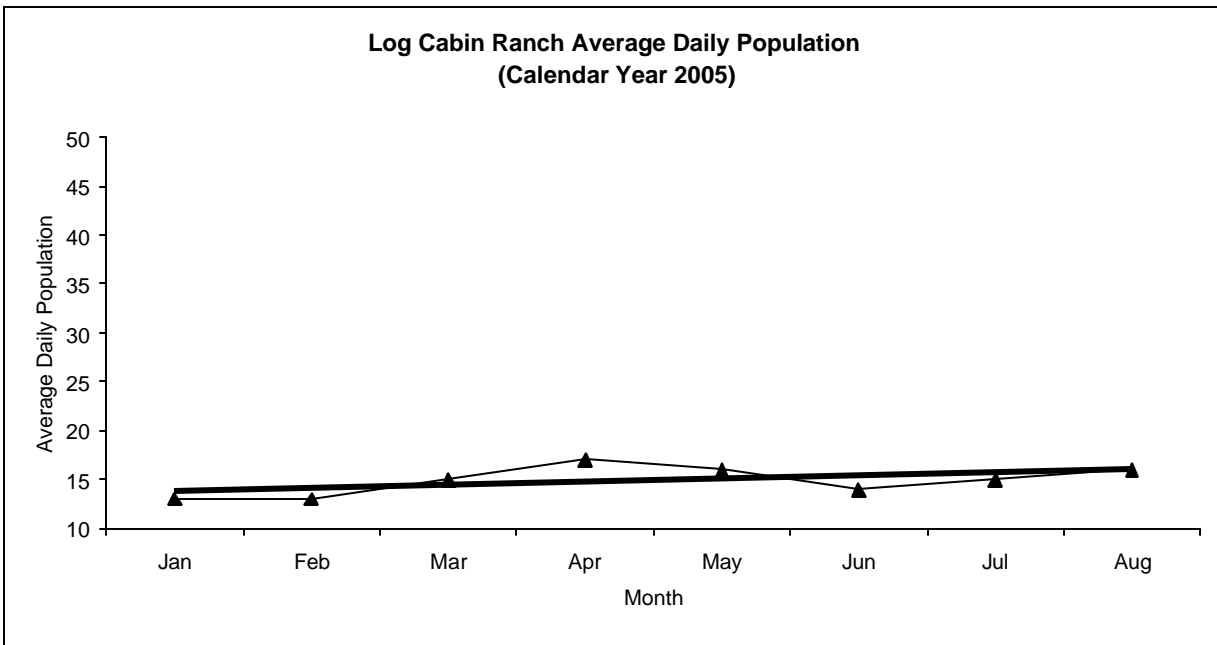
Log Cabin Ranch

Admissions and Average Daily Population (Calendar Year 2005)

Admissions	Jan	Feb	Mar	Apr	May	Jun	Jul	Aug	Sep	Oct	Nov	Dec	Total
2005	2	4	6	1	3	1	3	3	2				25



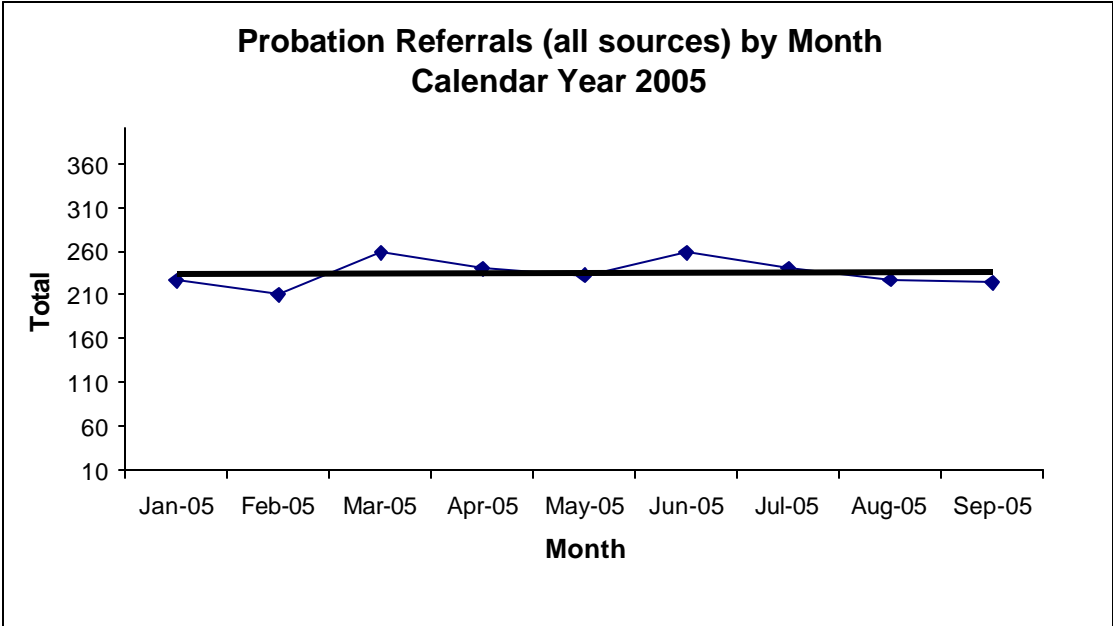
Avg. Daily Pop.	Jan	Feb	Mar	Apr	May	Jun	Jul	Aug	Sep	Oct	Nov	Dec	Total
2005	13	13	15	17	16	14	15	16	18				15.22



Probation Referrals by Month Calendar Year 2005

Probation Referrals (all sources) by Month (602 W&I)

Jan-05	226
Feb-05	210
Mar-05	258
Apr-05	240
May-05	232
Jun-05	258
Jul-05	241
Aug-05	227
Sep-05	224
Oct-05	
Nov-05	
Dec-05	

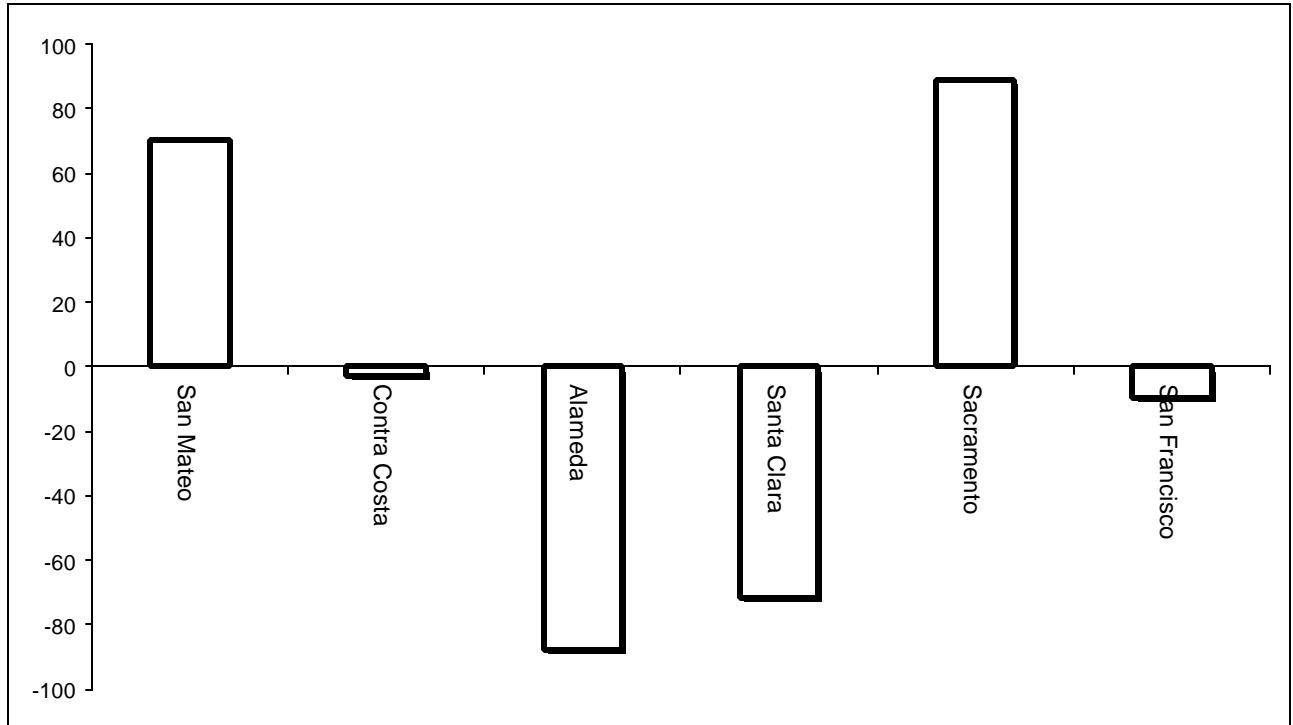


SAN FRANCISCO JUVENILE PROBATION DEPARTMENT
 MONTHLY INCIDENT REPORT FORM
 MONTH/YEAR: SEPTEMBER 2005

Log Cabin Ranch	Battery on Staff	Injury to Staff due to Restraint of Minor	Fight	Battery Youth on Youth	Attempted Escape	AWOL	Attempted Suicide	Serious Contraband (Weapon Illegal Drug)
	0	0	0	0	0	0	0	0
	Battery on Staff with Injury	Fire	Fight with Injury	Battery Youth on Youth with Injury	Escape	Death	Suicide	Major Property Destruction
0	0	0	0	0	0	0	0	0
Juvenile Hall	Battery on Staff	Injury to Staff due to Restraint of Minor	Fight	Battery Youth on Youth	Attempted Escape	AWOL	Attempted Suicide	Serious Contraband (Weapon Illegal Drug)
	0	4	3	1	0	0	0	0
	Battery on Staff with Injury	Fire	Fight with Injury	Battery Youth on Youth with Injury	Escape	Death	Suicide	Major Property Destruction
0	0	1	0	0	0	0	0	0

Bay Area Resident Juvenile Hall Comparison Over/Under Capacity

on October 3rd, 2005

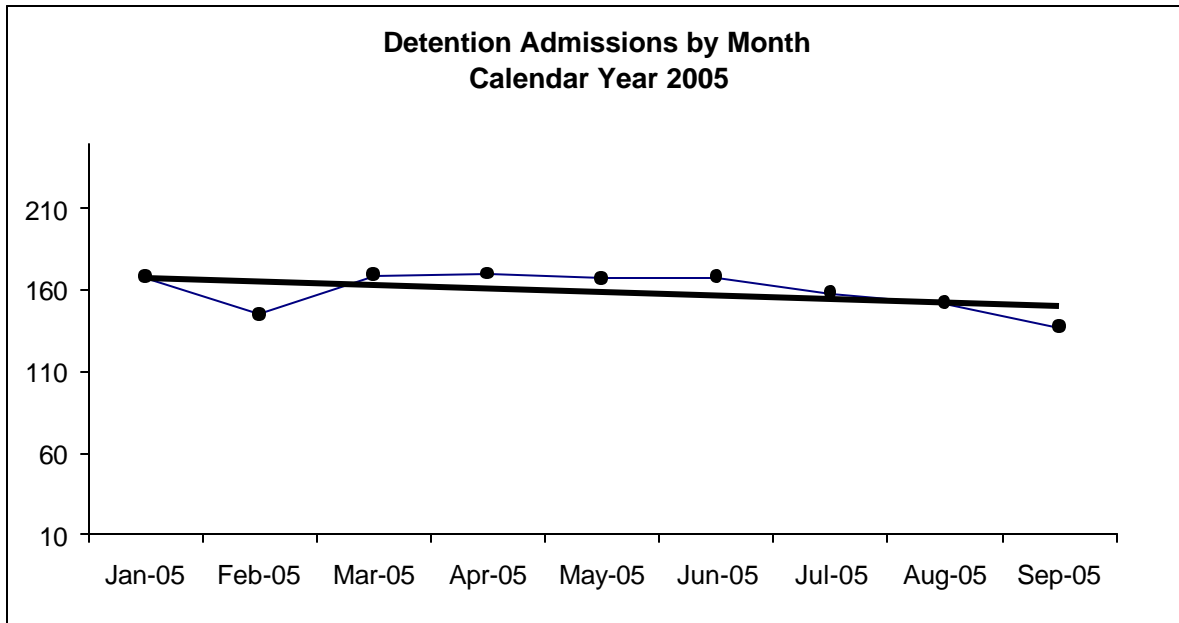


	Rated Capacity	Actual	Over/Under Capacity
San Mateo	130	200	70
Contra Costa	160	157	-3
Alameda	288	200	-88
Santa Clara	329	257	-72
Sacramento	256	345	89
San Francisco	104	94	-10

Juvenile Hall Admissions by Month Calendar Year 2005

Detention Admissions by Month

Jan-05	168
Feb-05	145
Mar-05	169
Apr-05	170
May-05	167
Jun-05	168
Jul-05	158
Aug-05	152
Sep-05	137
Oct-05	
Nov-05	
Dec-05	

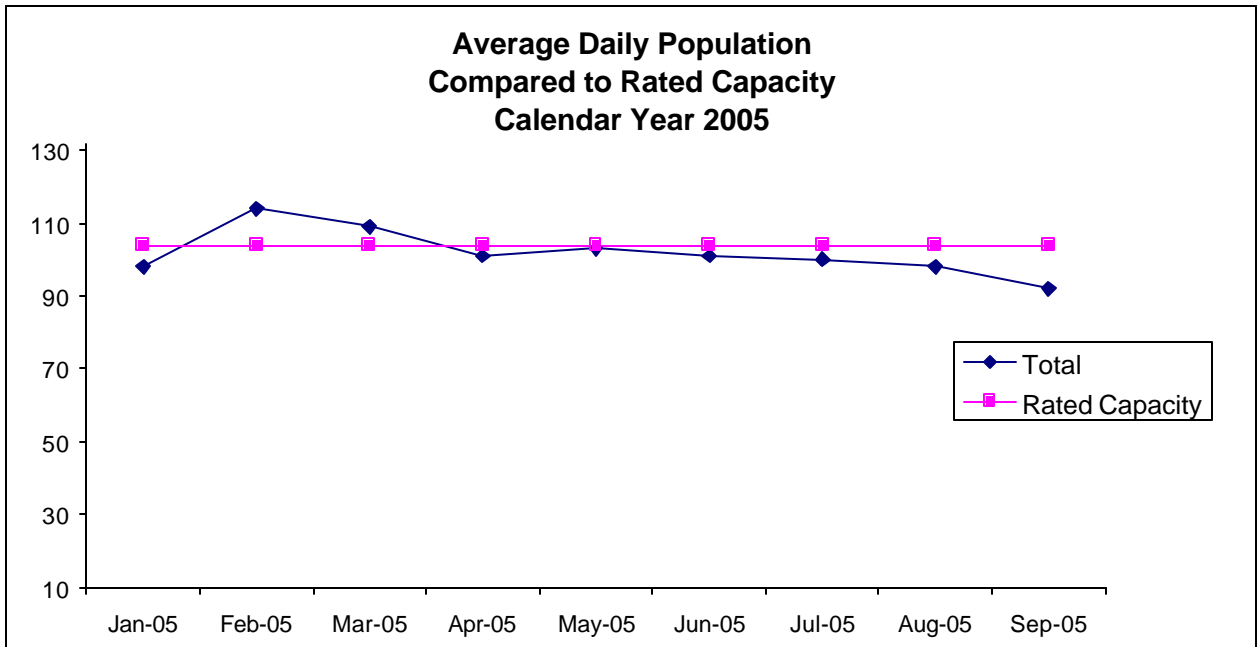


**Characteristics of Juvenile Hall Detainees on September 30th, 2005
Using CJIS Code From the Department of Justice**

Detention Reason	Offense Code	MF*	Count	%
ATTEMPTED MURDER:SECOND DEGREE ON PEACE OFFICER	664 /187 (A) PC	F	3	3.16%
RAPE OF DRUGGED VICTIM	261 (A)(3) PC	F	1	1.05%
RAPE:VICTIM INCAPABLE OF GIVING CONSENT	261 (A)(1) PC	F	1	1.05%
LEWD OR LASCIVIOUS ACTS W/CHILD UNDER 14 YEARS	288 (A) PC	F	1	1.05%
CARJACKING	215 PC	F	1	1.05%
ARSON:INHABITED STRUCTURE/PROPERTY	451 (B) PC	F	1	1.05%
ROBBERY	212.5 PC	F	5	5.26%
ADW/LIKELY GBI ON SCHOOL EMPLOYEE:NOT FIREARM	245.5(A) PC	F	1	1.05%
TRANSPORT/SELL NARCOTIC/CONTROLLED SUBSTANCE	11352 (A) HS	F	3	3.16%
POSSESS/PURCHASE COCAINE BASE FOR SALE	11351.5 HS	F	1	1.05%
BURGLARY:FIRST DEGREE	459 PC	F	3	3.16%
ROBBERY:SECOND DEGREE	212.5(C) PC	F	21	22.11%
POSSESS/PURCHASE FOR SALE NARCOTIC/CONTROLLED SUBSTANCE	11351 HS	F	1	1.05%
SEXUAL BATTERY	243.4(A) PC	F	1	1.05%
INFLICT CORPORAL INJURY ON SPOUSE/COHABITANT	273.5 PC	F	1	1.05%
ASSAULT:DEADLY WEAPON OR FORCE:POSSIBLE GREAT BODILY INJ	245 (A) PC	F	1	1.05%
FORCE OR ADW NOT FIREARM:GBI LIKELY	245 (A)(1) PC	F	5	5.26%
BATTERY W/SERIOUS BODILY INJURY	243 (D) PC	F	1	1.05%
SODOMY W/PERSON UNDER 18 YEARS	286 (B)(1) PC	F	1	1.05%
TAKE VEHICLE W/O OWNER'S CONSENT/VEHICLE THEFT	10851 (A) VC	F	2	2.11%
RECEIVE/ETC KNOWN STOLEN PROPERTY	496 (A) PC	F	1	1.05%
CARRY CONCEALED WEAPON ON PERSON W/PRIOR CONVICTION	12025 (A)(2) PC	F	1	1.05%
CARRY LOADED FIREARM IN PUBLIC UNDER SPECIFIC CIRCUMSTANCES	12031 (A)(1) PC	F	1	1.05%
CARRY LOADED FIREARM:PROHIBITED/ETC	12031 (A)(2)(D) PC	F	1	1.05%
MINOR ILLEGALLY POSSESS CONCEALED WEAPON WITH PRIOR	12101 (A)(1) PC	F	1	1.05%
OBSTRUCT/RESIST/ETC PUBLIC/PEACE OFFICER/EMERGENCY MED TECH	148 (A)(1) PC	M	1	1.05%
BATTERY ON PEACE OFFICER/EMERGENCY PERSONNEL/ETC	243 (B) PC	M	1	1.05%
BATTERY ON SCHOOL EMPLOYEE	243.6 PC	M	1	1.05%
LOITER:INTENT:PROSTITUTION	653.22(A) PC	M	1	1.05%
FAIL TO OBEY ORDER OF JUVENILE COURT 602 WI	777 (A)(2) WI	M	2	2.11%
VIOLATION(S) OF HOME SUPERVISION CONDITION	628.1 WI	M	2	2.11%
CHANGE OF PLACEMENT/PLACEMENT FAILURE	737 WI	M	6	6.32%
COURT ORDER 602	CTORD 602		9	9.47%
BENCH WARRANT	BENCH WARRANT		5	5.26%
WARRANT 602	WRNT602		5	5.26%
WARRANT FROM ANOTHER COUNTY	WRNTOC		1	1.05%
CYA HOLD	CYA HOLD		1	1.05%
*M = Misdemeanor; F = Felony		Total	95	100.00%

**Average Daily Population
By Rated Capacity
Calendar Year 2005**

	Total	Rated Capacity
Jan-05	98	104
Feb-05	114	104
Mar-05	109	104
Apr-05	101	104
May-05	103	104
Jun-05	101	104
Jul-05	100	104
Aug-05	98	104
Sep-05	92	104
Oct-05		104
Nov-05		104
Dec-05		104



Juvenile Hall Average Length of Stay

For the Month of September 2005

¹Released

Range of Days	<i>1-10 days</i>	<i>11-20 days</i>	<i>21-30 days</i>	<i>30 or more days</i>	Total
# of Youth Released	74	20	19	22	135
% of Population	54.81%	14.81%	14.07%	16.30%	100%
# of Days	288	299	482	1697	2766
% of Total Days	10.41%	10.81%	17.43%	61.35%	100%
Average Length of Stay	3.89	14.95	25.37	77.14	20.49

²In Custody

Range of Days	<i>1-10 days</i>	<i>11-20 days</i>	<i>21-30 days</i>	<i>30 or more days</i>	Total
# of Youth Detained	30	16	11	38	95
% of Population	31.58%	16.84%	11.58%	40.00%	100%
# of Days	143	214	272	3017	3646
% of Total Days	3.92%	5.87%	7.46%	82.75%	100%
Average Length of Stay	4.77	13.38	24.73	79.39	38.38

Notes: Less than one day of stay is calculated as one day.

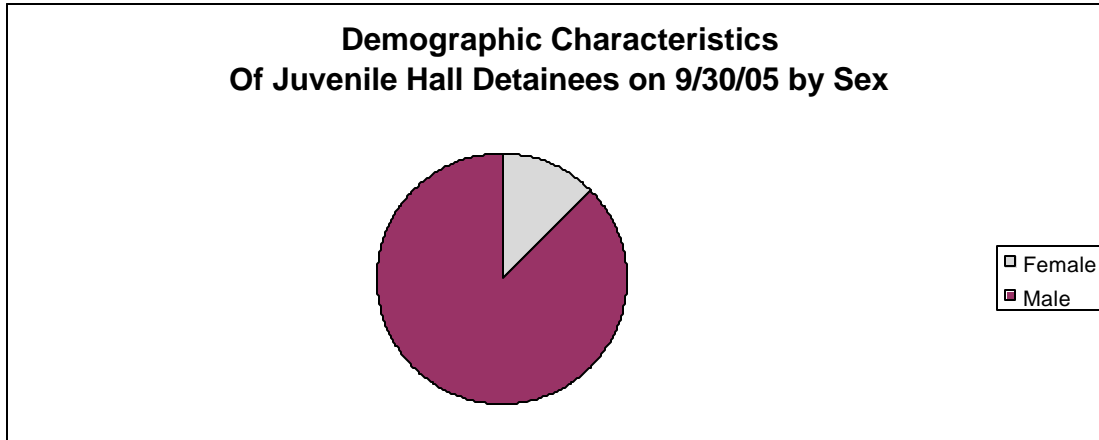
¹Length of stay is calculated according to release date for those who are released.

²For those still in custody, length of stay is calculated at the last day of the month.

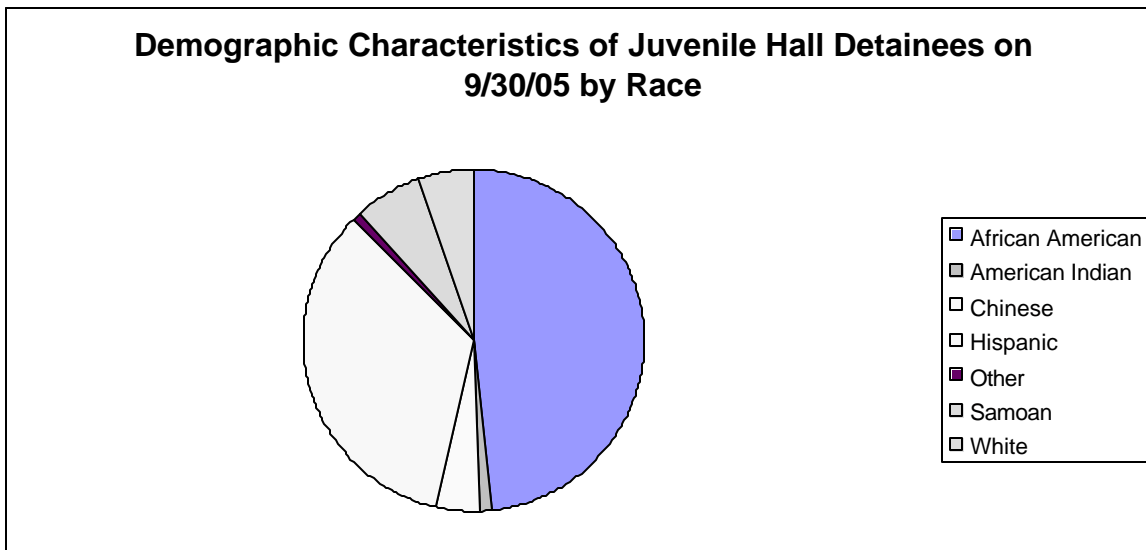
Section III

Demographics

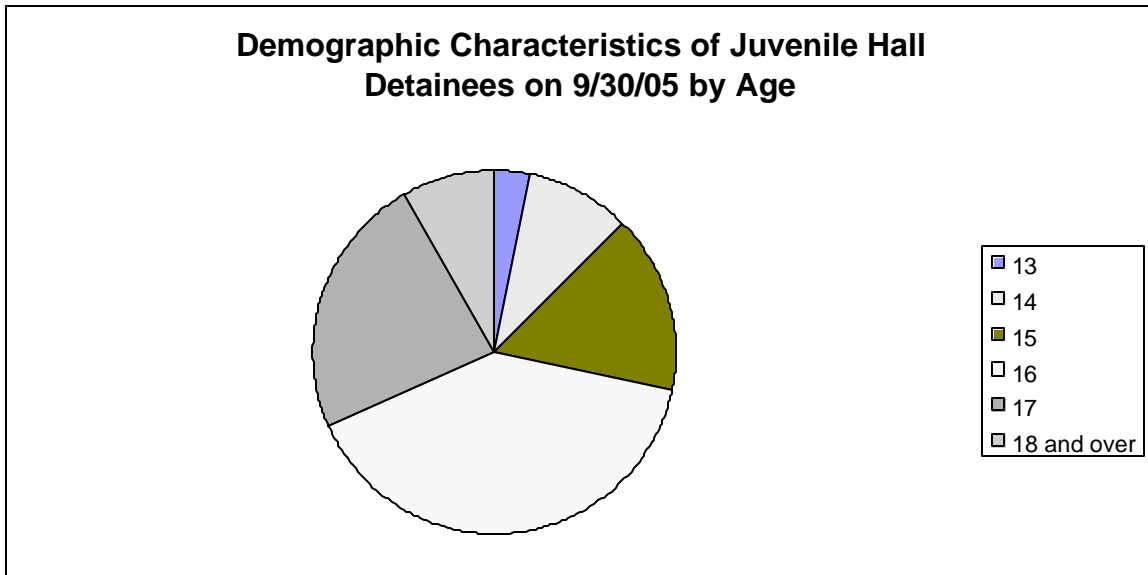
Sex	Frequency	Percent
Female	12	12.63%
Male	83	87.37%
Total	95	100.00%



Race/Ethnic Origin	Frequency	Percent
African American	46	48.42%
American Indian	1	1.05%
Chinese	4	4.21%
Hispanic	32	33.68%
Other	1	1.05%
Samoan	6	6.32%
White	5	5.26%
Total	95	100.00%

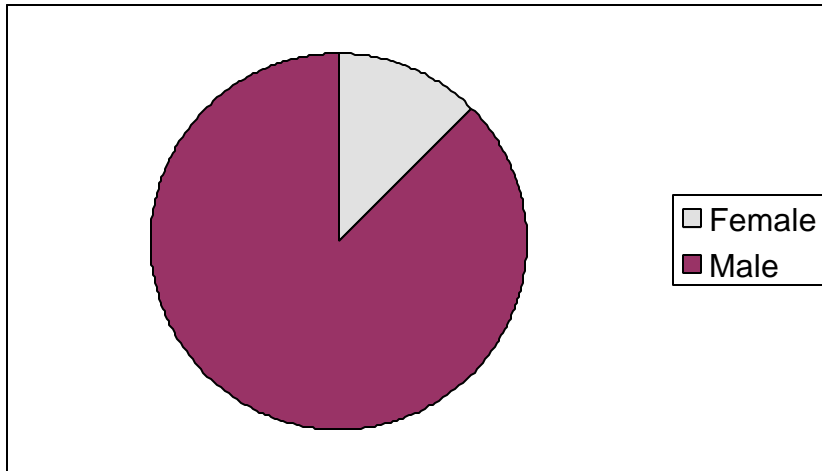


Age	Frequency	Percent
13	3	3.16%
14	9	9.47%
15	15	15.79%
16	38	40.00%
17	22	23.16%
18 and over	8	8.42%
Total	95	100.00%



Demographic Characteristics of Juvenile Hall Detainees
on 9/30/2005
Age by Sex

Age	Female	Male	Total	
13	0	3	3	3.16%
14	0	9	9	9.47%
15	1	14	15	15.79%
16	7	31	38	40.00%
17	3	19	22	23.16%
18 and over	1	7	8	8.42%
Total	12	83	95	100.00%
	12.63%	87.37%	100.00%	



Demographic Characteristics
Of Juvenile Hall Detainees on September 30th, 2005

Geographic Residence of Youth	Frequency	Percent
Richmond	2	2.1
North of Market/Downtown	2	2.1
Western Addition	11	11.6
South of Market/Tenderloin	5	5.3
Haight Ashbury/Castro	1	1.1
Inner Mission	5	5.3
Ingleside (West of Twin Peaks)	2	2.1
Outer Mission	19	20.0
Bayview	26	27.4
Non-San Francisco and Unavailable*	22	23.2
	-----	-----
Total	95	100.0

*Non-San Francisco and Unavailable	Frequency	Percent
AMERICAN CANYON	1	4.5
ANTIOCH	1	4.5
DALY CITY	2	9.1
HONDURAS	1	4.5
LAS VEGAS	1	4.5
MARKLEEVILLE	1	4.5
NAPA	1	4.5
OAKLAND	1	4.5
ORANGEVALE	1	4.5
PACIFICA	1	4.5
PITTSBURG	1	4.5
RICHMOND	1	4.5
SACRAMENTO	1	4.5
SAN BRUNO	1	4.5
SAN LEANDRO	1	4.5
TRUCKEE	1	4.5
UNAVAILABLE	5	22.7
	-----	-----
Total	22	100.0

Demographic Characteristics
Of Juvenile Hall Detainees on September 30th, 2005

Race/Ethnic Origin by Sex

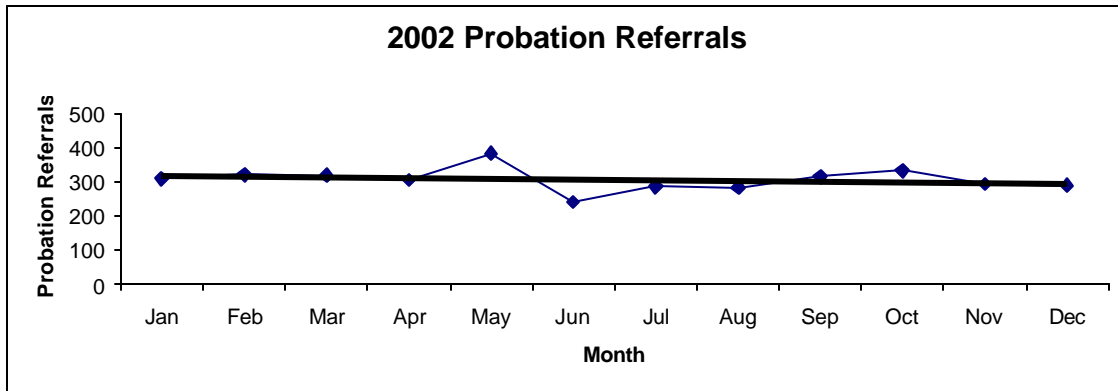
Count	SEX		Row Total
	Female F	Male M	
RACE			
AFRICAN AMERICAN	4	42	46 48.4
CHINESE		4	4 4.2
HISPANIC	4	28	32 33.7
AMERICAN INDIAN		1	1 1.1
OTHER		1	1 1.1
SAMOAN	1	5	6 6.3
WHITE	3	2	5 5.3
Column Total	12 12.6	83 87.4	95 100.0

Section IV

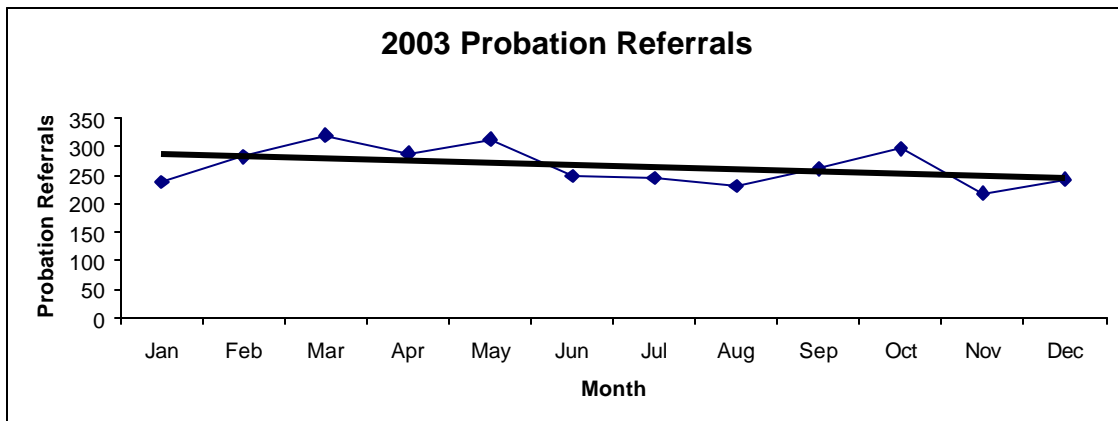
Historical Information

San Francisco Juvenile Probation
Probation Referrals (all sources) By Month
 (2002-2004)

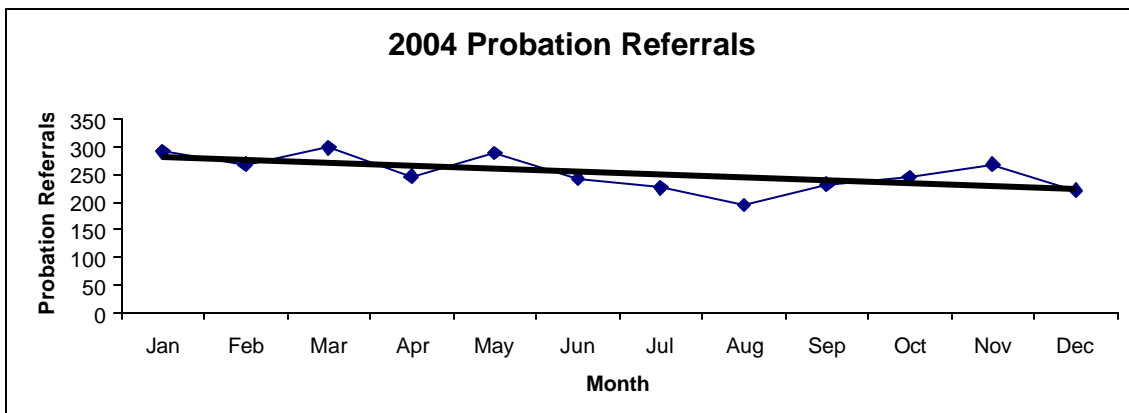
2002 Probation Referrals	Jan	Feb	Mar	Apr	May	Jun	Jul	Aug	Sep	Oct	Nov	Dec	Total
	308	320	318	305	384	240	286	283	315	333	294	289	3675



2003 Probation Referrals	Jan	Feb	Mar	Apr	May	Jun	Jul	Aug	Sep	Oct	Nov	Dec	Total
	238	283	320	288	313	248	245	231	261	297	218	243	3185

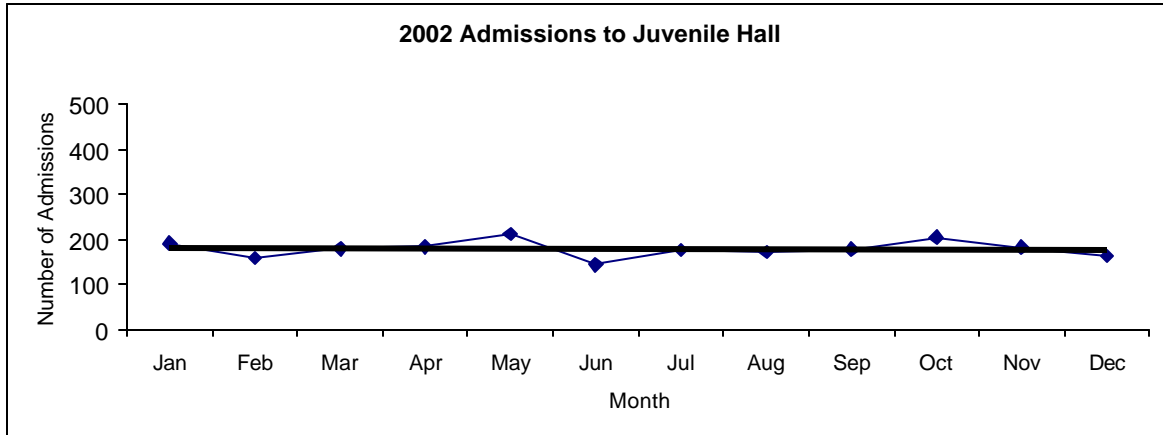


2004 Probation Referrals	Jan	Feb	Mar	Apr	May	Jun	Jul	Aug	Sep	Oct	Nov	Dec	Total
	291	268	298	247	289	243	227	195	232	245	269	222	3026

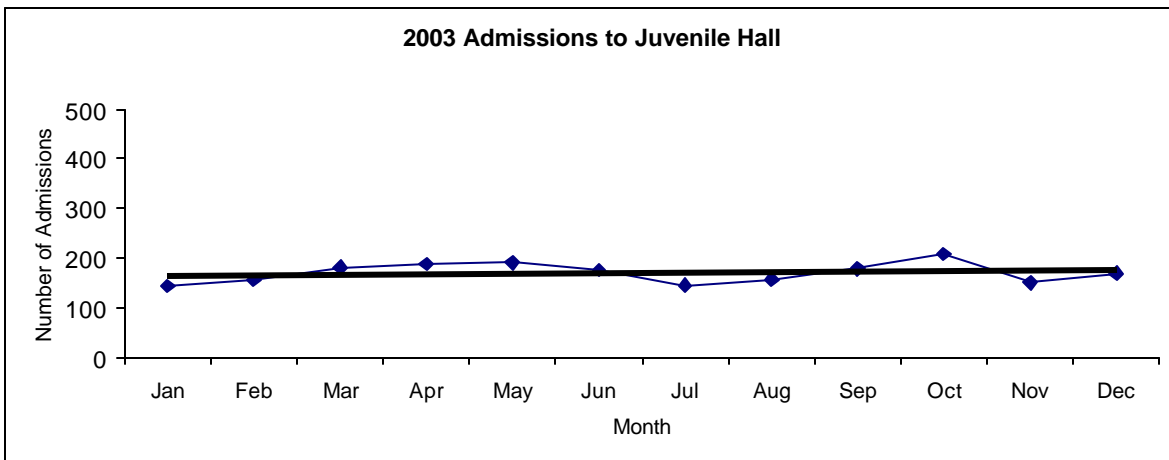


**San Francisco Juvenile Probation
Juvenile Hall Admissions By Month
(2002-2004)**

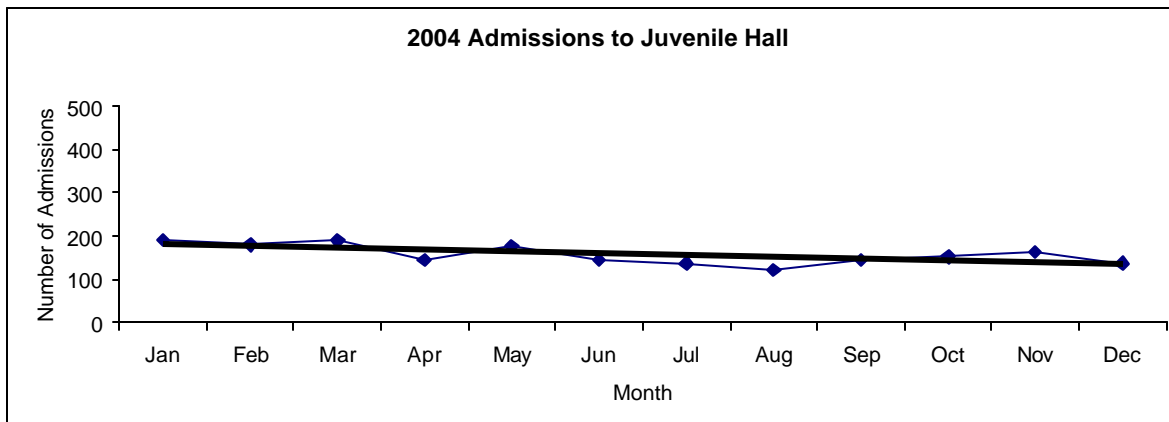
2002 Admissions	Jan	Feb	Mar	Apr	May	Jun	Jul	Aug	Sep	Oct	Nov	Dec	Total
	193	160	181	185	213	145	177	173	179	206	183	164	2159



2003 Admissions	Jan	Feb	Mar	Apr	May	Jun	Jul	Aug	Sep	Oct	Nov	Dec	Total
	144	156	181	189	191	176	145	158	179	208	151	170	2048

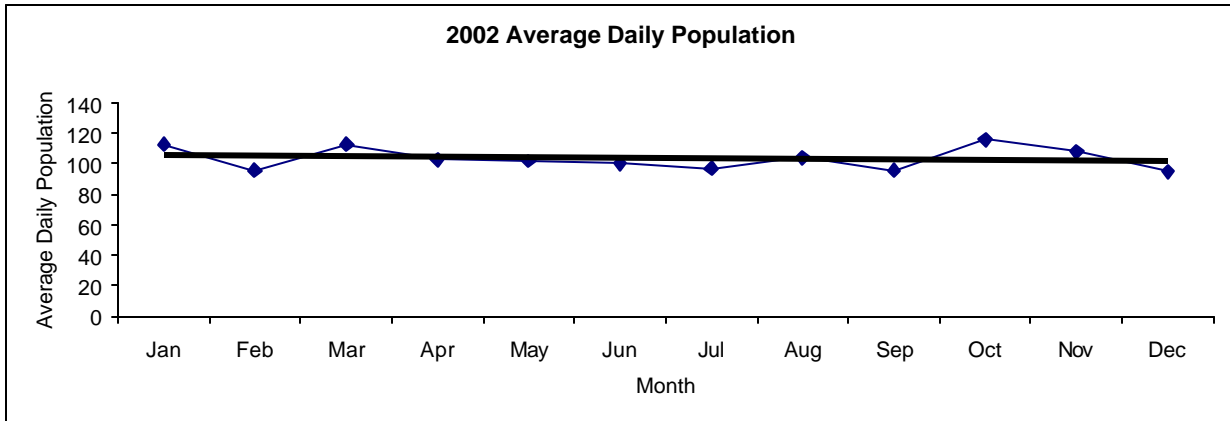


2004 Admissions	Jan	Feb	Mar	Apr	May	Jun	Jul	Aug	Sep	Oct	Nov	Dec	Total
	191	180	189	144	177	145	137	121	144	152	163	137	1880

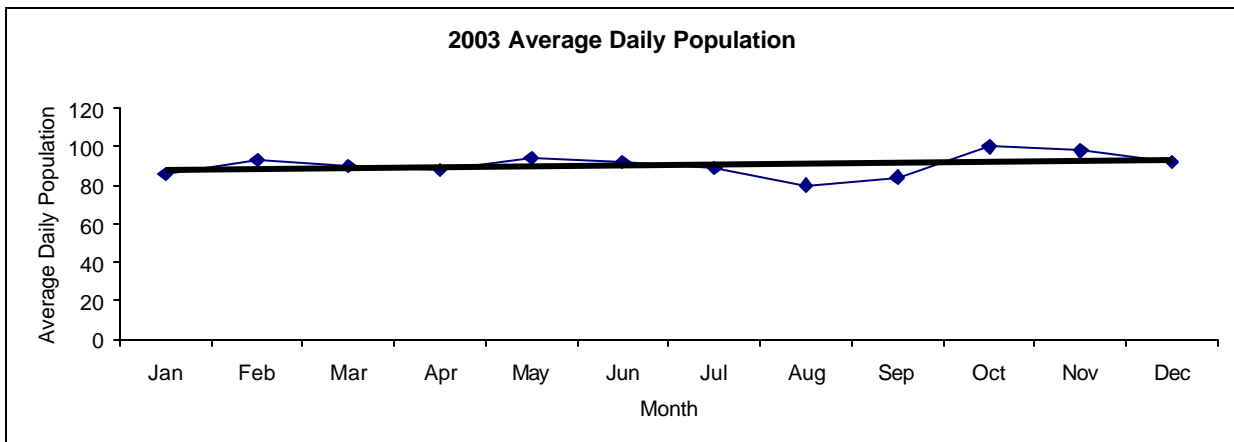


San Francisco Juvenile Probation
Juvenile Hall Average Daily Population By Month
 (Calendar Years 2002-2004)

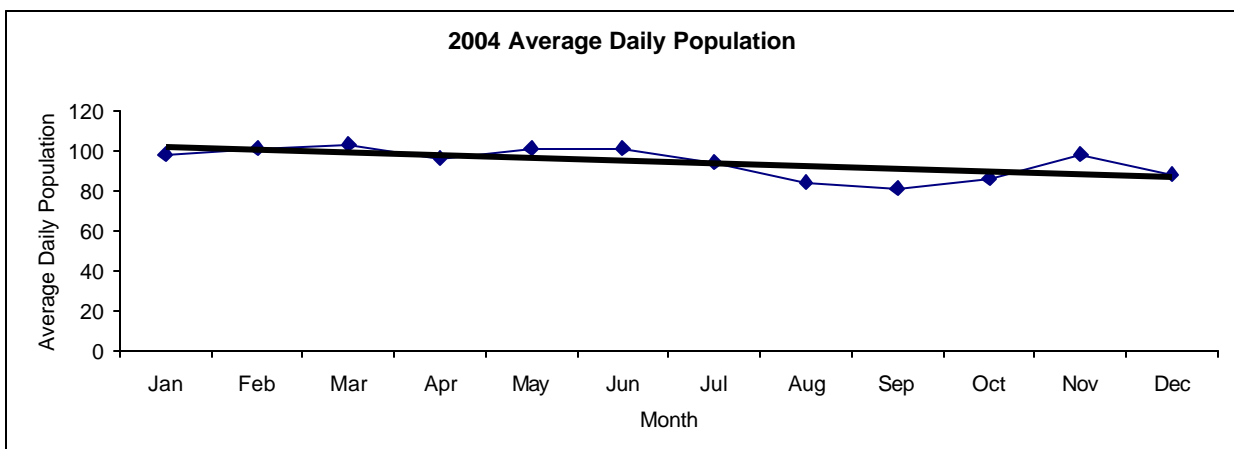
2002 Avg. Daily Pop.	Jan	Feb	Mar	Apr	May	Jun	Jul	Aug	Sep	Oct	Nov	Dec	Total
	113	96	113	103	102	100	97	104	96	116	108	95	104



2003 Avg. Daily Pop.	Jan	Feb	Mar	Apr	May	Jun	Jul	Aug	Sep	Oct	Nov	Dec	Total
	86	93	90	88	94	92	89	80	84	100	98	92	91

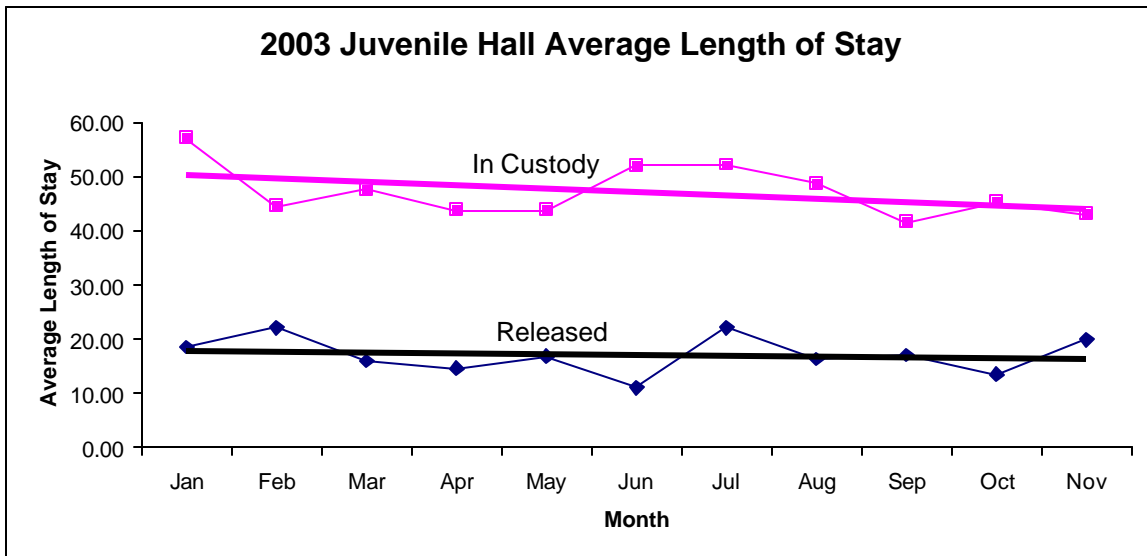


2004 Avg. Daily Pop.	Jan	Feb	Mar	Apr	May	Jun	Jul	Aug	Sep	Oct	Nov	Dec	Total
	98	101	103	96	101	101	94	84	81	86	98	88	94

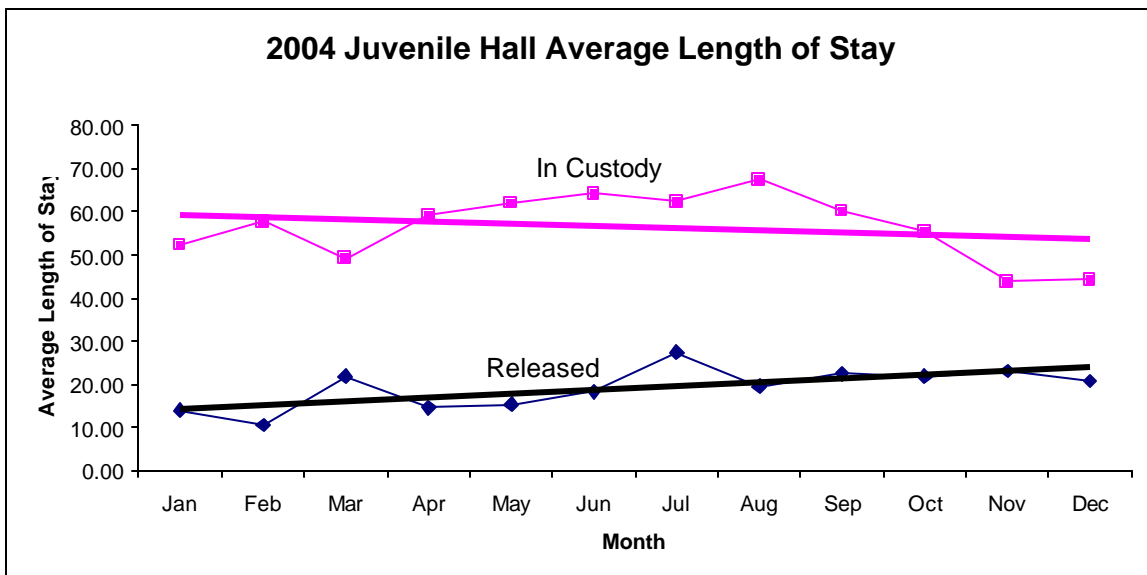


San Francisco Juvenile Probation
Juvenile Hall Average Length of Stay By Month
 (Calendar Years 2003-2004)

2003 Avg. Length of Stay	Jan	Feb	Mar	Apr	May	Jun	Jul	Aug	Sep	Oct	Nov	Dec	Total
¹ Released	18.58	22.16	15.97	14.65	16.86	11.07	22.21	16.41	17.13	13.51	19.87	17.30	17.14
² In Custody	56.97	44.53	47.63	43.78	43.80	51.98	52.13	48.67	41.61	45.30	43.04	53.96	47.78



2004 Avg. Length of Stay	Jan	Feb	Mar	Apr	May	Jun	Jul	Aug	Sep	Oct	Nov	Dec	Total
¹ Released	14.04	10.58	21.86	14.71	15.42	18.24	27.41	19.52	22.55	21.81	23.15	20.81	19.18
² In Custody	52.35	57.73	49.20	59.05	62.03	64.15	62.37	67.37	60.14	55.37	43.85	44.29	56.49



Notes: Less than one day of stay is calculated as one day.

¹ Length of stay is calculated according to release date for those who are released.

² For those still in custody, length of stay is calculated at the last day of the month.