

City and County of San Francisco



Juvenile Probation Department

---

**Monthly Report for May 2006**

Presented to the Juvenile Probation Commission

June 28<sup>th</sup>, 2006

William P. Siffermann  
Chief Probation Officer

Prepared by Jose Luis Perla  
Information Technology Director  
(415) 753-7686  
jose.perla@sfgov.org

# Table of Contents

---

## Section I Summary Reports

Juvenile Hall, Log Cabin Ranch Summary Statistics.....	1
Probation Services Summary and California Youth Authority Statistics .....	2
Active Cases by Unit and Special Services Statistics .....	3

## Section II Current Month General Detail

Probation Referrals, Juvenile Admissions And Average Daily Population .....	4
Juvenile Hall Admissions and Average Daily Population.....	5
Commitments to out-of-home placement.....	6
Commitments to California Youth Authority.....	7
Log Cabin Ranch Admissions and Average Daily Population.....	8
Probation Referrals .....	9
Juvenile Hall And Log Cabin Ranch Incident Report .....	10
Bay Area Resident Juvenile Hall Comparison .....	11
Juvenile Hall Admissions.....	12
Juvenile Hall Detainees by Detention Reason.....	13
Juvenile Hall Average Daily Population by Rated Capacity.....	14
Juvenile Hall Average Length of Stay.....	15

## Section III Demographics

Juvenile Hall Detainees by Sex and Race/Ethnic Origin.....	16
Juvenile Hall Detainees by Age .....	17
Juvenile Hall Detainees by Age and Sex.....	18
Juvenile Hall Detainees by Geographic Residence of Youth.....	19
Juvenile Hall Detainees by Race/Ethnic Origin and Sex.....	20

## **Section IV**

### **Historical Information**

2003-2005 Probation Referrals .....	21
2003-2005 Juvenile Hall Admissions .....	22
2003-2005 Juvenile Hall Average Daily Population.....	23
2004-2005 Juvenile Hall Average Length of Stay by Month.....	24



# **Section I**

# **Summary Reports**

## Summary Report for the Month of May 2006

<b>Juvenile Hall</b>	<i>April 2005</i>	<i>April 2006</i>	<i>May 2005</i>	<i>May 2006</i>	<i>YTD 2005</i>	<i>YTD 2006</i>
Admissions	170	156	167	189	817	844
Average Daily Population	101	99	103	111	105	96
Average Length of Stay (Releases)	62.12	18.77	20.51	17.71	27.81	16.61
Average Length of Stay (In Custody)	97.58	34.86	44.73	32.73	54.47	33.80
Releases	166	162	171	168	797	799
<b>Log Cabin Ranch</b>						
Admissions:						
First Time Commitments	1	1	3	3	16	13
Recommitments	0	0	0	0	0	0
<i>Total</i>	<b>1</b>	<b>1</b>	<b>3</b>	<b>3</b>	<b>16</b>	<b>13</b>
Releases:						
Graduated	2	2	1	2	8	8
Escape	0	0	0	0	0	2
Other releases	1	0	4	3	5	3
<i>Total</i>	<b>3</b>	<b>2</b>	<b>5</b>	<b>5</b>	<b>13</b>	<b>13</b>
Average Daily Population	17	27	16	27	14	26
<b>Incident Reports</b>						
Juvenile Hall	7	8	16	9	63	48
Log Cabin Ranch	0	0	0	5	0	11
<i>Total</i>	<b>7</b>	<b>8</b>	<b>16</b>	<b>14</b>	<b>63</b>	<b>59</b>

## Summary Report for the Month of May 2006

<b>Probation Services</b>	<i>April 2006</i>	<i>May 2006</i>	<i>Year To Date 2006</i>
Probation Referrals	242	266	1293
Petitions	119	149	654
Selected Court Dispositions:			
California Youth Authority	0	0	0
Log Cabin Ranch	3	4	17
Out of Home Placement	11	13	62
Ward Probation	32	40	160
Violation of Probation Petitions Filed	23	23	105
<b>California Youth Authority Monthly Count San Francisco County Juvenile Court Cases May 31<sup>st</sup>, 2006</b>			
Category	Institutions	Parole	
<b>Males</b>			
White	2	2	
Hispanic	2	11	
African American	18	10	
Asian	0	2	
Native American	0	0	
Filipino	0	0	
Pacific Islander	0	2	
Other	0	0	
<b>Total</b>	<b>22</b>	<b>27</b>	
<b>Females</b>			
White	0	0	
Hispanic	1	2	
African American	0	2	
Asian	0	0	
Native American	0	0	
Filipino	0	0	
Pacific Islander	0	0	
Other	1	1	
<b>Total</b>	<b>2</b>	<b>5</b>	
<b>Grand Total</b>	<b>24</b>	<b>32</b>	

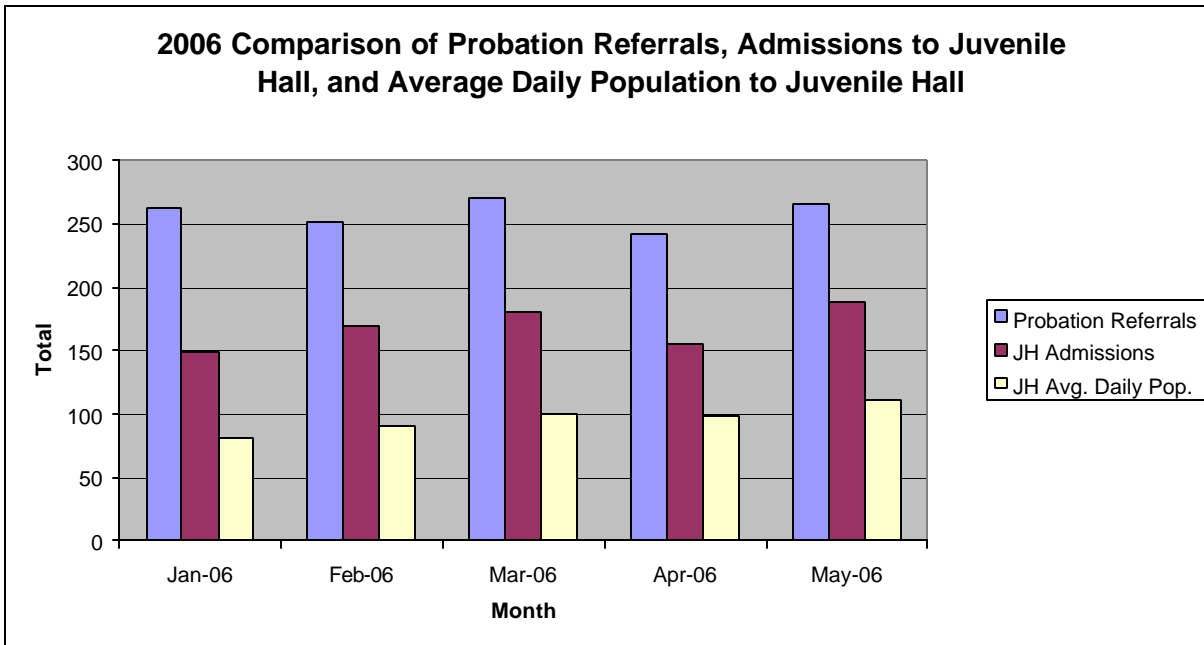
## Summary Report for the Month of May 2006

<b>Probation Services</b>			
<b>Active Cases by Units</b>	April 2006	May 2006	May Average # Youth by PO
CARC	60	71	71
Intake Green (Custody Screening Investigation)	158	175	25
Intake Gold (Probation Services 1)	381	178	16
Probation Services 2	220	211	21
Probation Services 3	181	380	63
Probation Services 4	239	231	25
YTEC	26	23	23
Special Services	114	109	27
<i>Total</i>	<b>1379</b>	<b>1378</b>	<b>34</b>
<b>Special Services Unit</b>	New	Closed	Active at end of Month
Record Sealings	10	2	180
Stepparent Adoptions	2	0	60
Terminations	0	0	14
Marriage Consents	0	0	1
Custody Evaluations	0	0	0
	Entered	Completed	Active at end of Month
Community Service	13	4	1347
		Referred	Completed at end of Month
Street Law		10	7
Theft Awareness		24	14
Anger Management for boys		17	15
Anger Management for girls		8	4
Life Management Skills		2	2
Kids Turn Non-Violent Family Skills (looking for a replacement teacher)		0	0
Information, Record Checks, Research & Photo Copying Juvenile Records For:	April 2006	May 2006	Year to Date 2006
Job Corps, Probation Departments,			
Military, Law Enforcement,			
Misc., (letters, Memos, Forms, etc.)	159	151	801

**Section II**  
**Current Month**  
**General Detail**

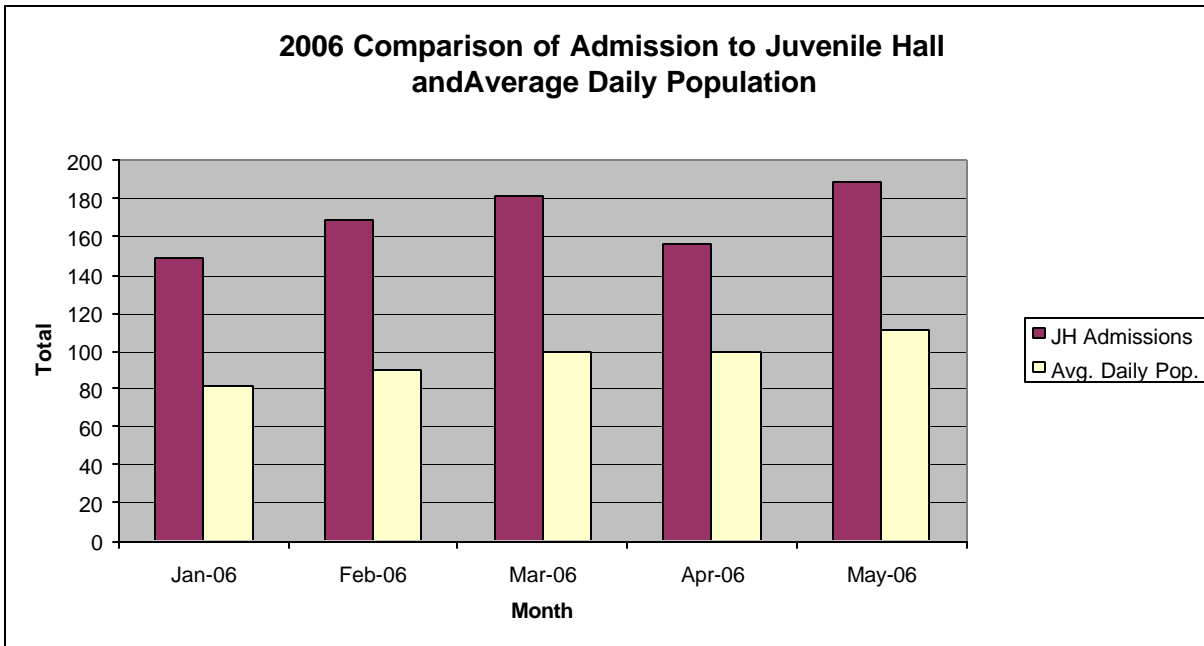
## San Francisco Juvenile Probation Department

	Jan-06	Feb-06	Mar-06	Apr-06	May-06	Jun-06	Jul-06	Aug-06	Sep-06	Oct-06	Nov-06	Dec-06
Probation Referrals	263	251	271	242	266							
JH Admissions	149	169	181	156	189							
JH Avg. Daily Pop.	81	90	100	99	111							



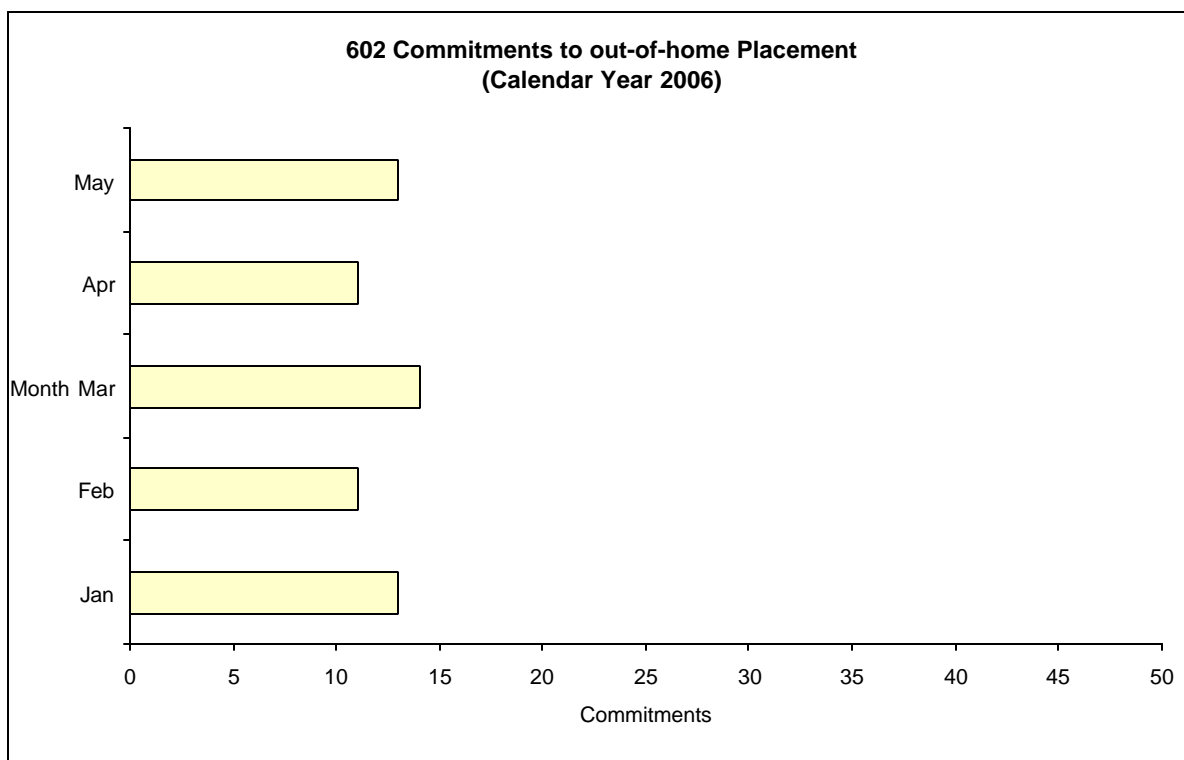
## San Francisco Juvenile Probation Department

	Jan-06	Feb-06	Mar-06	Apr-06	May-06	Jun-06	Jul-06	Aug-06	Sep-06	Oct-06	Nov-06	Dec-06
JH Admissions	149	169	181	156	189							
Avg. Daily Pop.	81	90	100	99	111							



## Calendar Year 2006

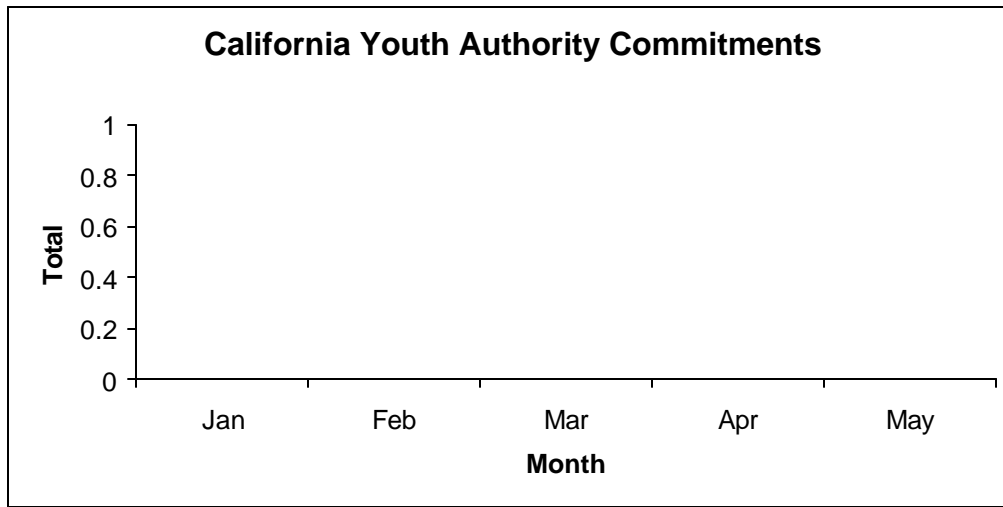
Commitments	Jan	Feb	Mar	Apr	May	Jun	Jul	Aug	Sep	Oct	Nov	Dec	Total
2006	13	11	14	11	13								62



<sup>1</sup> This report is based on 602 Commitments to out-of-home placements. If there is a 601 commitment, it will show as a footnote here. Figures are regularly updated to include reports from previous reporting periods.

California Youth Authority  
 Commitments  
 (Calendar Year 2006)

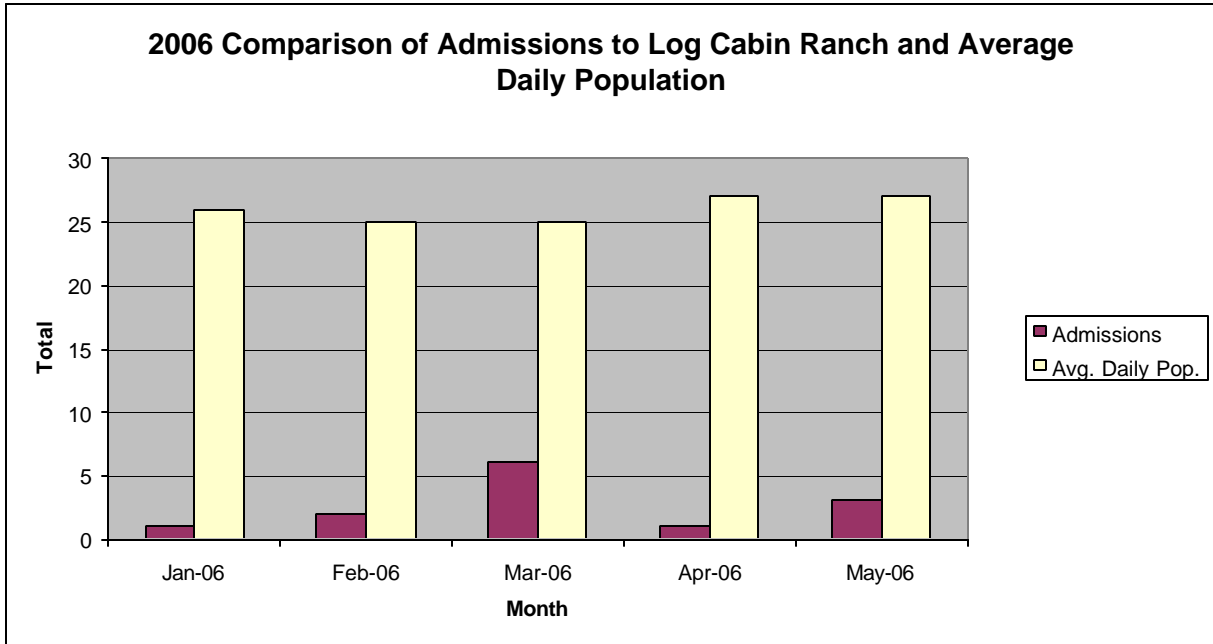
<b>Commitments</b>	Jan	Feb	Mar	Apr	May	Jun	Jul	Aug	Sep	Oct	Nov	Dec	<b>Total</b>
2006	0	0	0	0	0								<b>0</b>



*There was a CYA Evaluation for 90 days Court Disposition on April 19, 2006*

## San Francisco Juvenile Probation Department

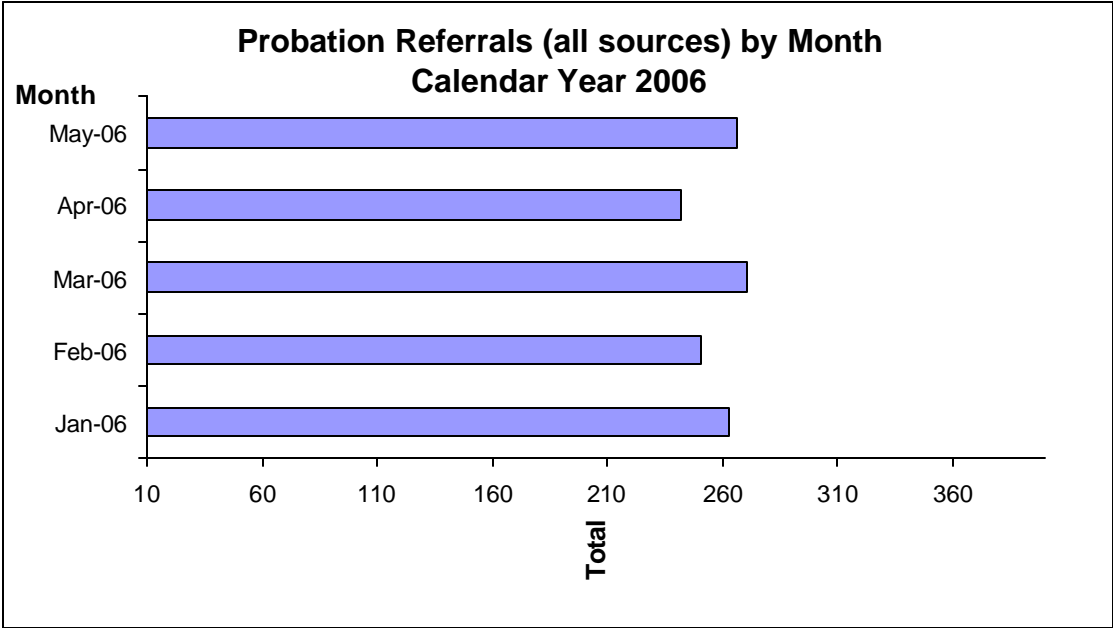
	Jan-06	Feb-06	Mar-06	Apr-06	May-06	Jun-06	Jul-06	Aug-06	Sep-06	Oct-06	Nov-06	Dec-06
Admissions	1	2	6	1	3							
Avg. Daily Pop.	26	25	25	27	27							



# Probation Referrals by Month Calendar Year 2006

## Probation Referrals (all sources) by Month (602 W&I)

Jan-06	263
Feb-06	251
Mar-06	271
Apr-06	242
May-06	266
Jun-06	
Jul-06	
Aug-06	
Sep-06	
Oct-06	
Nov-06	
Dec-06	

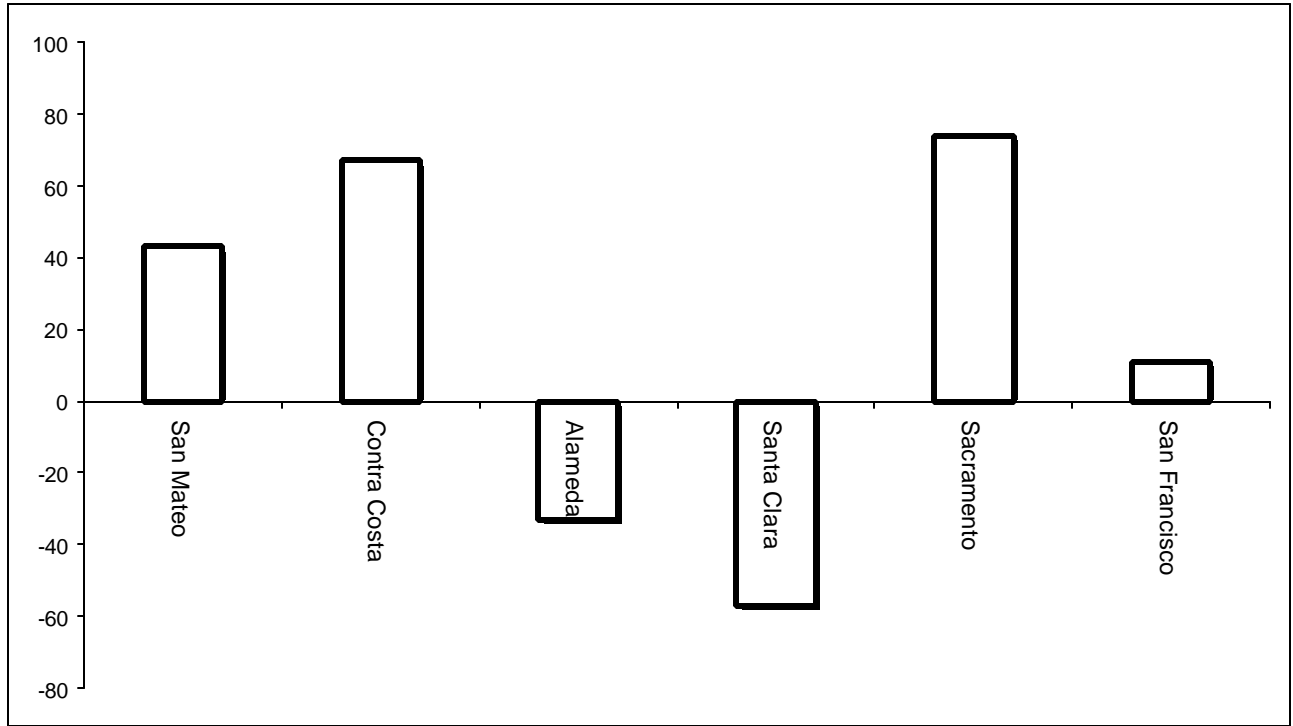


SAN FRANCISCO JUVENILE PROBATION DEPARTMENT  
 MONTHLY INCIDENT REPORT FORM  
 MONTH/YEAR: MAY 2006

<b>Log Cabin Ranch</b>	Battery on Staff	Injury to Staff due to Restraint of Minor	Fight	Battery Youth on Youth	Attempted Escape	AWOL	Attempted Suicide	Serious Contraband (Weapon Illegal Drug)
	<b>0</b>	<b>0</b>	<b>1</b>	<b>0</b>	<b>0</b>	<b>3</b>	<b>0</b>	<b>0</b>
	Battery on Staff with Injury	Fire	Fight with Injury	Battery Youth on Youth with Injury	Escape	Death	Suicide	Major Property Destruction
	<b>0</b>	<b>0</b>	<b>0</b>	<b>0</b>	<b>0</b>	<b>0</b>	<b>0</b>	<b>1</b>
<b>Juvenile Hall</b>	Battery on Staff	Injury to Staff due to Restraint of Minor	Fight	Battery Youth on Youth	Attempted Escape	AWOL	Attempted Suicide	Serious Contraband (Weapon Illegal Drug)
	<b>0</b>	<b>0</b>	<b>4</b>	<b>2</b>	<b>0</b>	<b>0</b>	<b>1</b>	<b>0</b>
	Battery on Staff with Injury	Fire	Fight with Injury	Battery Youth on Youth with Injury	Escape	Death	Suicide	Major Property Destruction
	<b>0</b>	<b>0</b>	<b>2</b>	<b>0</b>	<b>0</b>	<b>0</b>	<b>0</b>	<b>0</b>

## Bay Area Resident Juvenile Hall Comparison Over/Under Capacity

on June 1<sup>st</sup>, 2006

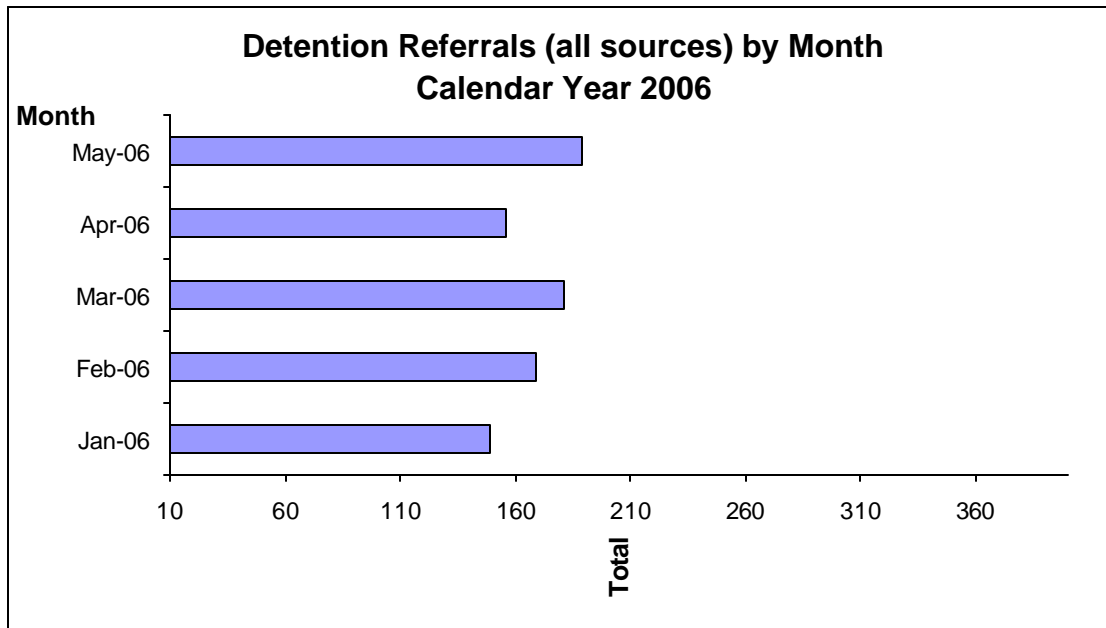


	<b>Rated Capacity</b>	<b>Actual</b>	<b>Over/Under Capacity</b>
San Mateo	130	173	43
Contra Costa	160	227	67
Alameda	288	255	-33
Santa Clara	329	272	-57
Sacramento	256	330	74
San Francisco	104	115	11

## Probation Referrals by Month Calendar Year 2006

### Detention Referrals (all sources) by Month (602 W&I)

Jan-06	149
Feb-06	169
Mar-06	181
Apr-06	156
May-06	189
Jun-06	
Jul-06	
Aug-06	
Sep-06	
Oct-06	
Nov-06	
Dec-06	

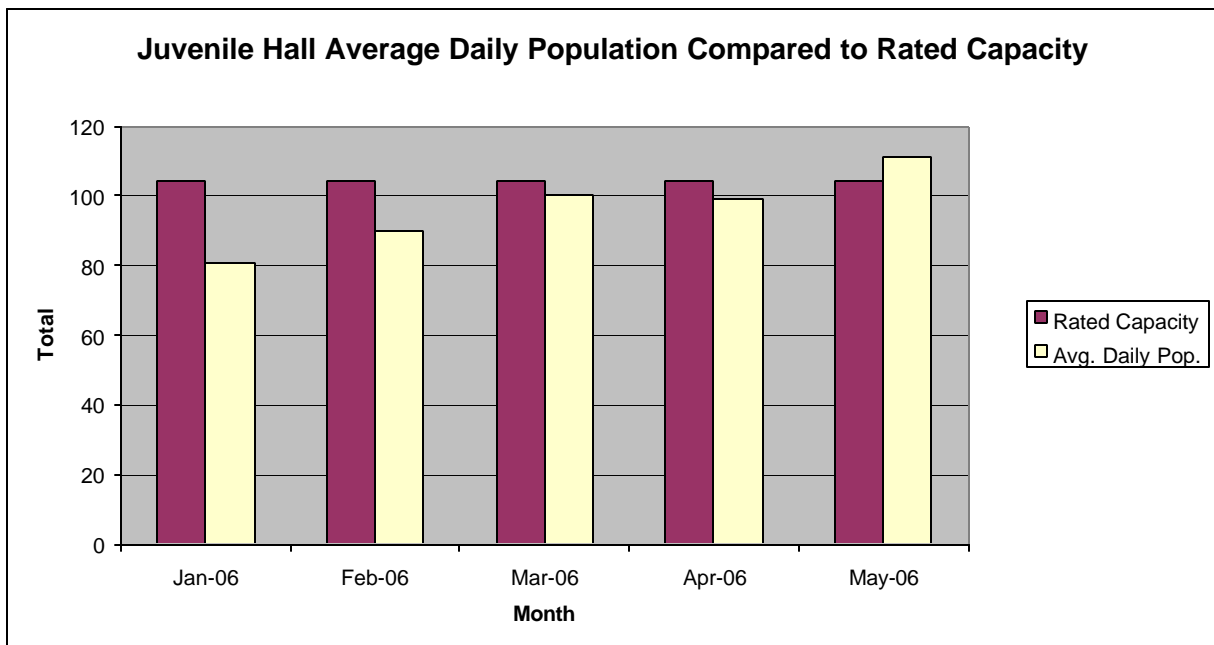


**Characteristics of Juvenile Hall Detainees on May 31<sup>st</sup>, 2006  
Using CJIS Code From the Department of Justice**

Detention Reason	Offense Code	MFI	Count	%
ATTEMPTED MURDER:SECOND DEGREE ON PEACE OFFICER	664 /187 (A) PC	F	1	0.87%
TORTURE	206 PC	F	5	4.35%
KIDNAP TO COMMIT ROBBERY/RAPE/289 PC/ETC	209 (B)(1) PC	F	1	0.87%
KIDNAPPING	207 (A) PC	F	5	4.35%
SHOOT AT INHABITED DWELLING/VEHICLE/ETC	246 PC	F	1	0.87%
ROBBERY	212.5 PC	F	2	1.74%
ROBBERY:FIRST DEGREE:CAB/ETC/INHABITED DWELLING	212.5(A) PC	F	2	1.74%
ASSAULT W/DEADLY WEAPON ON TRANSPORTATION PERSONNEL/ETC	245.2 PC	F	1	0.87%
ADW/ETC ON SCHOOL EMPLOYEE	245.5 PC	F	1	0.87%
TRANSPORT/SELL NARCOTIC/CONTROLLED SUBSTANCE	11352 (A) HS	F	5	4.35%
POSSESS/PURCHASE COCAINE BASE FOR SALE	11351.5 HS	F	1	0.87%
BURGLARY	459 PC	F	5	4.35%
ROBBERY:SECOND DEGREE	212.5(C) PC	F	20	17.39%
FORCE OR ADW NOT FIREARM:GBI LIKELY	245 (A)(1) PC	F	8	6.96%
POSSESS NARCOTIC CONTROLLED SUBSTANCE	11350 (A) HS	F	1	0.87%
POSSESS MARIJUANA FOR SALE	11359 HS	F	1	0.87%
BURGLARY:SECOND DEGREE	459 PC	F	1	0.87%
GRAND THEFT:MONEY/LABOR/PROPERTY OVER \$400	487 (A) PC	F	1	0.87%
TAKE VEHICLE W/O OWNER'S CONSENT/VEHICLE THEFT	10851 (A) VC	F	1	0.87%
ATTEMPT TO COMMIT 496 PC:STOLEN PROPERTY	496 (D) PC	F	1	0.87%
RECEIVE/ETC KNOWN STOLEN PROPERTY	496 (A) PC	F	2	1.74%
POSSESS WEAPON/ETC AT SCHOOL	626.10(A) PC	F	2	1.74%
CARRY LOADED FIREARM IN PUBLIC UNDER SPECIFIC CIRCUMSTANCES	12031 (A)(1) PC	F	1	0.87%
ACCESSORY	32 PC	F	1	0.87%
OBSTRUCT/RESIST/ETC PUBLIC/PEACE OFFICER/EMERGENCY MED TECH	148 (A)(1) PC	M	1	0.87%
TAMPER/ETC WITH FIRE ALARM/ETC	148.4(A)(1) PC	M	1	0.87%
MINOR ATTEMPT ESCAPE/ESCAPE COUNTY FACILITY	871 (A) WI	M	1	0.87%
DISORDERLY CONDUCT:PROSTITUTION	647 (B) PC	M	1	0.87%
LOITER:INTENT:PROSTITUTION	653.22(A) PC	M	3	2.61%
FIGHT/CHALLENGE FIGHT PUBLIC PLACE	415 (1) PC	M	1	0.87%
FAIL TO OBEY ORDER OF JUVENILE COURT 602 WI	777 (A)(2) WI	M	6	5.22%
CHANGE OF PLACEMENT/PLACEMENT FAILURE	737 WI	M	5	4.35%
VIOLATION(S) OF HOME SUPERVISION CONDITION	628.1 WI	M	7	6.09%
BENCH WARRANT	BENCH WARRANT		5	4.35%
WARRANT	WRNT602		7	6.09%
WARRANT FROM ANOTHER COUNTY	WRNTOC		2	1.74%
COURT ORDER	CTORD 602		5	4.35%
		<b>Total</b>	<b>115</b>	<b>100.00%</b>

## San Francisco Juvenile Probation Department

	Jan-06	Feb-06	Mar-06	Apr-06	May-06	Jun-06	Jul-06	Aug-06	Sep-06	Oct-06	Nov-06	Dec-06
Rated Capacity	104	104	104	104	104							
Avg. Daily Pop.	81	90	100	99	111							



## Juvenile Hall Average Length of Stay

For the Month of May 2006

### <sup>1</sup>Released

<b>Range of Days</b>	<i>1-10 days</i>	<i>11-20 days</i>	<i>21-30 days</i>	<i>30 or more days</i>	<b>Total</b>
# of Youth Released	109	19	12	28	168
% of Population	64.88%	11.31%	7.14%	16.67%	100%
# of Days	455	278	295	1947	2975
% of Total Days	15.29%	9.34%	9.92%	65.45%	100%
Average Length of Stay	4.17	14.63	24.58	69.54	17.71

### <sup>2</sup>In Custody

<b>Range of Days</b>	<i>1-10 days</i>	<i>11-20 days</i>	<i>21-30 days</i>	<i>30 or more days</i>	<b>Total</b>
# of Youth Detained	36	14	23	42	115
% of Population	31.30%	12.17%	20.00%	36.52%	100%
# of Days	202	219	576	2767	3764
% of Total Days	5.37%	5.82%	15.30%	73.51%	100%
Average Length of Stay	5.61	15.64	25.04	65.88	32.73

Notes: Less than one day of stay is calculated as one day.

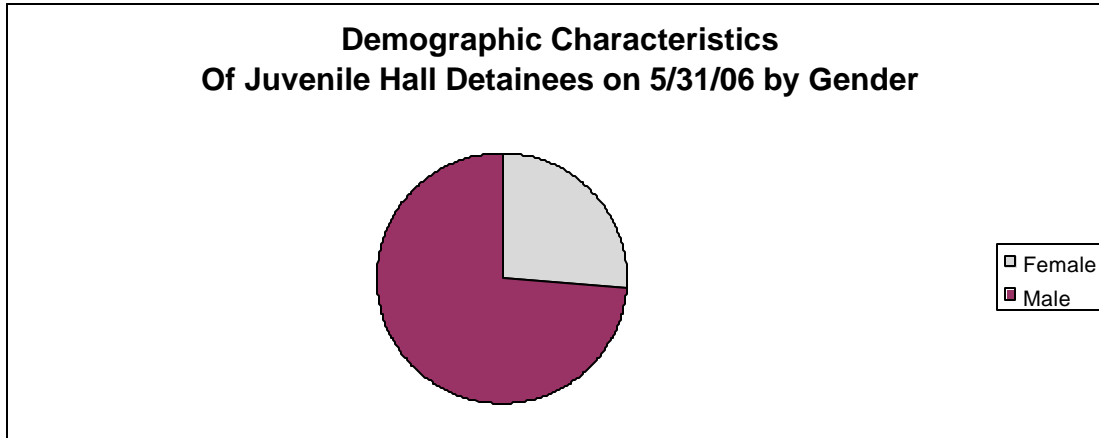
<sup>1</sup>Length of stay is calculated according to release date for those who are released.

<sup>2</sup>For those still in custody, length of stay is calculated at the last day of the month.

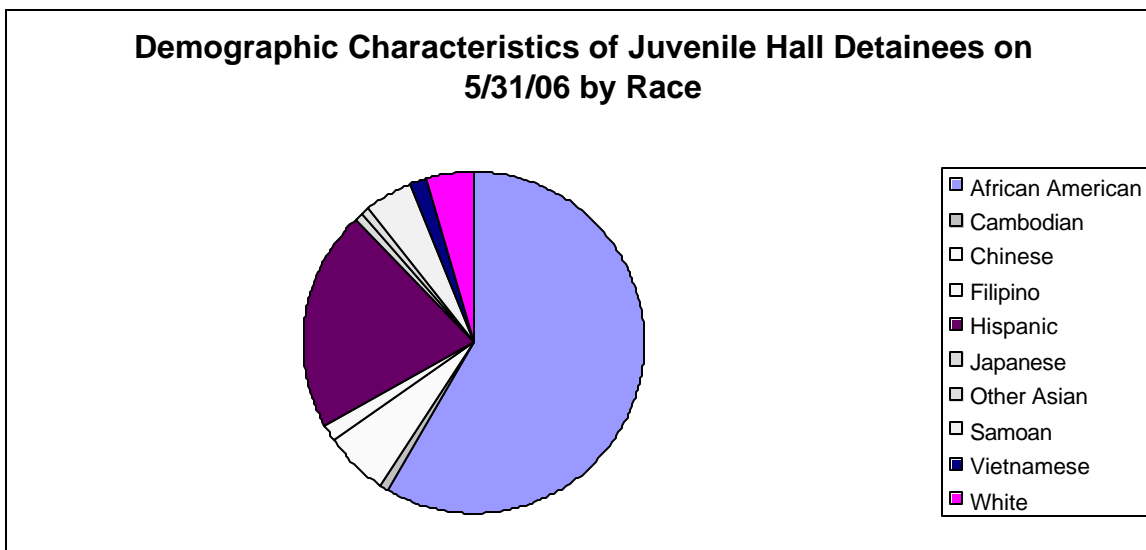
# **Section III**

## **Demographics**

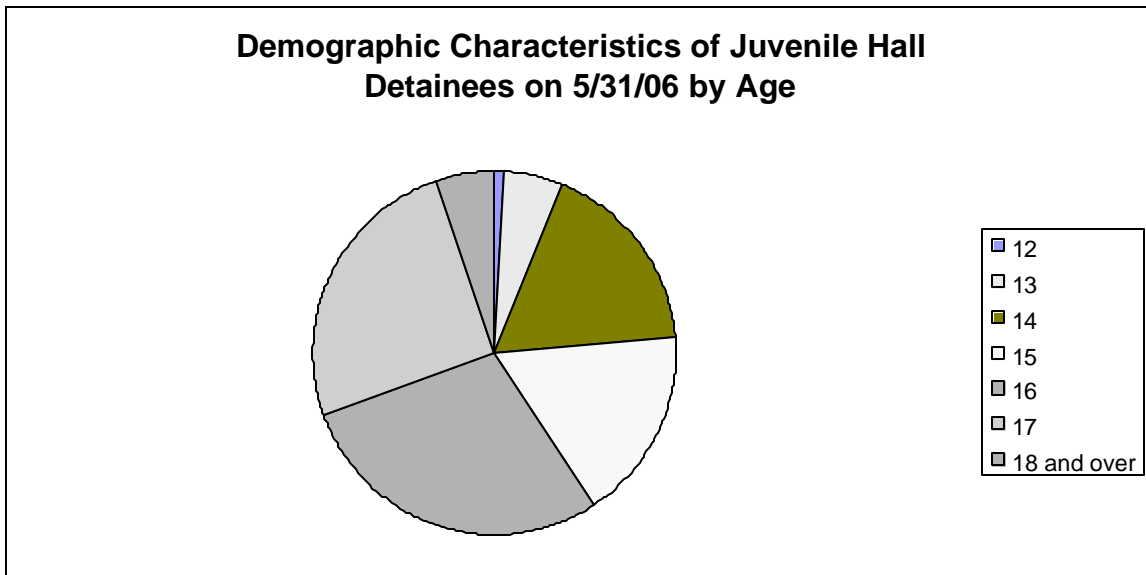
Gender	Frequency	Percent
Female	30	26.09%
Male	85	73.91%
<b>Total</b>	<b>115</b>	<b>100.00%</b>



Race/Ethnic Origin	Frequency	Percent
African American	67	58.26%
Cambodian	1	0.87%
Chinese	7	6.09%
Filipino	2	1.74%
Hispanic	24	20.87%
Japanese	1	0.87%
Other Asian	1	0.87%
Samoan	5	4.35%
Vietnamese	2	1.74%
White	5	4.35%
<b>Total</b>	<b>115</b>	<b>100.00%</b>

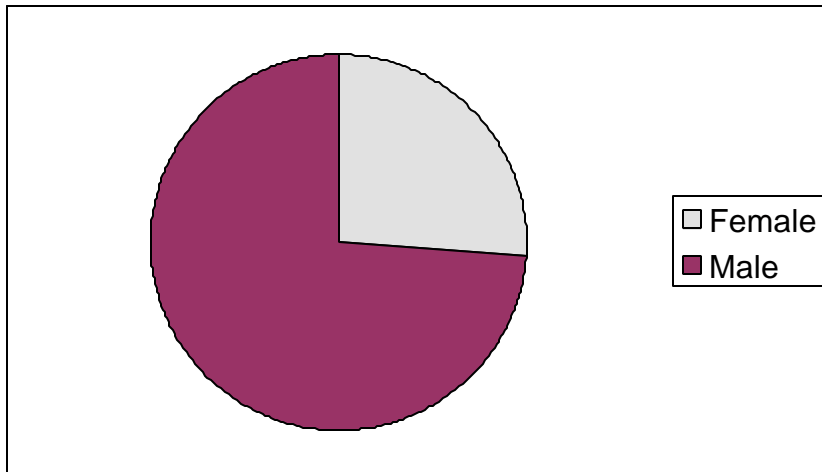


Age	Frequency	Percent
11	0	0.00%
12	1	0.87%
13	6	5.22%
14	20	17.39%
15	20	17.39%
16	33	28.70%
17	29	25.22%
18 and over	6	5.22%
<b>Total</b>	<b>115</b>	<b>100.00%</b>



Demographic Characteristics of Juvenile Hall Detainees  
on 5/31/2006  
Age by Gender

Age	Female	Male	Total	
11	0	0	0	0.00%
12	0	1	1	0.87%
13	2	4	6	5.22%
14	6	14	20	17.39%
15	7	13	20	17.39%
16	10	23	33	28.70%
17	5	24	29	25.22%
18 and over	0	6	6	5.22%
<b>Total</b>	<b>30</b>	<b>85</b>	<b>115</b>	<b>100.00%</b>
	<b>26.09%</b>	<b>73.91%</b>	<b>100.00%</b>	



Demographic Characteristics  
Of Juvenile Hall Detainees on May 31<sup>st</sup>, 2006

---

<b>Geographic Residence of Youth</b>	Frequency	Percent
Richmond	4	3.5
North of Market/Downtown	5	4.3
Treasure Island/Yerba Buena	1	.9
Western Addition	14	12.2
South of Market/Tenderloin	3	2.6
Sunset	3	2.6
Inner Mission	7	6.1
Potrero	2	1.7
Parkside	4	3.5
Ingleside (West of Twin Peaks)	6	5.2
Outer Mission	19	16.5
Bayview	25	21.7
Non-San Francisco and Unavailable*	22	19.1
	-----	-----
Total	115	100.0

<b>*Non-San Francisco and Unavailable</b>	Frequency	Percent
BAKERSFIELD	1	4.5
BAY POINT	1	4.5
BOONVILLE	1	4.5
DALY CITY	2	9.1
EL SOBRANTE	2	9.1
HAYWARD	2	9.1
HONDURAS	1	4.5
LIVERMORE	1	4.5
MODESTO	1	4.5
OAKLAND	6	27.3
ROHNERT PARK	1	4.5
SAUSALITO	1	4.5
UNAVAILABLE	2	9.1
	-----	-----
Total	22	100.0

Demographic Characteristics  
Of Juvenile Hall Detainees on May 31<sup>st</sup>, 2006

---

**Race/Ethnic Origin by Gender**

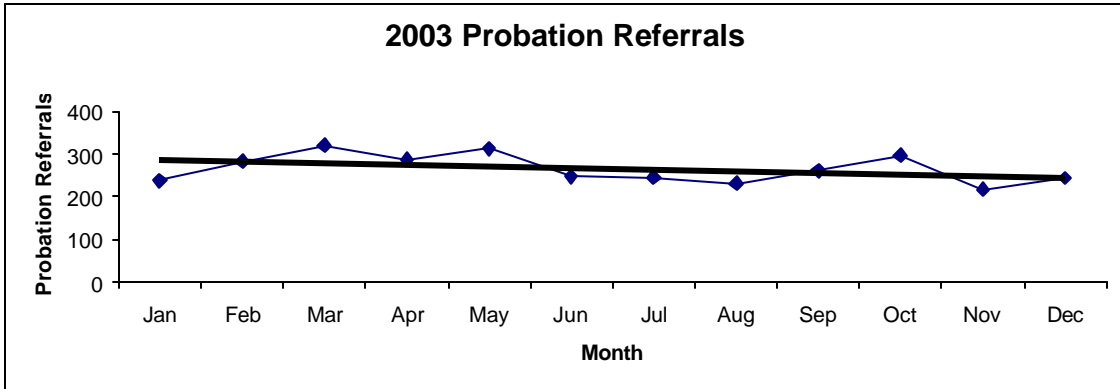
Count	GENDER		Row Total
	Female F	Male M	
<b>RACE</b>			
OTHER ASIAN		1	1 .9
AFRICAN AMERICAN	16	51	67 58.3
CHINESE	2	5	7 6.1
CAMBODIAN	1		1 .9
FILIPINO	2		2 1.7
HISPANIC	3	21	24 20.9
JAPANESE	1		1 .9
SAMOAN	1	4	5 4.3
VIETNAMESE	2		2 1.7
WHITE	2	3	5 4.3
Column Total	30 26.1	85 73.9	115 100.0

# **Section IV**

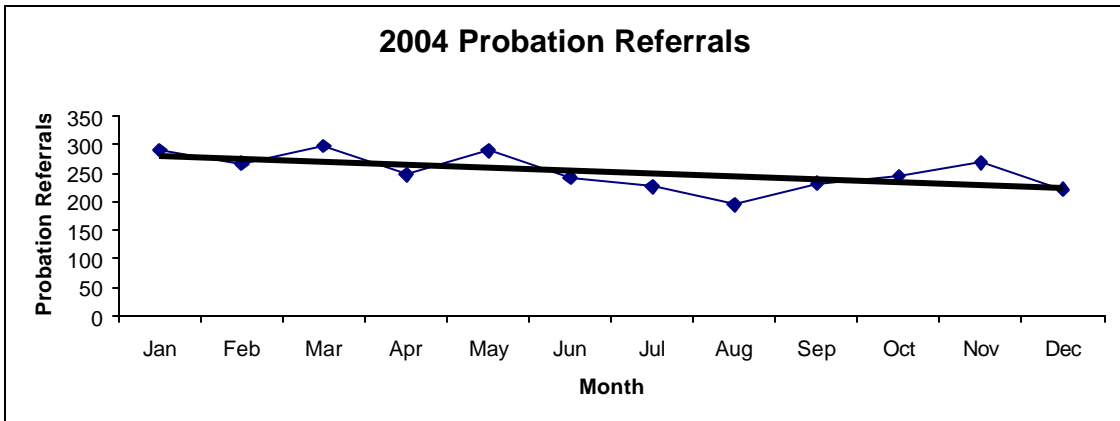
## **Historical Information**

**San Francisco Juvenile Probation Department**  
**Probation Referrals (all sources) By Month**  
(2003-2005)

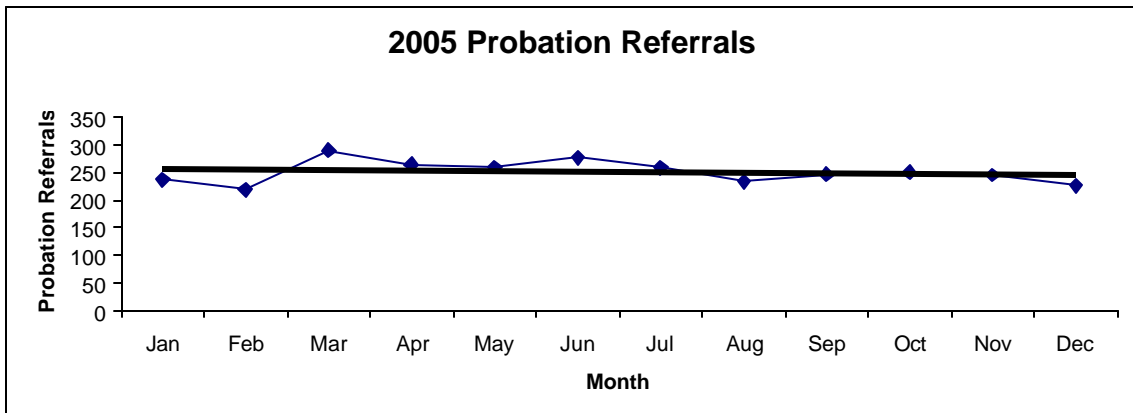
2003 Probation Referrals	Jan	Feb	Mar	Apr	May	Jun	Jul	Aug	Sep	Oct	Nov	Dec	Total
	238	283	320	288	313	248	245	231	261	297	218	243	<b>3185</b>



2004 Probation Referrals	Jan	Feb	Mar	Apr	May	Jun	Jul	Aug	Sep	Oct	Nov	Dec	Total
	291	268	298	247	289	243	227	195	232	245	269	222	<b>3026</b>

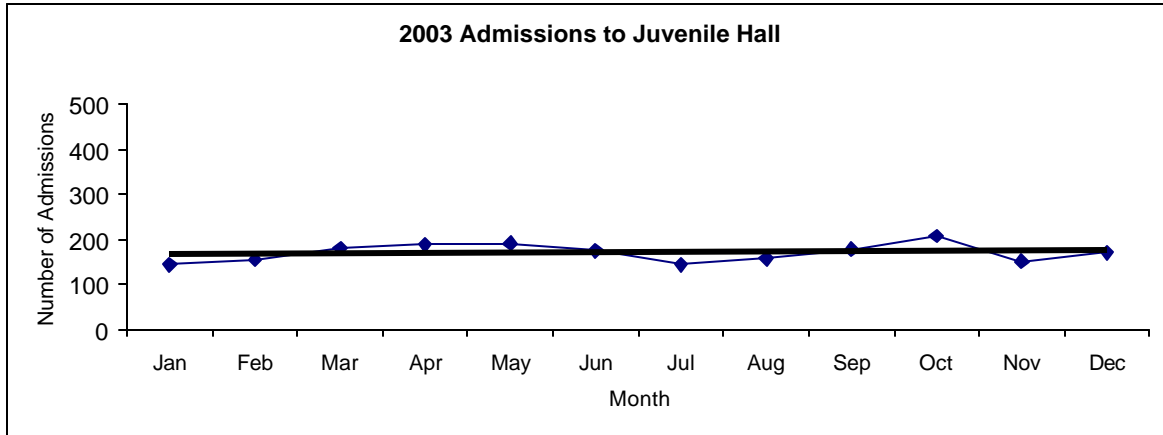


2005 Probation Referrals	Jan	Feb	Mar	Apr	May	Jun	Jul	Aug	Sep	Oct	Nov	Dec	Total
	238	219	290	265	260	277	259	234	247	251	246	227	<b>3013</b>

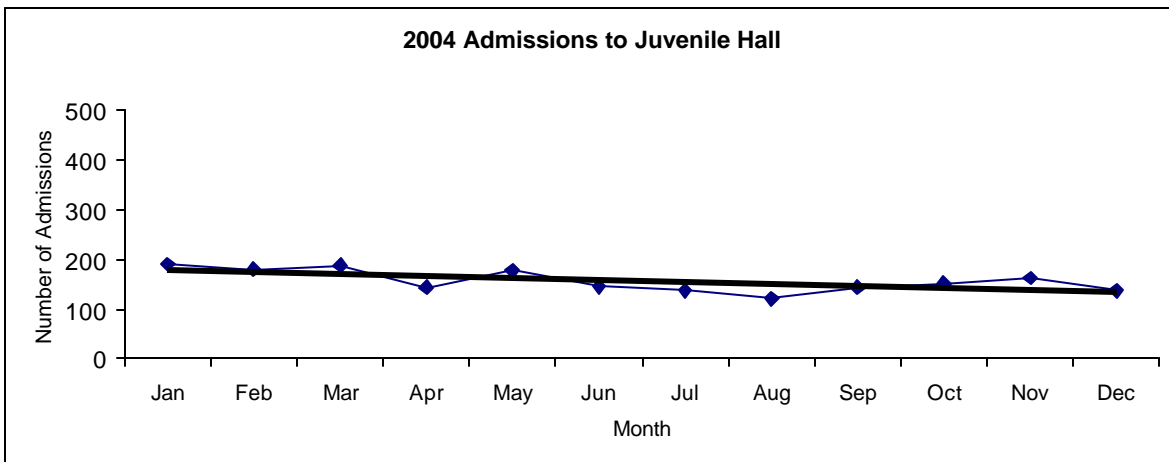


**San Francisco Juvenile Probation  
Juvenile Hall Admissions By Month  
(2003-2005)**

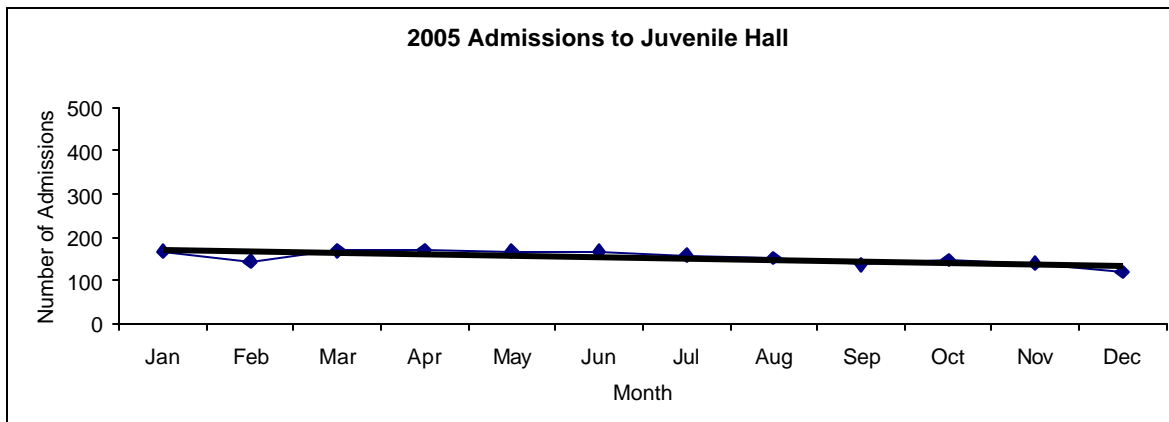
2003 Admissions	Jan	Feb	Mar	Apr	May	Jun	Jul	Aug	Sep	Oct	Nov	Dec	Total
	144	156	181	189	191	176	145	158	179	208	151	170	<b>2048</b>



2004 Admissions	Jan	Feb	Mar	Apr	May	Jun	Jul	Aug	Sep	Oct	Nov	Dec	Total
	191	180	189	144	177	145	137	121	144	152	163	137	<b>1880</b>

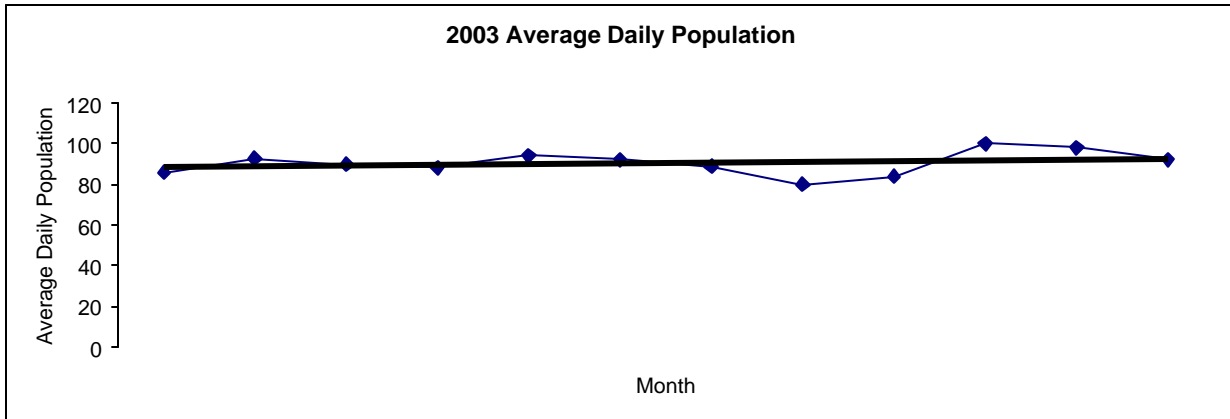


2005 Admissions	Jan	Feb	Mar	Apr	May	Jun	Jul	Aug	Sep	Oct	Nov	Dec	Total
	167	144	169	170	167	168	158	152	136	148	139	120	<b>1838</b>

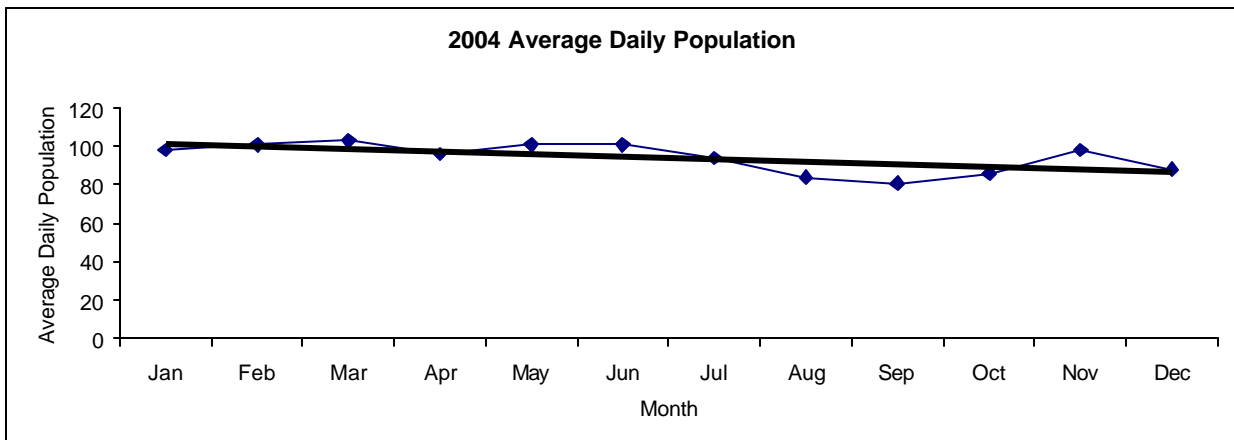


San Francisco Juvenile Probation  
**Juvenile Hall Average Daily Population By Month**  
 (Calendar Years 2003-2005)

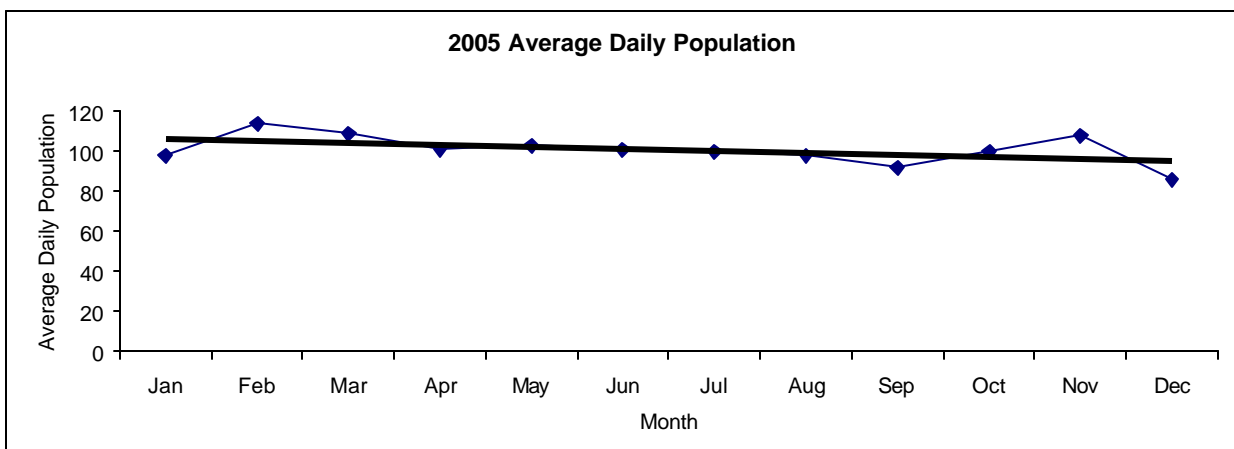
2003 Avg. Daily Pop.	Jan	Feb	Mar	Apr	May	Jun	Jul	Aug	Sep	Oct	Nov	Dec	Total
	86	93	90	88	94	92	89	80	84	100	98	92	<b>91</b>



2004 Avg. Daily Pop.	Jan	Feb	Mar	Apr	May	Jun	Jul	Aug	Sep	Oct	Nov	Dec	Total
	98	101	103	96	101	101	94	84	81	86	98	88	<b>94</b>

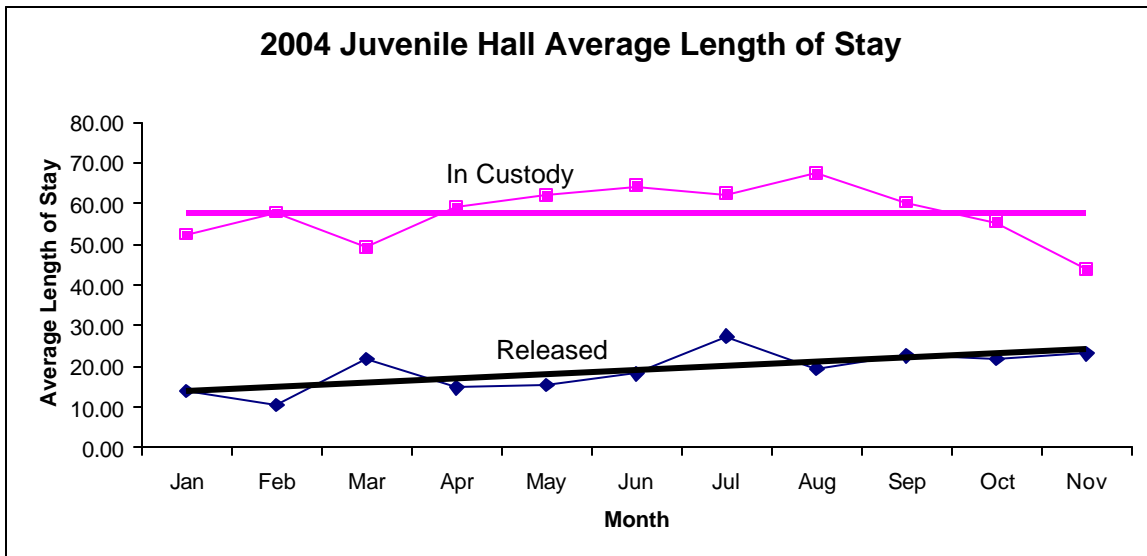


2005 Avg. Daily Pop.	Jan	Feb	Mar	Apr	May	Jun	Jul	Aug	Sep	Oct	Nov	Dec	Total
	98	114	109	101	103	101	100	98	92	100	108	86	<b>100</b>

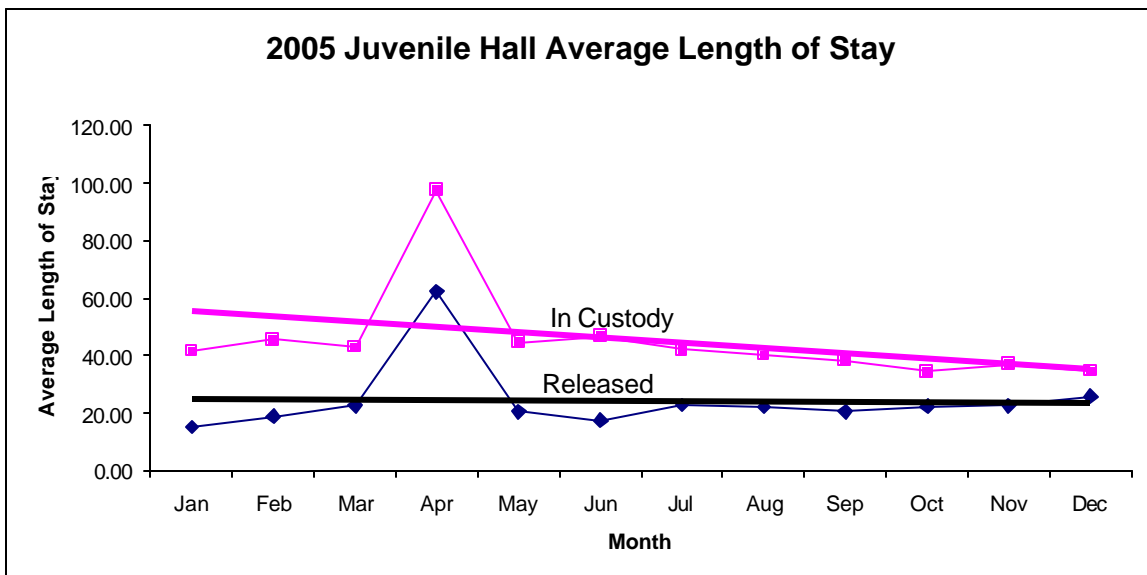


**San Francisco Juvenile Probation**  
**Juvenile Hall Average Length of Stay By Month**  
 (Calendar Years 2004-2005)

2004 Avg. Length of Stay	Jan	Feb	Mar	Apr	May	Jun	Jul	Aug	Sep	Oct	Nov	Dec	Total
<sup>1</sup> Released	14.04	10.58	21.86	14.71	15.42	18.24	27.41	19.52	22.55	21.81	23.15	20.81	<b>19.18</b>
<sup>2</sup> In Custody	52.35	57.73	49.20	59.05	62.03	64.15	62.37	67.37	60.14	55.37	43.85	44.29	<b>56.49</b>



2005 Avg. Length of Stay	Jan	Feb	Mar	Apr	May	Jun	Jul	Aug	Sep	Oct	Nov	Dec	Total
<sup>1</sup> Released	15.07	18.75	22.60	62.12	20.51	17.52	22.76	22.16	20.49	22.46	22.55	25.90	<b>24.41</b>
<sup>2</sup> In Custody	41.54	45.54	42.98	97.58	44.73	46.66	42.05	40.25	38.38	34.36	37.06	34.63	<b>45.48</b>



**Notes:** Less than one day of stay is calculated as one day.

<sup>1</sup> Length of stay is calculated according to release date for those who are released.

<sup>2</sup> For those still in custody, length of stay is calculated at the last day of the month.