

City and County of San Francisco



Juvenile Probation Department

Monthly Report for May 2004

Presented to the Juvenile Probation Commission

June 23rd, 2004

Table of Contents

Section I Summary Reports

Juvenile Hall, Log Cabin Ranch Summary Statistics.....	1
Community Programs Summary Statistics	2
Probation Services Summary Statistics.....	4

Section II Current Month General Detail

Probation Referrals, Juvenile Admissions And Average Daily Population	6
Juvenile Hall Admissions and Average Daily Population.....	7
Commitments to out-of-home placement.....	8
Commitments to California Youth Authority.....	9
Log Cabin Ranch Admissions and Average Daily Population.....	10
Probation Referrals	11
Juvenile Hall And Log Cabin Ranch Incident Report	12
Juvenile Hall And Log Cabin Ranch Grievances Report.....	13
Bay Area Resident Juvenile Hall Comparison	14
Juvenile Hall Admissions.....	15
Juvenile Hall Detainees by Detention Reason.....	16
Juvenile Hall Average Daily Population by Rated Capacity.....	17
Juvenile Hall Average Length of Stay.....	18

Section III Demographics

Juvenile Hall Detainees by Sex and Race/Ethnic Origin.....	19
Juvenile Hall Detainees by Age	20
Juvenile Hall Detainees by Age and Sex.....	21
Juvenile Hall Detainees by Geographic Residence of Youth.....	22
Juvenile Hall Detainees by Race/Ethnic Origin and Sex.....	23

Section IV

Historical Information

2001-2003 Probation Referrals	24
2002-2003 Juvenile Hall Admissions	25
2002-2003 Juvenile Hall Average Daily Population.....	26
2002-2003 Juvenile Hall Average Length of Stay by Month.....	27



Section I

Summary Reports

Summary Report for the Month of May 2004

Juvenile Hall	<i>April 2003</i>	<i>April 2004</i>	<i>May 2003</i>	<i>May 2004</i>	<i>YTD 2003</i>	<i>YTD 2004</i>
Admissions	191	145	192	178	861	884
Average Daily Population	89.75	96.5	94	101	90	100
Average Length of Stay (Releases)	14.65	14.71	16.86	15.42	17	15.32
Average Length of Stay (In Custody)	43.78	59.05	43.80	62.03	47	56.07
Releases	188	150	199	176	862	865
Log Cabin Ranch						
Admissions:						
First Time Commitments	0	2	2	2	10	10
Recommitments	1	0	0	0	1	0
<i>Total</i>	1	2	2	2	11	10
Releases:						
Graduated	4	4	2	1	13	12
Escape	0	0	0	0	0	0
Other releases	0	0	1	0	7	1
<i>Total</i>	4	4	3	1	20	13
Average Daily Population	27	18	25	15	26	18.20
Grievances Filed						
Juvenile Hall:						
B1	2	2	0	0	3	3
B2	0	0	0	0	0	8
B3	4	0	0	0	0	1
B4	3	0	3	0	13	1
B5	0	0	0	0	5	2
G2 (CO-ED)	0	0	1	0	3	2
<i>Total</i>	9	2	4	0	24	17
Log Cabin Ranch	0	0	0	0	0	0
Incident Reports						
Juvenile Hall	8	20	14	16	66	69
Log Cabin Ranch	2	1	3	1	6	2
<i>Total</i>	10	21	17	17	72	71

Summary Report for the Month of May 2004

Community Programs	<i>Program Vacancies by Agency on May 2004</i>	<i>Active in program April 2003</i>	<i>Active in Program April 2004</i>	<i>Active in Program May 2003</i>	<i>Active in Program May 2004</i>
IHBS Monthly Client Count					
BayView Hunters Point Foundation	13	16	13	16	13
Chinatown Youth Center	0	10	13	10	13
Morrisania West, Inc.	0	11	12	11	12
Office of Samoan Affairs	2	9	9	9	9
Potrero Hill Neighborhood House	4	11	7	11	7
Instituto Familiar de La Raza	10	22	22	22	22
Vietnamese Youth Development Center	4	5	7	5	7
Brothers Against Guns	3	0	11	0	11
<i>Total</i>	36	84	94	84	94
<i>May 2004 Percent Program Utilization</i>	73%				
<i>May 2004 Percent Change from last report</i>	0%				

Summary Report for TANF and Girls Programs
Month: April 2004

PROGRAM	ANNUAL GOAL	NUMBER SERVED
California Community Dispute Services: Youth Accountability Boards	40	52
CARECEN: Tattoo Removal and Case Management	45	37
Center for Young Women's Development: Girls Services	40	170
Community Works – Girls Diversion Program	24	14
Community Works – Girls Therapeutic Arts Curriculum in Juvenile Hall	100	82
Community Works – ROOTS Support for Children of Incarcerated Parents	40	44
Edgewood Kinship Support Network	30	23
Family Restoration House: Life Skills	30	32
Girls 2000: Girls Services and Family Support Services	20	22
Instituto Familiar de la Raza – Case Management	10	8
Mission Neighborhood Center: Young Queens on the Rise – Girls Services	35	27
Performing Arts Workshop: Arts Education at Impact High School	30	34
SAGE: Girls Services	35	38
Samoan Community Development Center: Anger Management	75	142
Special Services for Groups – Occupational Therapy Training Program	50	72
United Way/Girls Justice Initiative: Detention-based Case Management & Inside Mentoring Program	300 72	187 90
Urban Services YMCA: Bayview Beacon Truancy Support	50	16
YGCIC GED & Focus Vocational Programs	105	43
YWCA – CITS and FITS Girls Mentorship	64	65

Summary Report for the Month of May 2004

Probation Services	<i>March 2004</i>	<i>April 2004</i>	<i>Year To Date 2004</i>
Probation Referrals	197	245	1322
Petitions	74	73	455
Selected Court Dispositions:			
California Youth Authority	0	0	3
Log Cabin Ranch	2	3	8
Out of Home Placement	17	15	81
Other Probation	39	27	144
Violation of Probation Petitions Filed	16	20	73
California Youth Authority Monthly Count			
Institutions:			
Males	44	43	
Females	5	5	
Total	49	48	
Parole:			
Males	23	23	
Females	1	1	
Total	24	24	

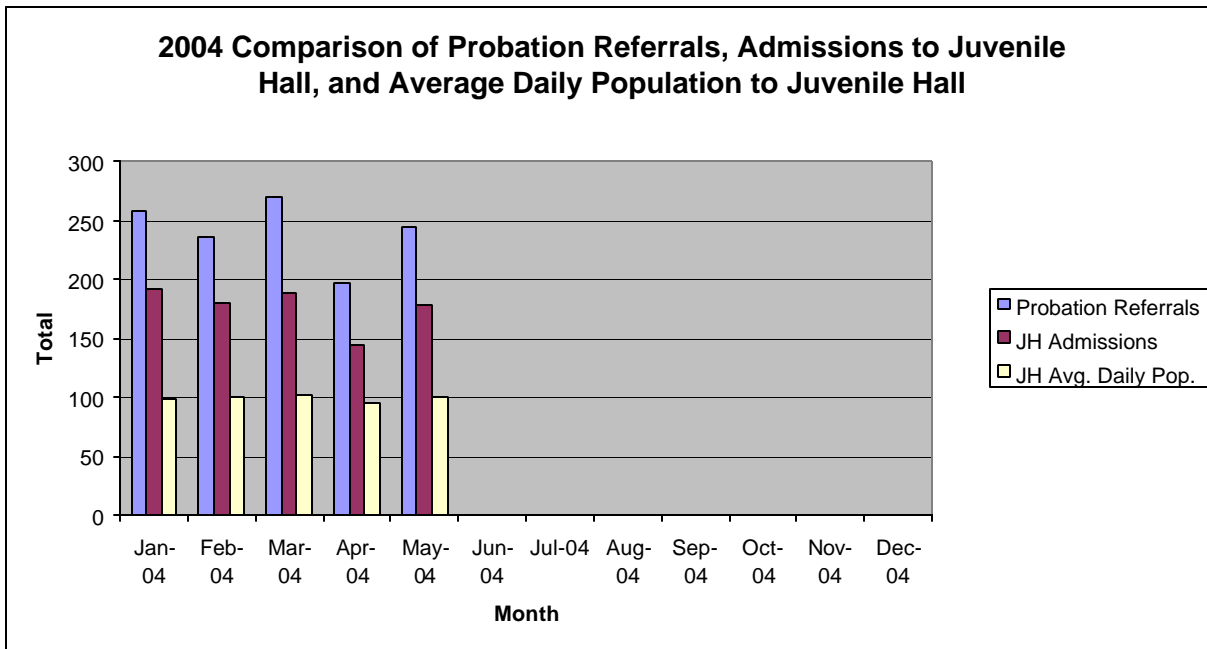
Summary Report for the Month of May 2004

Probation Services			
Caseload List	April 2004	May 2004	May Average # Youth by PO
South Intake	220	229	45
North Intake	160	218	36
Prevention Diversion	182	179	19
Serious Offenders	108	107	17
Supervision	169	174	21
County Placement	18	19	19
Private Placement	189	184	16
Drug Court	23	24	24
Family Integrated Treatment Services	127	128	16
<i>Total</i>	1196	1262	23
Special Services Unit	New	Closed	Active at end of Month
Record Sealings	5	7	139
Stepparent Adoptions	0	0	52
Terminations	1	0	12
Marriage Consents	0	0	0
Custody Evaluations	0	0	0
	Entered	Completed	Active at end of Month
Community Service	18	15	1175
Street Law (next session May 2004)	0	0	0
		Referred	Completed at end of Month
COPS		6	5
Street Law		10	8
Theft Awareness (next class in June)		0	0
Anger Management (still in session)		23	0
Life Management Skills		2	2
Kids Turn Non-Violent Family Skills (next class in June)		0	0
Information, Record Checks, Research & Photo Copying Juvenile Records For:	March 2004	May 2004	Year to Date 2004
Job Corps, Probation Departments,			
Military, Law Enforcement,			
Misc., (letters, Memos, Forms, etc.)	154	99	642

Section II
Current Month
General Detail

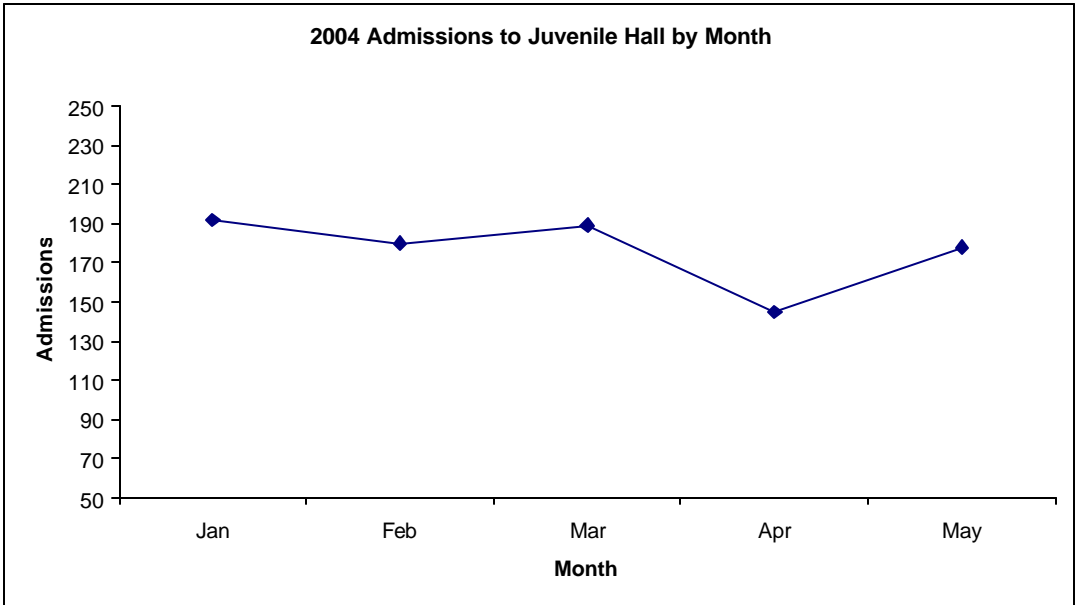
San Francisco Juvenile Probation

	Jan-04	Feb-04	Mar-04	Apr-04	May-04	Jun-04	Jul-04	Aug-04	Sep-04	Oct-04	Nov-04	Dec-04
Probation Referrals	259	236	270	197	245							
JH Admissions	192	180	189	145	178							
JH Avg. Daily Pop.	98	101	103	96	101							

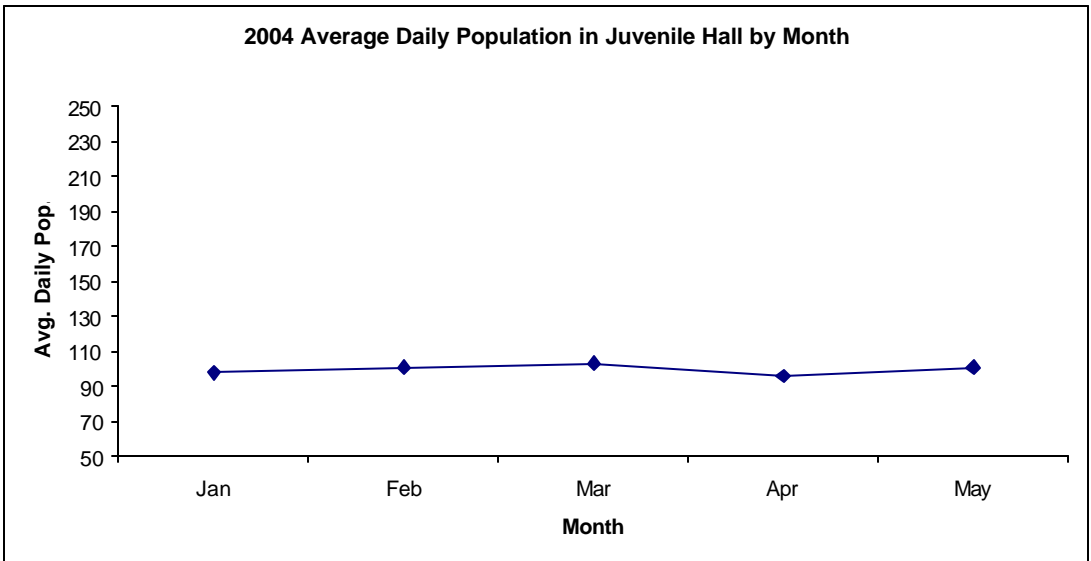


**San Francisco Juvenile Probation
Admissions and Average Daily Population
In Juvenile Hall
(Calendar Year 2004)**

Admissions	Jan	Feb	Mar	Apr	May	Jun	Jul	Aug	Sep	Oct	Nov	Dec	Total
2004	192	180	189	145	178								884



Avg. Daily Pop.	Jan	Feb	Mar	Apr	May	Jun	Jul	Aug	Sep	Oct	Nov	Dec	Total
2004	98	101	103	96	101								100

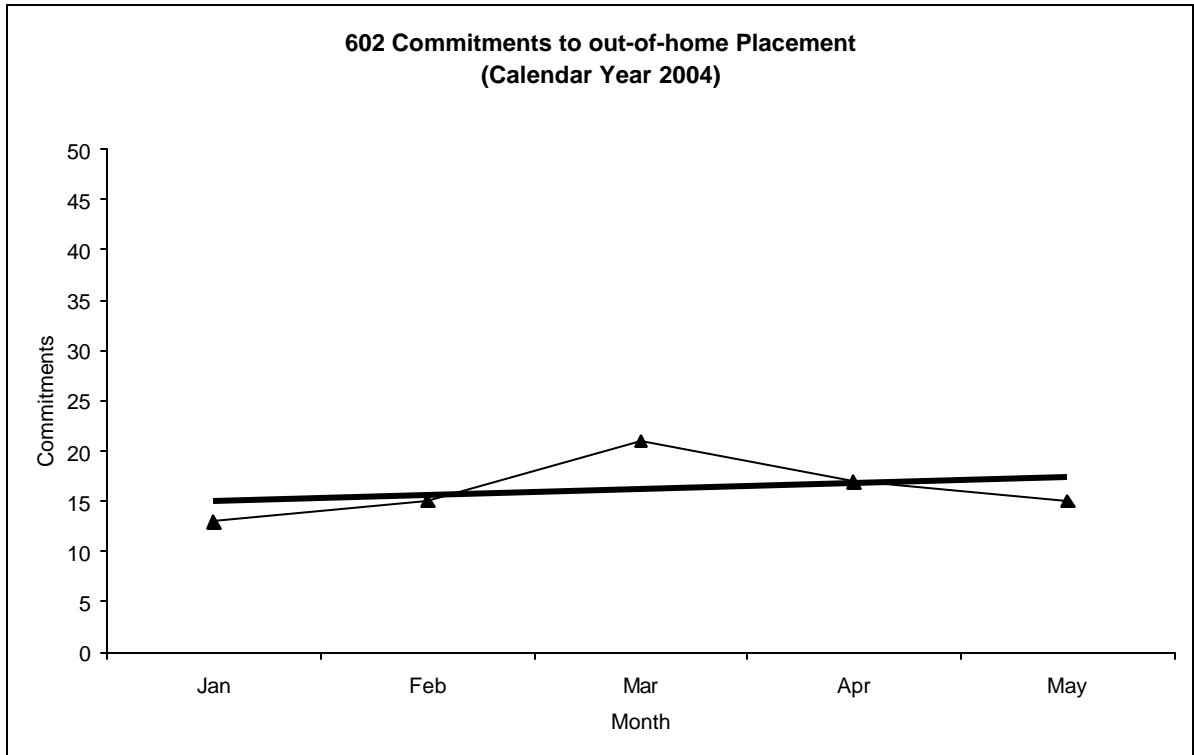


Out-of-Home Placement¹

Commitments of 602's

Calendar Year 2004

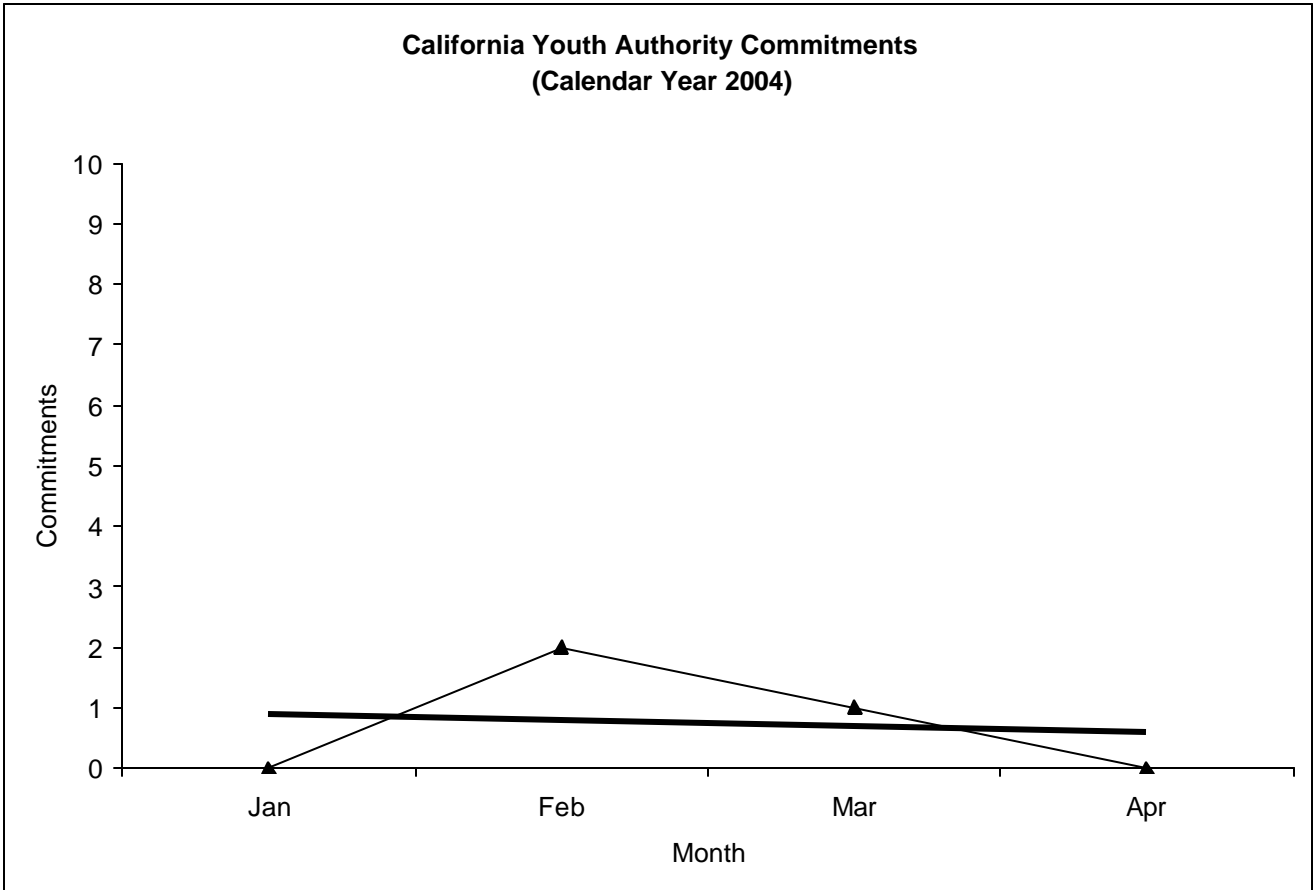
Commitments	Jan	Feb	Mar	Apr	May	Jun	Jul	Aug	Sep	Oct	Nov	Dec	Total
2004	13	15	21	17	15								81



¹ This report is based on 602 Commitments to out-of-home placements. If there is a 601 commitment, it will show as a footnote here. Figures are regularly updated to include reports from previous reporting periods.

California Youth Authority Commitments (Calendar Year 2004)

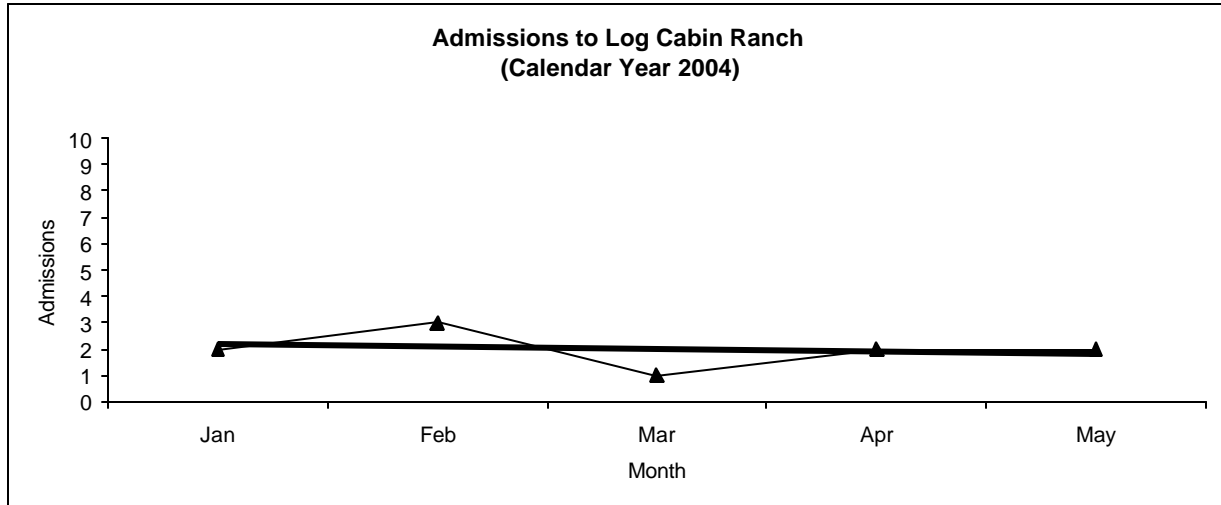
Commitments	Jan	Feb	Mar	Apr	May	Jun	Jul	Aug	Sep	Oct	Nov	Dec	Total
2004	0	2	1	0	0								3



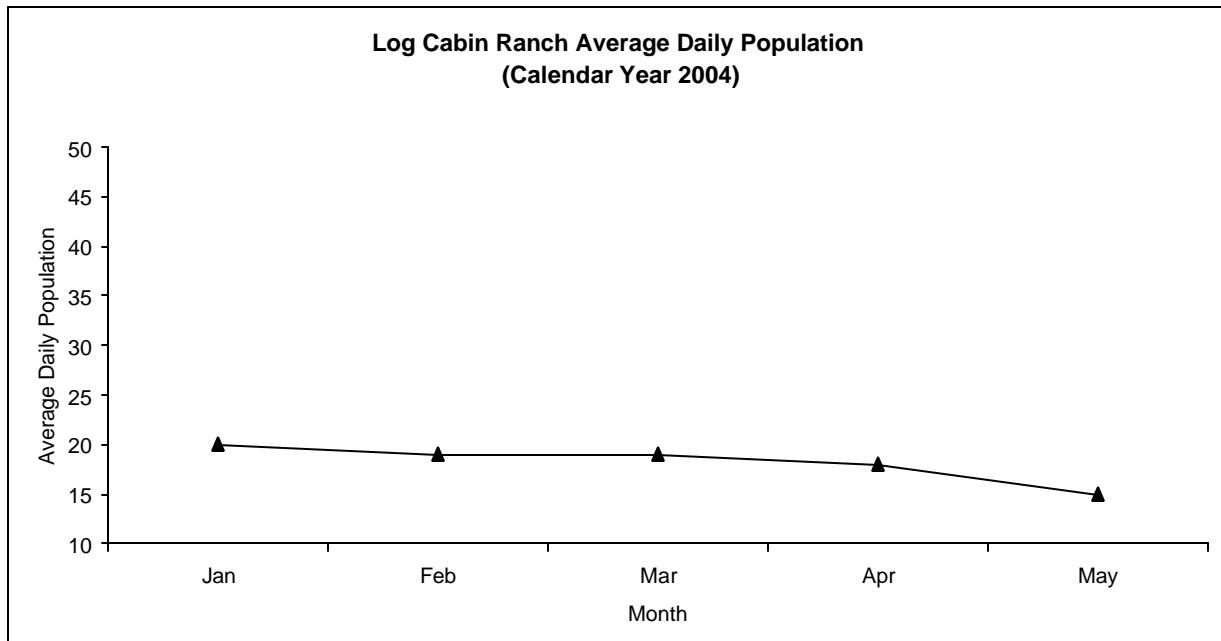
Log Cabin Ranch

Admissions and Average Daily Population (Calendar Year 2004)

Admissions	Jan	Feb	Mar	Apr	May	Jun	Jul	Aug	Sep	Oct	Nov	Dec	Total
2004	2	3	1	2	2								10



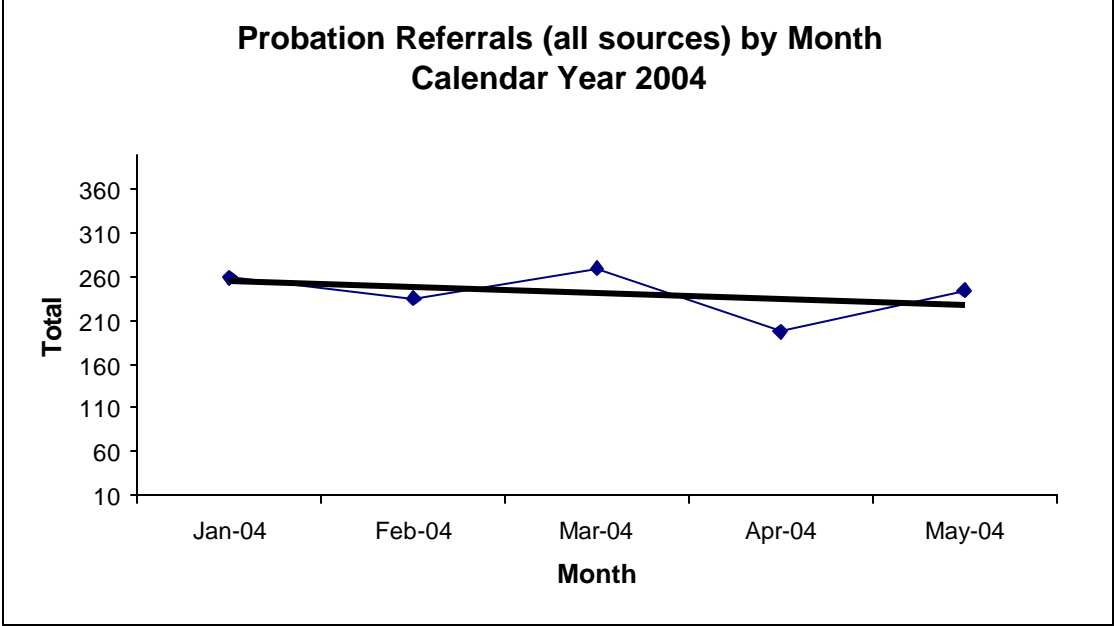
Avg. Daily Pop.	Jan	Feb	Mar	Apr	May	Jun	Jul	Aug	Sep	Oct	Nov	Dec	Total
2004	20	19	19	18	15								18.20



Probation Referrals by Month Calendar Year 2004

Probation Referrals (all sources) by Month (602 W&I)

Jan-04	259
Feb-04	236
Mar-04	270
Apr-04	197
May-04	245
Jun-04	
Jul-04	
Aug-04	
Sep-04	
Oct-04	
Nov-04	
Dec-04	



SAN FRANCISCO JUVENILE PROBATION DEPARTMENT
 MONTHLY INCIDENT REPORT FORM
 MONTH/YEAR: MAY 2004

Log Cabin Ranch	Battery on Staff	Injury to Staff due to Restraint of Minor	Fight	Battery Youth on Youth	Attempted Escape	AWOL	Attempted Suicide	Serious Contraband (Weapon Illegal Drug)
	0	1	0	0	0	0	0	0
	Battery on Staff with Injury	Fire	Fight with Injury	Battery Youth on Youth with Injury	Escape	Death	Suicide	Major Property Destruction
	0	0	0	0	0	0	0	0
Juvenile Hall	Battery on Staff	Injury to Staff due to Restraint of Minor	Fight	Battery Youth on Youth	Attempted Escape	AWOL	Attempted Suicide	Serious Contraband (Weapon Illegal Drug)
	1	0	9	2	0	0	0	0
	Battery on Staff with Injury	Fire	Fight with Injury	Battery Youth on Youth with Injury	Escape	Death	Suicide	Major Property Destruction
	0	0	1	2	0	0	0	1

Grievances Filed May 2004

San Francisco Juvenile Probation Department

Juvenile Hall

*During the month of May, there was zero (0) grievance submitted under **Juvenile Title 15 & 24 Minimum Standards for Juvenile Facilities Guidelines 2001 Revisions**. All documents would have been logged as grievances. In addition, all the grievances would have been referred to the appropriate departments and staff. The grievances would have been resolved via exchange of ideas between supervisory staff, residents, and the office of the Ombudsman.*

Grievance

None for the month.



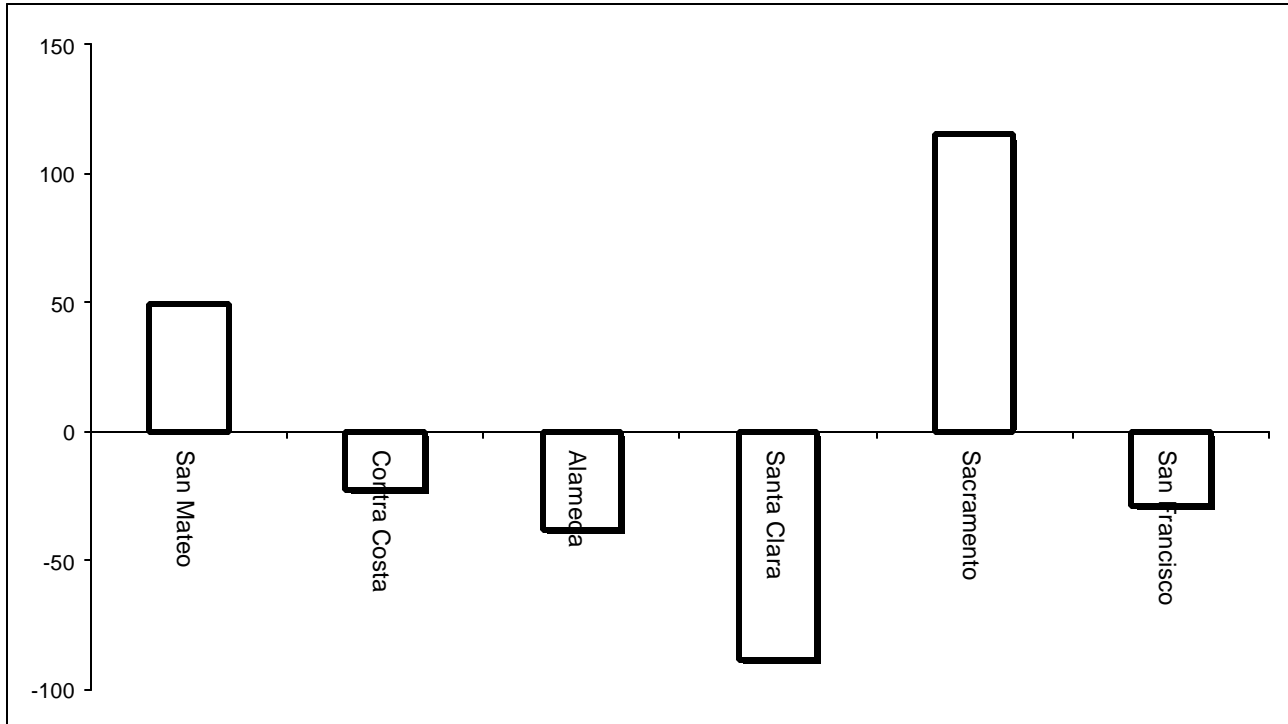
**Grievances Filed May 2004
San Francisco Probation Department
From the office of the Ombudsman.**

<i>Area of Infraction</i>	<i>Title 15 Article/Section</i>	<i>B1</i>	<i>Girls Unit</i>	<i>B2</i>	<i>B3</i>	<i>B4</i>	<i>B5</i>	<i>TOTAL</i>
Health Services	8.1433	<i>0</i>	<i>0</i>	<i>0</i>	<i>0</i>	<i>0</i>	<i>0</i>	<i>0</i>
Discipline Process	7.1391	<i>0</i>	<i>0</i>	<i>0</i>	<i>0</i>	<i>0</i>	<i>0</i>	<i>0</i>
Total		<i>0</i>	<i>0</i>	<i>0</i>	<i>0</i>	<i>0</i>	<i>0</i>	<i>0</i>

Log Cabin Ranch

Type	Log Cabin Ranch
Food/Snacks	0
Laundry	0
Personal Property	0
Phone Calls	0
Procedures	0
Head Call	0
Discipline	0
Complaints vs. Staff	0
Cottage Change	0
Medical	0
School	0
Probation	0
Miscellaneous	0
Total	0

Bay Area Resident Juvenile Hall Comparison Over/Under Capacity on June 9th, 2004

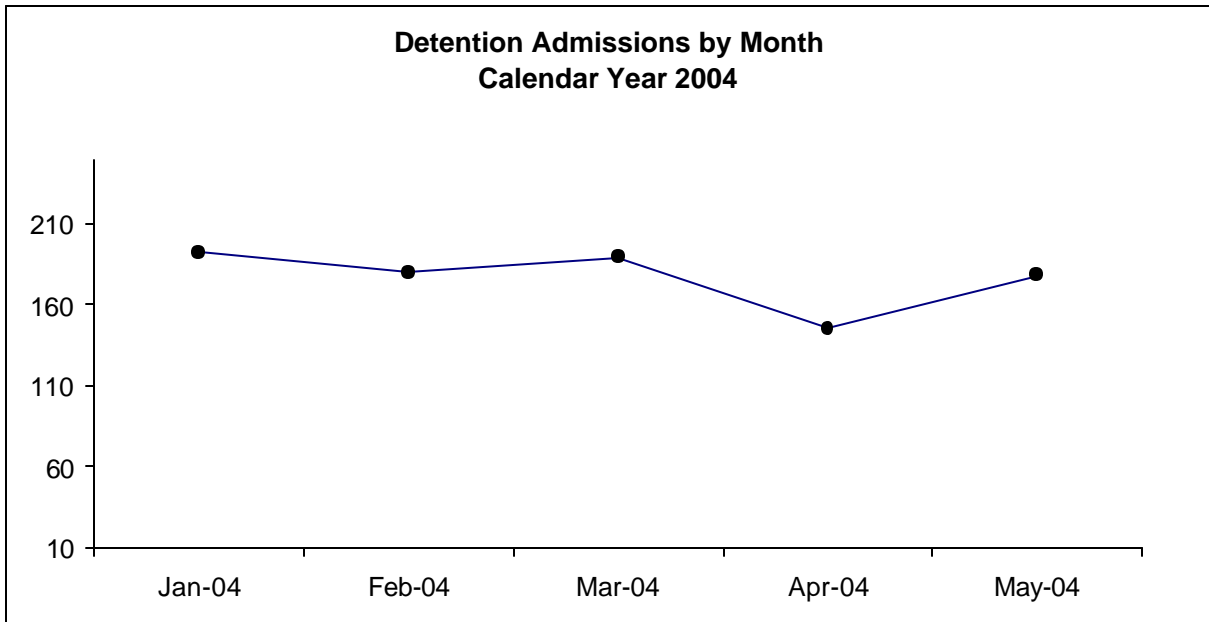


	Rated Capacity	Actual	Over/Under Capacity
San Mateo	130	179	49
Contra Costa	160	137	-23
Alameda	288	250	-38
Santa Clara	329	240	-89
Sacramento	256	371	115
San Francisco	132	103	-29

Juvenile Hall Admissions by Month Calendar Year 2004

Detention Admissions by Month

Jan-04	192
Feb-04	180
Mar-04	189
Apr-04	145
May-04	178
Jun-04	
Jul-04	
Aug-04	
Sep-04	
Oct-04	
Nov-04	
Dec-04	

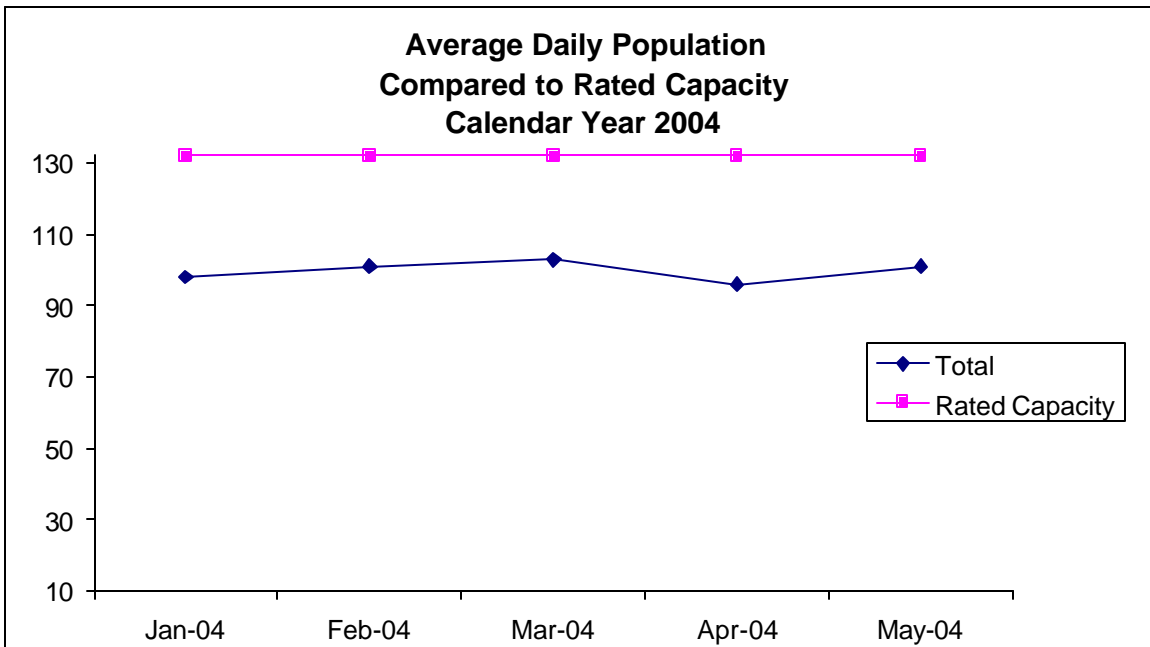


**Characteristics of Juvenile Hall Detainees on May 31st, 2004
Using CJIS Code From the Department of Justice**

Detention Reason	Offense Code	Attempted	MFI	Count	%
ASSAULT W/DEADLY WEAPON ON TRANSPORTATION PERSONNEL/ETC	245.2 PC		F	2	2.0%
ASSAULT:DEADLY WEAPON OR FORCE:POSSIBLE GREAT BODILY INJ	245 (A) PC		F	3	2.9%
ATTEMPTED MURDER	664 /187 (A) PC		F	8	7.8%
BATTERY W/SERIOUS BODILY INJURY	243 (D) PC		F	1	1.0%
BURGLARY	459 PC		F	3	2.9%
CARJACKING	215 PC		F	3	2.9%
FORCE OR ADW NOT FIREARM:GBI LIKELY	245 (A)(1) PC		F	8	7.8%
FORGERY	470 (A) PC		F	1	1.0%
GRAND THEFT FROM PERSON	487 (C) PC		F	1	1.0%
LEWD OR LASCIVIOUS ACTS W/CHILD UNDER 14 YEARS	288 (A) PC		F	1	1.0%
MURDER	187 (A) PC		F	4	3.9%
OBSTRUCT/RESIST EXECUTIVE OFFICER	69 PC		F	1	1.0%
ORAL COPULATION IN CONCERT W/FORCE/ETC	288 A (D)(1) PC		F	4	3.9%
PASS COMPLETED CHECK/ETC:INTENT:DEFRAUD	475 (C) PC		F	1	1.0%
POSSESS CONTROLLED SUBSTANCE	11377 (A) HS		F	1	1.0%
POSSESS STOLEN VEHICLE/VESSEL/ETC	496 D (A) PC		F	1	1.0%
POSSESS/PURCHASE COCAINE BASE FOR SALE	11351.5 HS		F	2	2.0%
POSSESS/PURCHASE FOR SALE NARCOTIC/CONTROLLED SUBSTANCE	11351 HS		F	1	1.0%
RAPE BY FORCE/FEAR/ETC	261 (A)(2) PC	Y	F	1	1.0%
ROBBERY:FIRST DEGREE:CAB/ETC/INHABITED DWELLING	212.5(A) PC		F	1	1.0%
ROBBERY:SECOND DEGREE	212.5(C) PC		F	8	7.8%
ROBBERY:SECOND DEGREE	212.5(C) PC	Y	F	1	1.0%
SEXUAL PENETRATION WITH FORCE/ETC	289 (A)(1) PC		F	1	1.0%
TAKE VEHICLE W/O OWNER'S CONSENT/VEHICLE THEFT	10851 (A) VC		F	4	3.9%
THEFT OF PERSONAL PROPERTY	484 (A) PC		F	1	1.0%
BATTERY	242 PC		M	3	2.9%
CHANGE OF PLACEMENT/PLACEMENT FAILURE	737 WI		M	7	6.9%
FAIL TO OBEY ORDER OF JUVENILE COURT 602 WI	777 (A)(2) WI		M	4	3.9%
OBSTRUCT/RESIST/ETC PUBLIC/PEACE OFFICER/EMERGENCY MED TECH	148 (A)(1) PC		M	2	2.0%
PETTY THEFT	484 (A) PC		M	1	1.0%
VIOLATION(S) OF HOME SUPERVISION CONDITION	628.1 WI		M	3	2.9%
BENCH WARRANT	BENCH WARRANT XX		X	5	4.9%
COURT ORDER 602	CTORD 602 XX		X	5	4.9%
LCR MEDICAL	LCR MED XX		X	2	2.0%
WARRANT 602	WRNT602 XX		X	7	6.9%
			Total	102	100.0%

**Average Daily Population
By Rated Capacity
Calendar Year 2004**

	Total	Rated Capacity
Jan-04	98	132
Feb-04	101	132
Mar-04	103	132
Apr-04	96	132
May-04	101	132
Jun-04		132
Jul-04		132
Aug-04		132
Sep-04		132
Oct-04		132
Nov-04		132
Dec-04		132



Juvenile Hall Average Length of Stay

For the Month of May 2004

¹Released

Range of Days	<i>1-10 days</i>	<i>11-20 days</i>	<i>21-30 days</i>	<i>30 or more days</i>	Total
# of Youth Released	123	14	11	28	176
% of Population	71.30%	8.70%	3.80%	16.30%	100%
# of Days	374	198	289	1853	2714
% of Total Days	13.78%	7.30%	10.65%	68.28%	100%
Average Length of Stay	3.04	14.14	26.27	66.18	15.42

²In Custody

Range of Days	<i>1-10 days</i>	<i>11-20 days</i>	<i>21-30 days</i>	<i>30 or more days</i>	Total
# of Youth Detained	27	24	10	41	102
% of Population	38.60%	18.10%	12.60%	30.70%	100%
# of Days	167	357	257	5546	6327
% of Total Days	2.64%	5.64%	4.06%	87.66%	100%
Average Length of Stay	6.19	14.88	25.70	135.27	62.03

Notes: Less than one day of stay is calculated as one day.

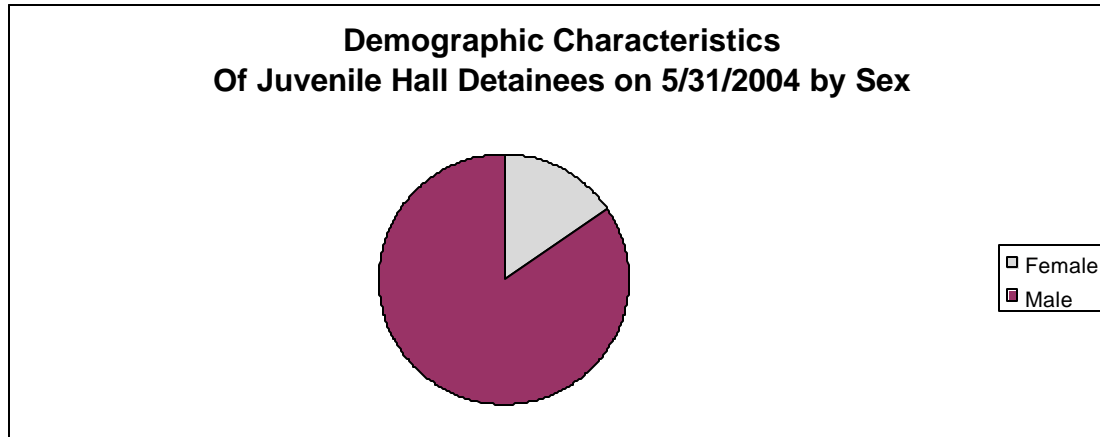
¹Length of stay is calculated according to release date for those who are released.

²For those still in custody, length of stay is calculated at the last day of the month.

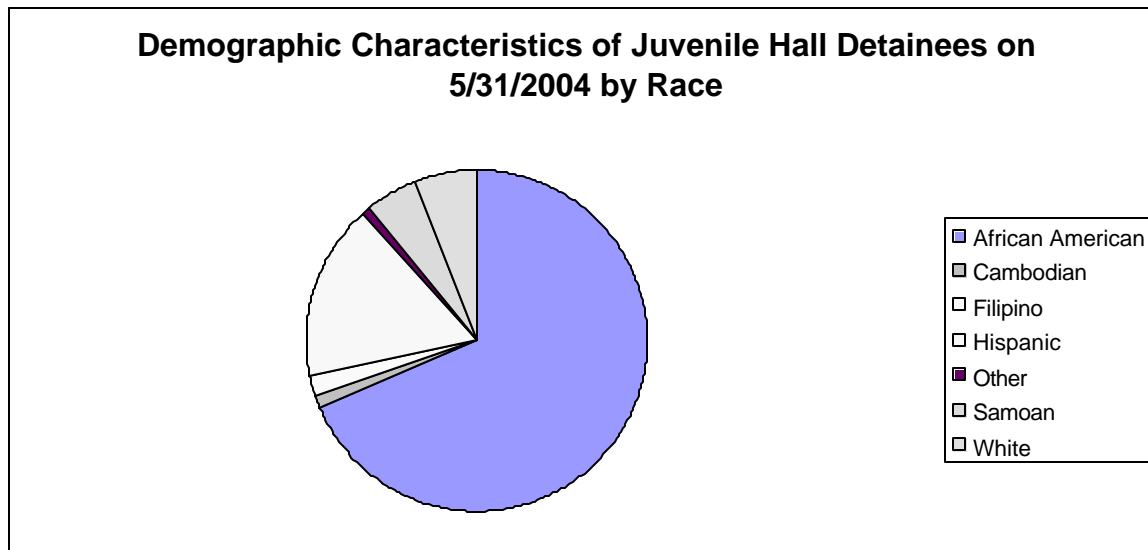
Section III

Demographics

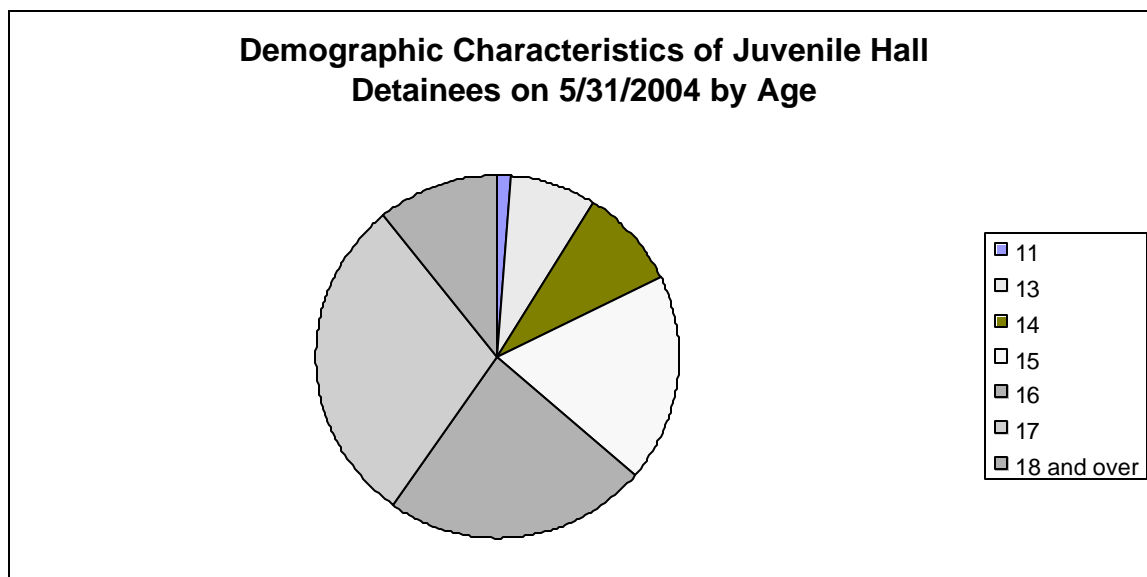
Sex	Frequency	Percent
Female	16	15.69%
Male	86	84.31%
Total	102	100.00%



Race/Ethnic Origin	Frequency	Percent
African American	70	68.63%
Cambodian	1	0.98%
Filipino	2	1.96%
Hispanic	17	16.67%
Other	1	0.98%
Samoan	5	4.90%
White	6	5.88%
Total	102	100.00%

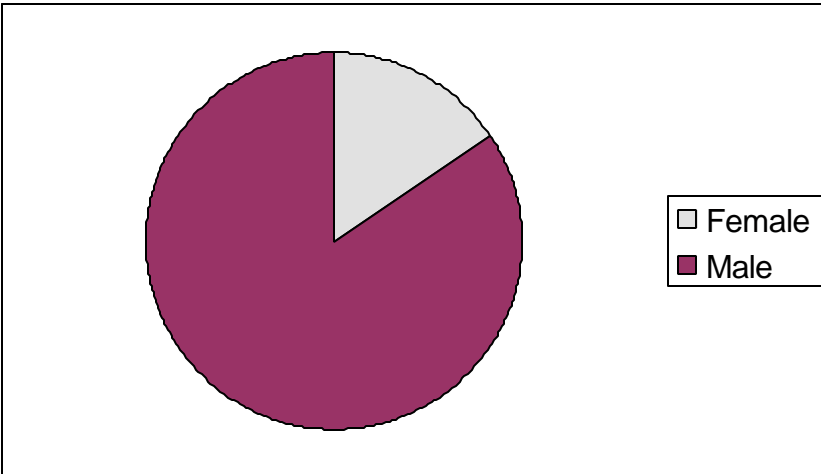


Age	Frequency	Percent
11	1	0.98%
13	8	7.84%
14	9	8.82%
15	19	18.63%
16	24	23.53%
17	30	29.41%
18 and over	11	10.78%
Total	102	100.00%



Demographic Characteristics of Juvenile Hall Detainees
on 5/31/2004
Age by Sex

Age	Female	Male	Total	
11	0	1	1	0.98%
13	2	6	8	7.84%
14	5	4	9	8.82%
15	2	17	19	18.63%
16	3	21	24	23.53%
17	4	26	30	29.41%
18 and over	0	11	11	10.78%
Total	16	86	102	100.00%
	15.69%	84.31%	100.00%	



Demographic Characteristics
Of Juvenile Hall Detainees on May 31st, 2004

Geographic Residence of Youth	Frequency	Percent
Richmond	2	2.0
North of Market/Downtown	1	1.0
Western Addition	8	7.8
South of Market/Tenderloin	2	2.0
Haight Ashbury/Castro	3	2.9
Inner Mission	11	10.8
Potrero	3	2.9
Parkside	1	1.0
Ingleside (West of Twin Peaks)	7	6.9
Outer Mission	22	21.6
Bayview	28	27.5
Non-San Francisco and Unavailable	14	13.7
	-----	-----
Total	102	100.0

Non-San Francisco and Unavailable	Frequency	Percent
BOONVILLE	1	7.1
DALY CITY	1	7.1
FRESNO	3	21.4
HAYWARD	1	7.1
LAKEPORT	1	7.1
OAKLAND	1	7.1
RANCHO CORDOBA	1	7.1
SAN ANDREAS	1	7.1
SAN JOSE	1	7.1
SAN LEANDRO	1	7.1
UNAVAILABLE	2	14.3
	-----	-----
Total	14	100.0

Demographic Characteristics
Of Juvenile Hall Detainees on May 31st, 2004

Race/Ethnic Origin by Sex

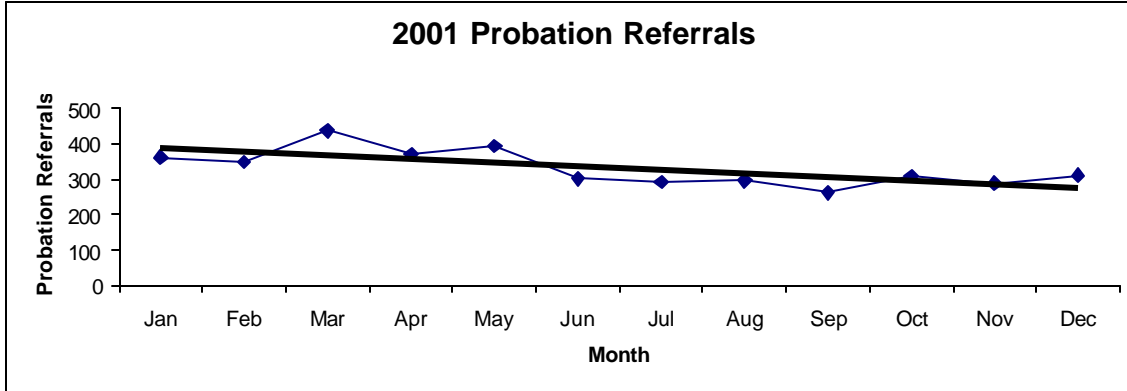
Count	SEX		Row Total
	Female	Male	
	F	M	
RACE			
AFRICAN AMERICAN	14	56	70 68.6
CAMBODIAN		1	1 1.0
FILIPINO		2	2 2.0
HISPANIC	1	16	17 16.7
OTHER		1	1 1.0
SAMOAN	1	4	5 4.9
WHITE		6	6 5.9
Column Total	16 15.7	86 84.3	102 100.0

Section IV

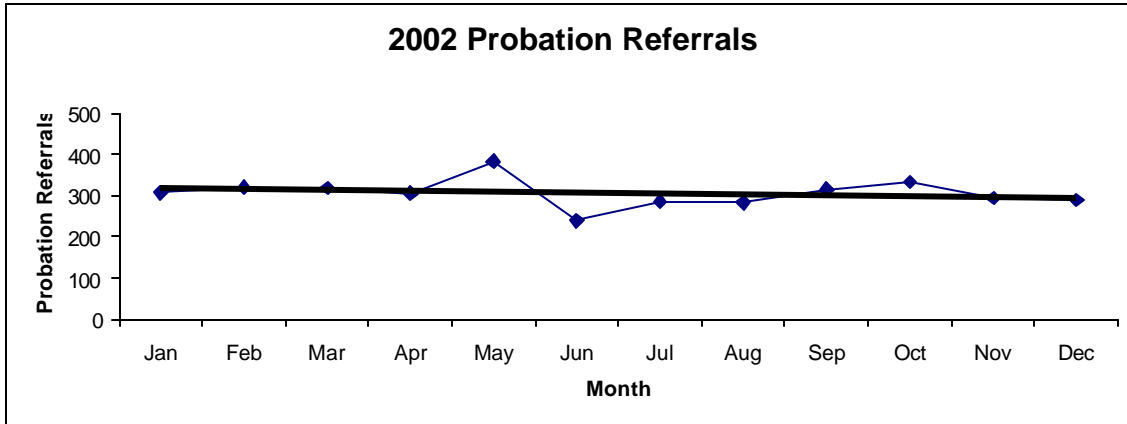
Historical Information

San Francisco Juvenile Probation
Probation Referrals (all sources) By Month
 (2001-2003)

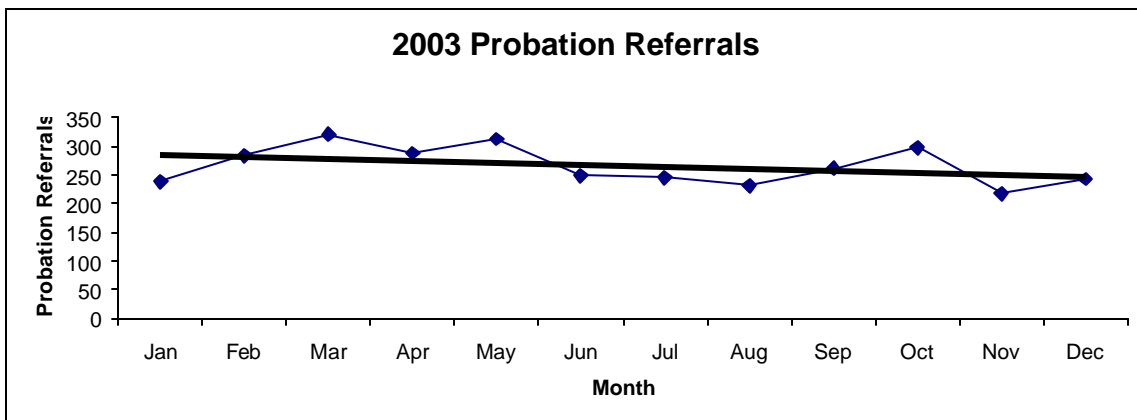
2001 Probation Referrals	Jan	Feb	Mar	Apr	May	Jun	Jul	Aug	Sep	Oct	Nov	Dec	Total
	361	348	437	370	394	301	292	296	262	309	287	311	3968



2002 Probation Referrals	Jan	Feb	Mar	Apr	May	Jun	Jul	Aug	Sep	Oct	Nov	Dec	Total
	308	320	318	305	384	240	286	283	315	333	294	289	3675

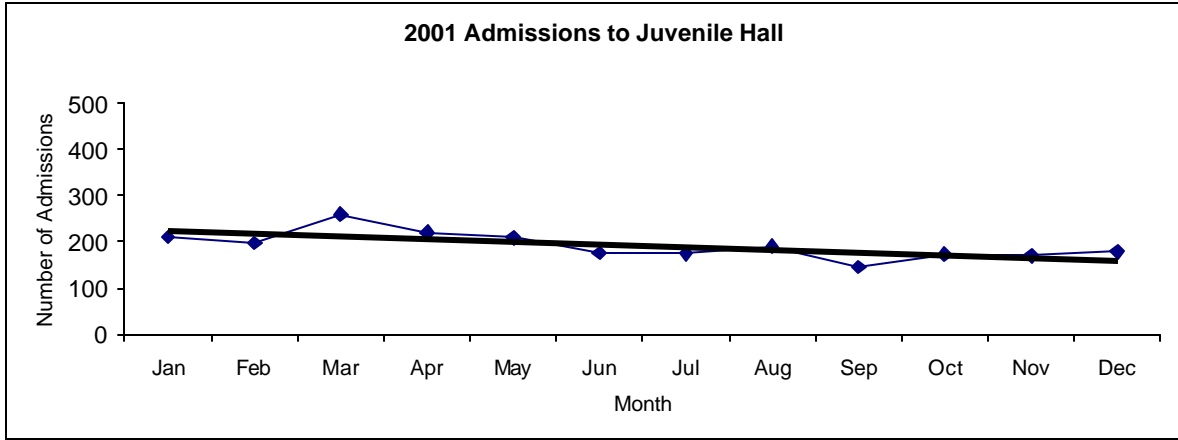


2003 Probation Referrals	Jan	Feb	Mar	Apr	May	Jun	Jul	Aug	Sep	Oct	Nov	Dec	Total
	238	283	320	288	313	248	245	231	261	297	218	243	3185

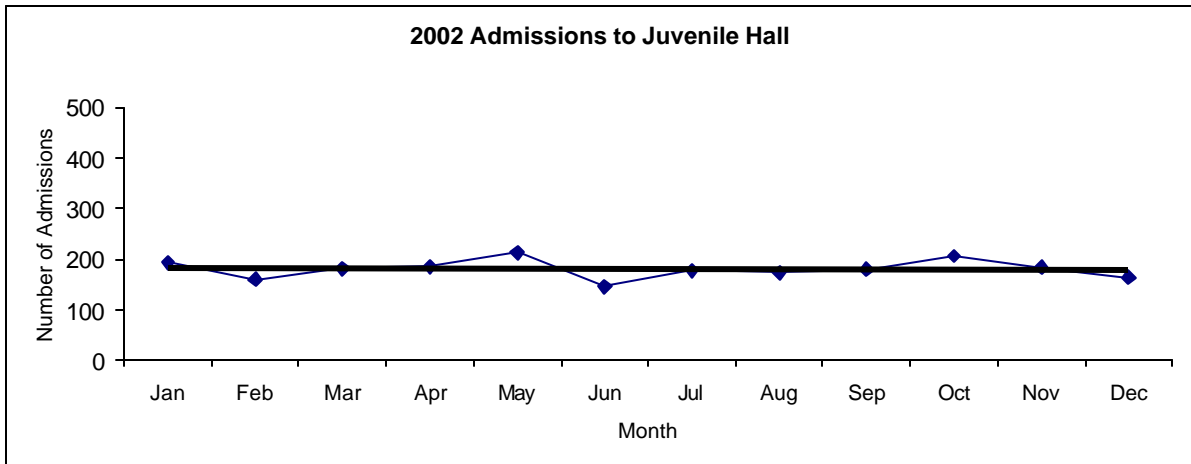


San Francisco Juvenile Probation
Juvenile Hall Admissions By Month
 (Calendar Years 2001-2003)

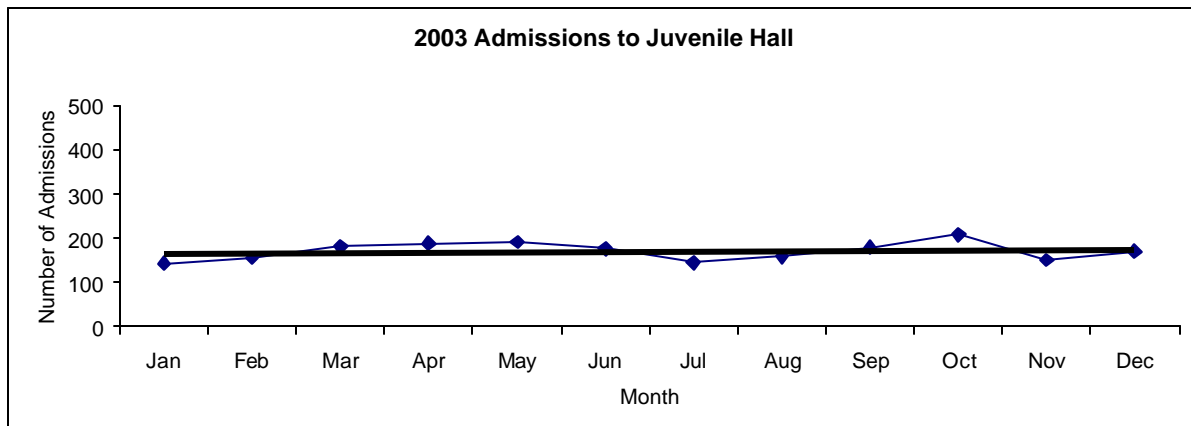
2001 Admissions	Jan	Feb	Mar	Apr	May	Jun	Jul	Aug	Sep	Oct	Nov	Dec	Total
	210	197	260	220	209	176	174	190	145	173	170	178	2302



2002 Admissions	Jan	Feb	Mar	Apr	May	Jun	Jul	Aug	Sep	Oct	Nov	Dec	Total
	193	160	181	185	213	145	177	173	179	206	183	164	2159

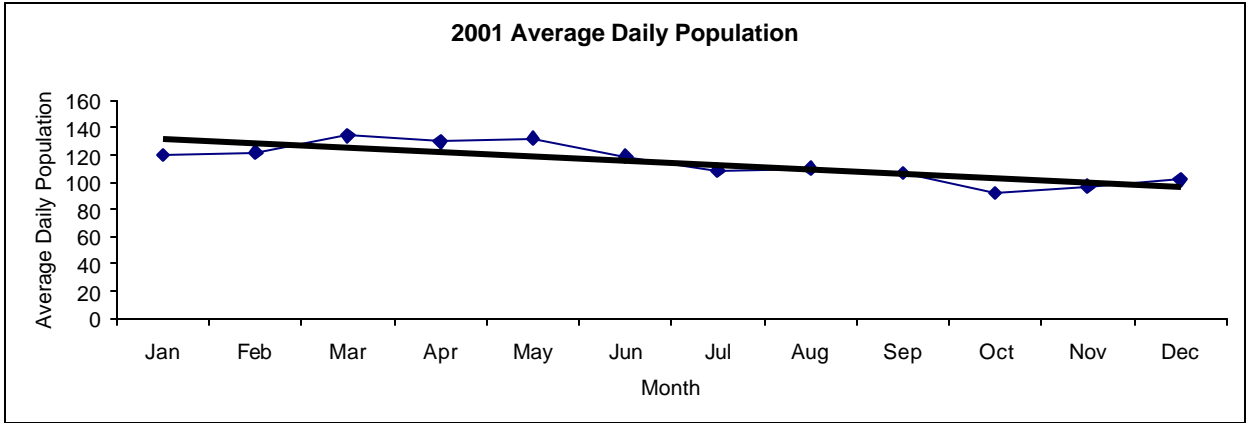


2003 Admissions	Jan	Feb	Mar	Apr	May	Jun	Jul	Aug	Sep	Oct	Nov	Dec	Total
	144	156	181	189	191	176	145	158	179	208	151	170	2048

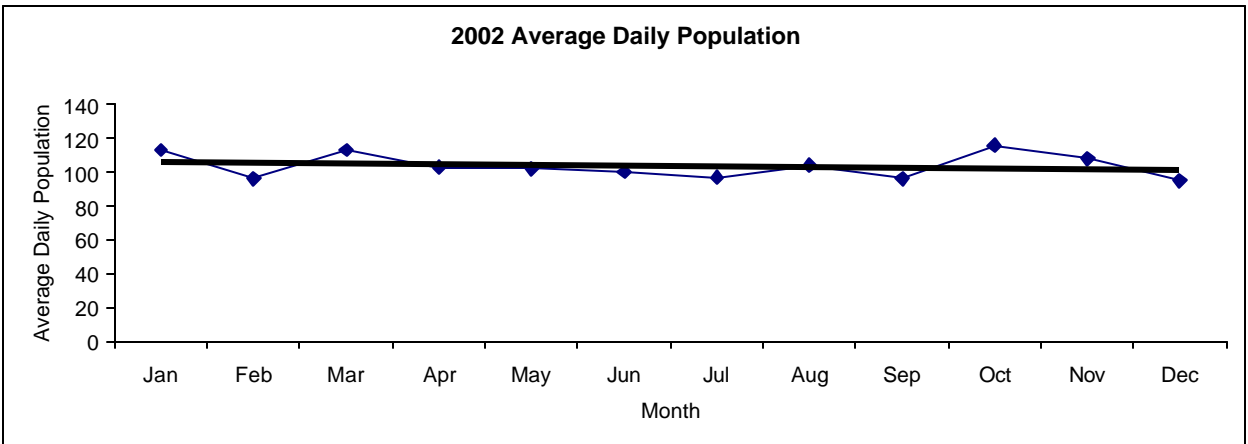


San Francisco Juvenile Probation
Juvenile Hall Average Daily Population By Month
 (Calendar Years 2001-2003)

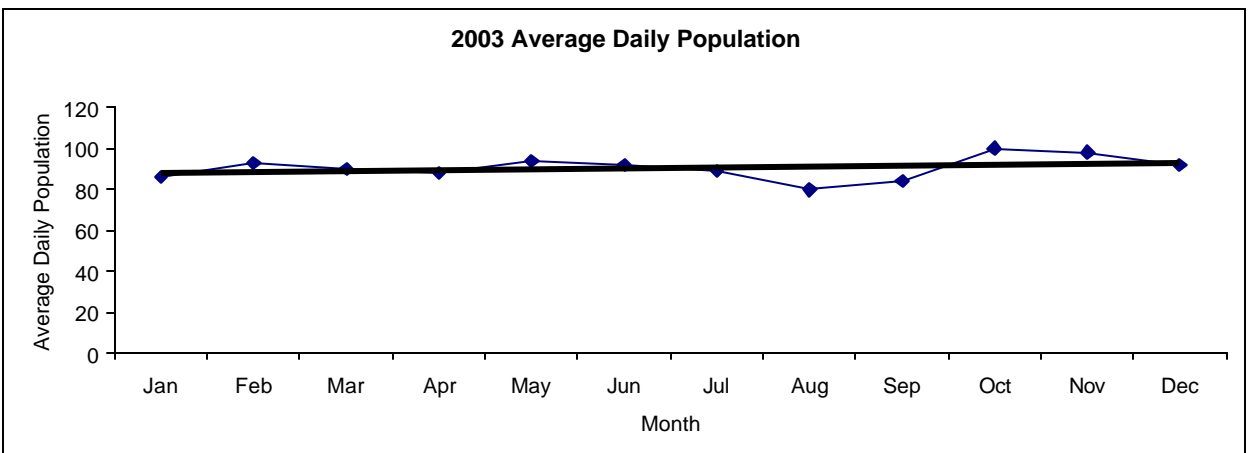
2001 Avg. Daily Pop.	Jan	Feb	Mar	Apr	May	Jun	Jul	Aug	Sep	Oct	Nov	Dec	Total
	120	122	134	130	132	119	109	110	107	92	97	102	115



2002 Avg. Daily Pop.	Jan	Feb	Mar	Apr	May	Jun	Jul	Aug	Sep	Oct	Nov	Dec	Total
	113	96	113	103	102	100	97	104	96	116	108	95	104

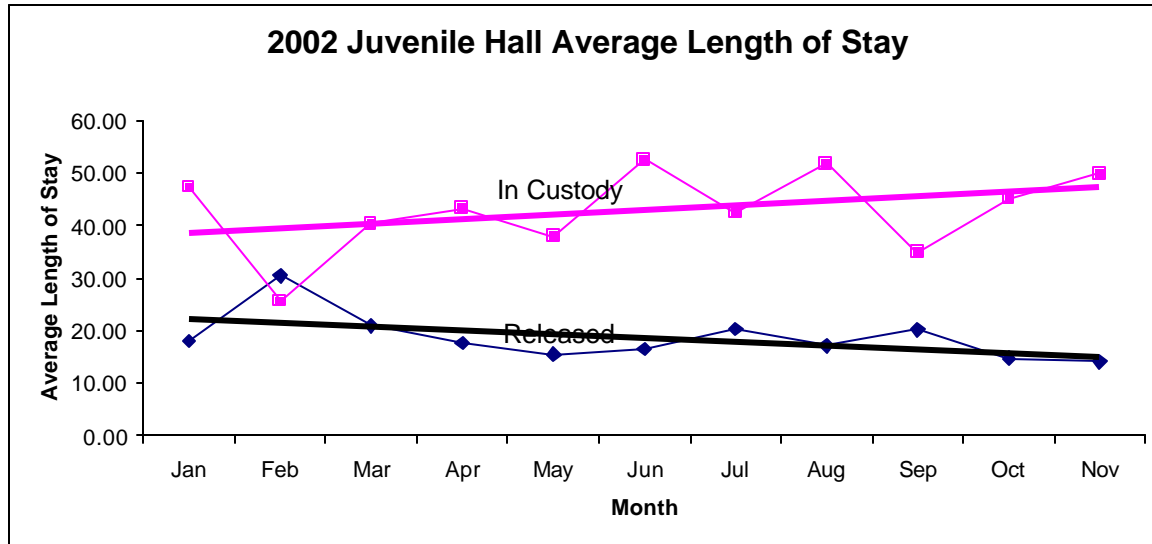


2003 Avg. Daily Pop.	Jan	Feb	Mar	Apr	May	Jun	Jul	Aug	Sep	Oct	Nov	Dec	Total
	86	93	90	88	94	92	89	80	84	100	98	92	91

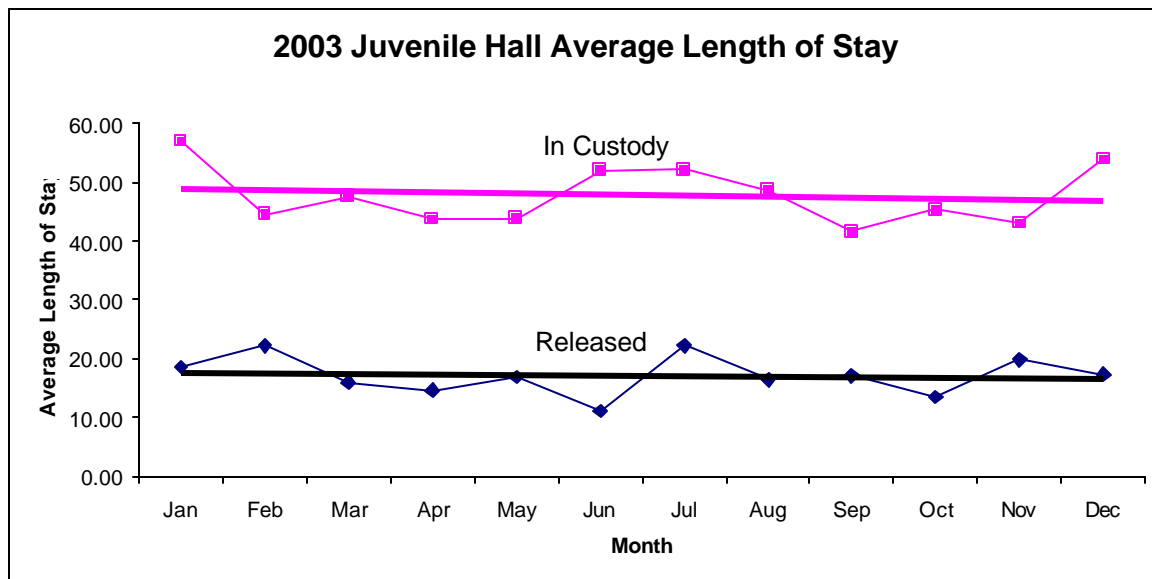


San Francisco Juvenile Probation
Juvenile Hall Average Length of Stay By Month
 (Calendar Years 2002-2003)

2002 Avg. Length of Stay	Jan	Feb	Mar	Apr	May	Jun	Jul	Aug	Sep	Oct	Nov	Dec	Total
¹ Released	18.05	30.44	20.88	17.65	15.50	16.45	20.22	17.15	20.16	14.67	14.03	18.30	18.63
² In Custody	47.30	25.63	40.35	43.29	37.86	52.57	42.41	51.77	34.82	45.11	49.85	58.85	44.15



2003 Avg. Length of Stay	Jan	Feb	Mar	Apr	May	Jun	Jul	Aug	Sep	Oct	Nov	Dec	Total
¹ Released	18.58	22.16	15.97	14.65	16.86	11.07	22.21	16.41	17.13	13.51	19.87	17.30	17.14
² In Custody	56.97	44.53	47.63	43.78	43.80	51.98	52.13	48.67	41.61	45.30	43.04	53.96	47.78



Notes: Less than one day of stay is calculated as one day.

¹ Length of stay is calculated according to release date for those who are released.

² For those still in custody, length of stay is calculated at the last day of the month.